

**KINGDOM OF CAMBODIA**  
**Nation Religion King**



**National Committee for Sub-National  
Democratic Development (NCDD)**



**MONDOL SEIMA DISTRICT DATA BOOK 2009**

**District Code Nr: 905**  
**Koh Kong Province**

**October 2009**



# **Mondol Seima District Data Book 2009**

District Code Nr: 905

**Koh Kong Province**



# Table of Contents

List of Abbreviations .....	i
Glossary.....	ii
Preface .....	vi
Introduction .....	vii
SECTION A: GEOGRAPHY .....	1
1 Administration and Infrastructure.....	3
2 Land Use and Natural Resources.....	5
3 Geography .....	7
3.1 Land Area .....	7
3.2 Distances between Offices .....	7
SECTION B: DISTRICT PROFILE .....	9
1 General Information .....	11
1.1 Population of the District.....	11
1.2 Occupations .....	12
1.3 Property .....	14
2 Infrastructure and Economy.....	16
2.1 Roads in meters over 3 years.....	16
2.2 Sewerage Pipes in meters over 3 years.....	16
2.3 Drainage and Bridges .....	16
2.4 Services in the District .....	16
2.5 Agriculture.....	17
3 Social Aspects .....	27
3.1 Education .....	27
3.2 Health.....	34
3.3 Water and Sanitation .....	36
3.4 Vulnerable groups.....	40
3.5 Migration .....	42
4 Natural Resources and Environment (NRE).....	43
4.1 Families involved with NRE issues over 3 years .....	43
4.2 Percentage of Families involved with Natural Resource issues, by Commune, for 2008 .....	44
4.3 Percentage Houses with access to Garbage collection and Families affected by environmental Pollution, by Commune, for 2008 .....	44
4.4 Percentage Families using chemical Fertilizer and chemical Pesticides, by Commune, for 2008 ..	44
5 Administration and Security .....	45

5.1	Birth Registration across 3 years.....	45
5.2	Number of unregistered Infants born in 2008, by Commune .....	45
5.3	Registered criminal Cases over 3 years .....	45
5.4	Registered criminal Cases per 10,000 people, by Commune, for 2008.....	45
5.5	Number of registered Land Disputes, by Commune, in 2008 .....	46
6	Gender .....	46
6.1	Registered Domestic Violence over 3 years.....	46
6.2	Percentage of registered cases of Families experiencing domestic Violence, by Commune, in 2008 .....	46
6.3	Women's involvement over 3 years.....	47
6.4	Percentage of Female Participants in Civil Society and of 18-60 year women with uncertain Jobs, by Commune, in 2008 .....	47
6.5	Female-headed Households over 3 years.....	47
6.6	Percentage female-headed Households and with Children of less than 5 years old, by Commune, in 2008 .....	48
7	Indigenous People in the District .....	48
7.1	Ethnic Minorities in the District over 3 years.....	48
7.2	Other Minorities in the District over 3 years.....	48
	SECTION C: PLANS AND PROJECTS .....	49
8	Priorities and Plans .....	51
8.1	Priorities of Commune Councils for 2009 in the District by Sector .....	51
8.2	Temporary Agreements by Commune, for 2009 .....	55
8.3	Outputs, estimated and actual costs of C/S Fund Projects between 2005 and 2008, by Commune .....	68
8.4	Total Expenditure on C/S Fund Projects by sector and commune between 2005 and 2008.....	69
8.5	Actual 2009 C/S Fund projects by Commune .....	69
9	District level Projects from 2006 to 2009 .....	70
9.1	District Initiative Infrastructure Projects from 2006 to 2009 .....	70
9.2	District Initiative Service Projects from 2006 to 2009 .....	71
9.3	Inter Commune Council Projects in 2008 and 2009 .....	72
9.4	Other Projects in 2008 and 2009 .....	74
	SECTION D: SERVICES AND ORGANIZATIONS .....	75
10	Infrastructure.....	77
10.1	Length of and Expenditure on Roads in 2008, by District .....	77
10.2	Scale of and Expenditure on Irrigation in 2008, by District.....	77
10.3	Power Supply in 2008, by District .....	78
11	Health Facilities.....	79

11.1 Health Facilities in the Province, by Operational District.....	79
11.2 Health Facilities and Staff in the province, by Operational District.....	80
11.3 Deliveries in 2007 in the Province, by Operational District.....	80
12 Education .....	81
12.1 Schools, Classes, Students, Staff, for for all levels, for 2007/2008 by District.....	81
12.2 Characteristics of Schools and School Principals for 2007/2008 by Commune .....	81
12.3 Enrolment by Level of Education, 2006/2007 by Commune .....	82
12.4 Enrolment by Level of Education, 2007/2008 by Commune .....	82
12.5 Aspects of Enrolment for 2007/2008 by Commune.....	82
12.6 School Buildings for all schools in the District for 2007/2008, by Commune .....	82
12.7 Conditions of Classrooms and Existence of Separate School Office and Library, by Commune	83
12.8 Community Participation and Financing across all schools in the District for 2007/2008 by Commune .....	83
12.9 Percentage Student Flow Rates and Graduation by level 2006/2007, by Commune .....	83
13 Staff and Resources at the District .....	84
13.1 District Councilors elected in 2009 .....	84
13.2 Committees of the Council.....	84
13.3 Board of Governors.....	84
13.4 Offices under Sala Krong, Sala Srok and Sala Khan .....	84
13.5 Municipality/District/Khan line offices.....	85
13.6 Properties and Equipment of District Administration .....	85
13.7 Registered Revenue of the District Administration in 2008 .....	86
13.8 Services in the District .....	87
13.9 Civil Society Organizations active in the District.....	87
13.10 Private Sector Organizations.....	88
SECTION E: POVERTY DATA .....	89
14 Data on Poverty .....	91
14.1 Predicted Poverty Rates for 2009, by commune .....	91
14.2 Poverty data from survey.....	91





## List of Abbreviations

#	Number
AGR	Agriculture
BR	Birth Registration
C. Pilot	Piloted Commune
C/S	Commune / Sangkat
CBO	Community-Based Organization
CDB	Commune Database
CDPD	Commune Development and Planning Database
CIP	Commune Investment plan
CLTS	Community Led-Total Sanitation
Comm.	Commune
Com Cov	Commune Covered
CPA	Complementary Package of Activities
CPS	Community Preschool
CCWC	Commune Committees for Women and Children
DANIDA	Danish International Development Agency
DDLG	Democratic Development and Local Governance Project (EC-UNDP)
DFID	Department For International Development (UK)
DIP	District Initiative Project
DIS	District Information System
District PDRD	District Office of Rural Development
District WP	District Work Plan
DIW	District Integration Workshop
DoLA	Department of Local Administration
Dr	Doctor
DWRM	District Office of Water Resource and Meterology
ECD	Early Childhood education (part of PE)
EMIS	Education Management Information System
Event IC	Celebration of International Days
FDH	Former District Hospital
GTZ	German Society for Technical Cooperation (Gesellschaft für Technische Zusammenarbeit GmbH)
Ha	Hectare
HC	Health Center
HC (NB)	Health Center (no building)
HH	Headed Household
HSI	Intervention for Health
HP	Health Post
HW	Hand Washing
ICC	Inter Commune Council
IFAD	International Fund for Agricultural Development
IND	Industry
Inter-commune	Inter-Commune Project Management Committee or Inter-commune project
IO	International Organization
LASED	Land Allocation for Socio-Economic Development
LGCR	Local Governance for Children's Rights
M&E	Monitoring and Evaluation
MA	Medical Assistant
MoEYS	Ministry of Education, Youth and Sports
MoH	Ministry of Health

MoP	Ministry of Planning
MPA	Minimum Package of Activities
MW1	Primary Midwives
MW2	Secondary Midwives
n/a	Not available
NCD	National Contracts Database
NCDD	National Committee for Sub-National Democratic Development
NGO	Non-Governmental Organization
NRML	Natural Resources Management and Livelihood
NU1	Primary Nurse
NU2	Secondary Nurse
OD	Operational District
ODF	Open Defecation Free
Ope. Costs	Operational Costs
Others	Other Staff
PBW	Public Works
PDoEYS	Provincial Department of Education, Youth and Sport
PDRD	Provincial Department of Rural Development
PDWRM	Provincial Department of Water Resource and Meteorology
PE	Parenting Education
PHAST	Participatory Hygiene and Sanitation Transformation
PHD	Provincial Health Department
PID	Project Information Database
PMC	Project Management Committee
Pop 04-05	Population Covered 2004 or 2005
PSDD	Project to Support Democratic Development through Decentralization and Deconcentration
RRD	Rural Road Development
RH	Referral Hospital
RILGP	Rural Investment and Local Governance Project
RPRP	Rural Poverty Reduction Program
RuLIP	Rural Livelihoods Improvement Program
SIDA	Swedish International Development Cooperation Agency
SPPA	Senior Provincial Program Advisor
TBA	Traditional Birth Attendant
UNDP	United Nations Development Project
UNICEF	United Nations Children's Fund
Vil	Village
Vil Cov	Village Covered
VIL-HC	Distance from Village to Health Center
WASH	Water, Sanitation and Hygiene
WRM	Water Resource and Meteorology

## Glossary

**C/S Fund:** The Commune/Sangkat Fund is established and managed by the Government of Cambodia to provide financial support for development projects and administrative costs of Commune/Sangkat Councils. The amount is determined as a percentage of the National Budget (for 2009: 2.8% over the 2008 budget) and is expected to increase gradually over the years. The total 2009 budget under this fund is \$ 27,643,902 (of which \$ 19,272,170 is for Development Projects and \$ 8,371,731 for Administration). Under the Rural Investment and Local Governance Project the World Bank currently reimburses the costs of development projects if these meet the Bank's criteria.

**CDB:** the Commune Data Base is a national database, compiled by the Ministry of Planning, on the basis of detailed questionnaires, completed at village and commune level, which are then sent to the Departments of Planning for data entry. The most recent round of data collection took place at the end of 2008 (and is reflected in the District Data Books). Commune, District and Provincial Profiles can be generated from this database and should be available from provincial Departments of Planning.

**CDPD:** the Commune Development and Planning Database is a database maintained by Departments of Planning and Ministry of Planning, recording proposed activities as determined and prioritized by Commune and Sangkat Councils; the Temporary Agreements between these councils and supporting agencies, as decided at District Integration Workshops and details on projects that actually take place at commune, district and provincial levels.

**CIP:** The Commune Investment Plan is a rolling three-year plan, developed and decided by the Commune or Sangkat Council. It sets priorities and identifies the projects proposed for the years to come.

**Commune and Sangkat (C/S):** the Communes (in rural areas) and Sangkats (in urban areas) are the lowest and smallest units of local government. Councils are elected directly, once in five years, for the 1417 Communes and 204 Sangkats. In the C/S there are 14,119 villages, which have Village Chiefs, but don't constitute a formal level of local government.

**DIP:** the District Initiative Project is jointly supported by the MDLF (Multi-Donor Livelihood Facility (supporting the NRM&L Program)) and PSDD. In 2009 it covers 106 districts, 60% of the total in the country, with a budget of \$ 3.2 million. It is focused on capacity development in planning, democratic development, public competitive procurement, financial management and service delivery.

**DIS:** The District Information System is a national database maintained by NCDD, recording resources, staff, revenue, infrastructure and equipment available in the 193 Districts and Khans throughout the country. The last update took place in July 2009.

**District, Municipality and Khan** constitutes the third level of Government in Cambodia. There are 159 rural Districts, 26 Municipalities and 8 Khans of Phnom Penh Capital. They all have Councils which were, for the first time, elected in May 2009, by the Commune/Sangkat Councilors. These councils have a mandate for 5 years.

**DIW:** District Integration Workshops are held between July and October, to bring Commune/Sangkat Councils, looking for support for their projects, together with the governmental and non-governmental agencies that may provide support.

**ICC:** Inter Communes Council projects are executed in 10 provinces under the Democratic and Decentralized Local Governance Project (DDLG). This five year project (2006-2010) is executed by Ministry of Interior and funded by the European Commission and UNDP. The project focuses on improving dialogue partnership and accountability; create a network of Commune Councils at the provincial and national level and support and contribute to local area development for poverty reduction. The work under the ICC component supports investments and services formulated through inter-commune dialogue and planning.

**MEDiCAM:** A non-profit and non-partisan membership organization for NGOs active in Cambodia's health sector. It is the primary networking agency for health-related NGOs.

**NCDD:** the National Committee for sub-National Democratic Development is the inter-ministerial body charged with the implementation of the Organic Law (a key legislative document, adopted in 2008, outlining the envisaged decentralization). NCDD also channels substantial financial assistance by a number of Development Partners, to projects and programs at various levels. This amounted to over \$ 91 million in 2008. More information at: [www.ncdd.gov.kh](http://www.ncdd.gov.kh). This website also provides access to reports, manuals, legal documents, details on projects and more.

**OD:** the Operational Districts are the districts as defined and used by the Ministry of Health. These do not coincide with the 193 (Administrative) Districts and Khans, as used by all other RGC agencies. The Operational Districts are usually larger, and so there are 77 Operational Districts against 193 administrative Districts and Khans. However they do fit within the boundaries of administrative provinces.

**PID:** The Project Information Database is the database maintained by NCDD at national and sub national level, to follow all aspects of projects by Commune and Sangkat Councils, including the C/S Fund projects

### **Provincial Investment Fund (PIF)**

The Provincial Investment Fund is allocated to all Provinces and Municipalities according to a population based formula. Part of the fund is earmarked for support to planning activities of the Provincial / Municipal Department of Planning; and to gender mainstreaming activities of the Provincial Department of Women's Affairs. The remaining "un-earmarked PIF" is allocated by PRDC to sectoral technical departments against established criteria and in response to proposals with prioritisation taking into account: priorities formulated by the CS Councils and aggregated by District into District Priority Activities Matrices (DPAM); alignment with national planning and poverty alleviation criteria, complementarity with other planned activities; and performance of the Department concerned in implementation of activities in previous years. With this provisional allocation, the Department then programs activities through the District Integration Process. Finally, the agreed activities, plus support costs amounting to no more than 25% of the total, are included in a sub-contract signed between PRDC and the Department, pursuant to the overall PSDD contract signed between NCDD and PRDC. Total budget has been around \$ 2 million per year.

**Province:** the 23 Provinces and Phnom Penh Capital City represent the 2<sup>nd</sup> layer of government. They vary in size, from very small, like Kep (approx. 36,000 people) and Pailin (approx. 70,000 people), or large but with small populations, like Mondulkiri (over 60,000 people), and Ratanakiri (over 153,000) to densely populated and large, like Kampong Cham (over 1.7 million people) and Kandal (approx. 1.4 Million people).

**PSDD:** the Project to Support Democratic Development through Decentralization and Deconcentration is funded by DFID (UK), SIDA (Sweden) and UNDP and runs from 2006 till the end of 2010 (including a one year extension). Annual budgets range from \$ 11 million to over \$ 18 million. The project provides core technical support to NCDD and to the provinces, financial support to the C/S Fund, District Initiative, Provincial Investment Fund and capacity building support through training, studies and advisory services.

**RILGP:** The Rural Investment and Local Governance Project is a World Bank funded project that provides substantial support to C/S Fund projects and to developing the required infrastructure, policies, systems and skills. It started in 2003 with a Loan for \$ 22 million for 2003-2007 and was then extended with a Grant of \$ 36 million for the period of 2007-2010. Discussions about a possible RILGP 2 are taking place between RGC and the World Bank.

**RPRP:** the Rural Poverty Reduction Project is a seven year project from 2004 till 2010, funded by IFAD and UNDP and implemented through the Ministry of Agriculture, Forestry and Fishery, supported by the Ministry of Interior and facilitated by NCDD. The project is active in the provinces Prey Veng and Svay Rieng and focuses on 120,600 households below poverty line. The objective is poverty reduction with the active participation of the poor through improved livelihoods, Strengthened capacity, Sustainable farming systems and natural resource management, new and/or rehabilitated infrastructure development, increase accessibly to technology, services and markets for their economic and social development.

**RULIP:** the Rural Livelihoods Improvement Project is implemented by the Ministry of Agriculture Forestry and Fisheries (MAFF)' Project Support Unit- PSU, with the NCDD playing the role of cooperating agency. Funded by IFAD and UNDP, the project will run till 2014. The target group consists of poor households who have little or even no land, few livestock or other assets and often many dependents. The main goal of the project is to directly or indirectly improve the livelihood systems, food security and incomes of a total of 33,900 rural poor, ethnic minority and female headed households in targeted village of Kratie, Preah Vihear and Ratanakiri provinces in a sustainable manner.

**Seth Koma:** The UNICEF funded Seth Koma program focuses on measurable action for children and women. During 2006 -2010 it is implemented in six provinces. Government and UNICEF pursue a set of inter-related goals, addressing critical stages of the life cycle of the child: a) Mothers have safe pregnancies and deliveries and healthy newborns; b) best possible start in life of infant; c) Children enter schools at the right age of six years; d) Children are protected from exploitation, abuse, violence, discrimination and other risks; and e) Youth and adolescents acquire life skills, express their views, participate in the decisions.

## **Preface**

The Government of Cambodia attaches great importance to optimal use of scarce resources and to participatory planning and management at all levels. The Organic Law which was adopted in 2008 provides the legal context for further steps towards improving and decentralizing planning, management and monitoring, and towards greater accountability and transparency of institutions at sub-national levels.

The Government has established elected Councils at the sub-national levels, and we will progressively give them the responsibilities, together with the human and financial resources, to deliver a wide range of public services. They will be more democratic, more efficient, more transparent and accountable, better at addressing gender and other inequalities, and at fighting corruption. We recognize that development does not come from government alone; it needs the involvement of citizens, civil society and the private sector, and the new system will facilitate this.

A central element in this process is the availability of information on any aspect of development to all concerned parties. The newly elected Councillors at District and Khan level, line departments operating at these levels, but also NGOs, Development Partners, Commune Councillors and citizens throughout Cambodia need information on problems and requirements, resources and opportunities, services and agencies, plans and projects. They will need such information to better understand the present situation, set targets for the future, monitor progress, know what others are doing and to apply resources wisely and this is the reason the District Data books will be so valuable.

The District Data Books are a major step towards full transparency and towards informed planning and decision-making. They provide all available data at District, Khan, Commune and Sangkat level in easily accessible formats, in Khmer and English, through over 16,000 printed copies, CD-ROMs and the NCDD website.

This is the first time in Cambodia (and possibly in South East Asia) that such detailed information is made so widely available and NCDD should be commended for the hard work that has gone into this. We also thank the Ministry of Planning, which provided the detailed data of the Commune Data Base, the sectoral ministries and provincial authorities who contributed data and the Development Partners who provided financial support.

It is our sincere hope that the publication of the District Data Books will strengthen capacities, especially at district levels, for evidence-based development planning. We also hope that this information will deepen the understanding among Ministries, Provincial Authorities, Development Partners, NGOs and research agencies of the realities at commune and district levels.

We call upon all to use and distribute this information, complement or correct where appropriate and to contribute new data in the years to come.

**Sar KHENG**

Deputy Prime Minister, Minister of Interior and Chairman of NCDD

# Introduction

## Purpose

The purpose of the District Data Books is to bring together information on any aspect of life and development of Districts, Khans, Communes and Sangkat, together and make this widely available. The primary targets are the newly elected District Councilors, district level line departments, provincial agencies, Development Partners and NGOs operating at this level. They need detailed knowledge on current living conditions, natural resources, infrastructure, agriculture and other economic activities, current service levels, past and planned projects and available resources.

While much information exists on many of the above aspects, it is often hard to access that information and much is lost to reports, databases and statistics that are not widely shared. Data are often only available in one language and often out-of-date, and many reports cover only one sector or region.

We found that these problems are especially acute at the district level. Now that Districts are becoming a much more significant level of local government and development planning, there is an urgent need for wide-ranging data to be used for setting base-lines, planning and prioritizing, monitoring and learning.

## Approach

We have attempted to identify and compile all available statistics, reports, maps and other data at district and/or commune level. From this we have selected information that is available for all or most districts, reasonably reliable and up-to-date, sufficiently detailed and of possible interest to development planners, decision makers, agencies and citizens.

The major sources of the information in these District Data Books are:

- a) The Commune Data Base information over the years 2006 to 2009 (the most recent data were collected late last 2008), as compiled by the Ministry of Planning
- b) Detailed information directly collected from the Ministry of Health, the Ministry of Education, Youth and Sports and (for maps) the Ministry of Land Management, Urban Planning and Construction
- c) The Project Information Database (PID) at NCDD (up-to-date)
- d) The Commune Development and Planning Database (CDPD) (up to date)
- e) The District Information System (DIS) (updated per Mid 2009)
- f) Direct data collection at provincial and district level on private sector, irrigation, roads, and electricity, through provincial agencies
- g) Medical data collected from MEDiCAM
- h) The ID Poor Project – for poverty data on a number of provinces and districts
- i) NCDD's work on predictive poverty rates
- j) Specific projects for outputs, plans and budgets (Seth Koma, RILGP, RPRP and ICC)

## Limitations of the data

We are fully aware that the data we collected are not always complete, consistent or correct. While we have rejected information that was wrong or very incomplete, we decided not to aim for statistical and scientific perfection, but to include information that is useful, relevant

and comprehensive. We also accepted different sources for the same data as this may encourage discussion on the quality of the respective data.

We strongly encourage anyone who notes errors or incompleteness in these data to contact us and to share their data. We hope that the next round of producing such District Data Books can draw on wider sources and more complete data.

We encourage the District Administrations, who receive these data also in digital format, not only to use these for their planning and monitoring, but also to start correcting and updating these data and to share new data with NCDD for future use.

## Contents

The information in the following pages is organized in five sections:

- a) **Geographical data:** this section provides maps on infrastructure and administration and on land use and natural resources management. These maps are also provided in large format to all Districts and Khans.
- b) **District Profile:** this presents wide ranging data, covering 2006 – 2009, at district and commune level, extracted from the Commune Data Base, but edited for better understanding.
- c) **Plans and Projects:** this section presents development priorities determined by Commune and Sangkat Councils, Temporary Agreements, outputs and expenditure of major projects at Commune and District level over 2006 – 2008 and plans and budgets for 2009.
- d) **Services and Organizations:** this section provides details on key infrastructure (roads, electricity, irrigation systems) and services in health and education at district and commune level. It also provides an inventory of resources at the District Administration, NGOs operating in the district and private sector agencies active in the district.
- e) **Poverty Data:** this section provides predicted poverty rates for 2009 for all districts and communes and detailed poverty data compiled and processed by the ID Poor project for those that have been covered by this project.

## The future

It is our hope that this is the start of a longer-term process. We hope that a next edition of these District Data Books will offer more comprehensive, correct and up-to-date information. We hope that the District Administrations will not only start using this information, but also improve and update it. For this they are all provided with the full data set in digital format.

We invite agencies, projects and experts to send reports, statistics and maps that could be used for a next version to us and we invite all users of the District Data Books to inform us about errors, updates and inconsistencies. Please contact us through [info@ncdd.gov.kh](mailto:info@ncdd.gov.kh)

We now invite you to browse through this data book. You may open this randomly or use the table of contents and go to the aspects that have your special interest.

We hope that you will be informed, surprised and assisted. We hope, above all, that this information will lead to a deeper understanding of causes and effects of poverty, to purposeful decisions on how to tackle those causes and to greater transparency in using scarce resources for the benefit of all.

Martin de Graaf  
Program Advisor, PSDD/NCD



## **SECTION A: GEOGRAPHY**



# **1 Administration and Infrastructure**

Please see separate folder containing A3 maps.



## **2 Land Use and Natural Resources**

Please see separate folder containing A3 maps



### 3 Geography

#### 3.1 Land Area

Total Land Area (ha)	Forest Land Area (ha)		Cultivation Land Area (ha)	Construction Land Area (ha)	Other Land Area (ha)
	Total	Flooded Forest Area			
135230	0	0	141	0	0

#### 3.2 Distances between Offices

Location	Distance (Km)
From District Office to C/S Office of Pak Khlang	0
From District Office to C/S Office of Peam Krasaob	0
From District Office to C/S Office of Tuol Kokir	0





## **SECTION B: DISTRICT PROFILE<sup>1</sup>**

---

<sup>1</sup> All data in this section come from the Commune Database (CDB) unless otherwise specified. These include primarily new CDB data, collected late 2008, and some data from earlier years. Please note that percentages are rounded to the nearest whole number.



# 1 General Information

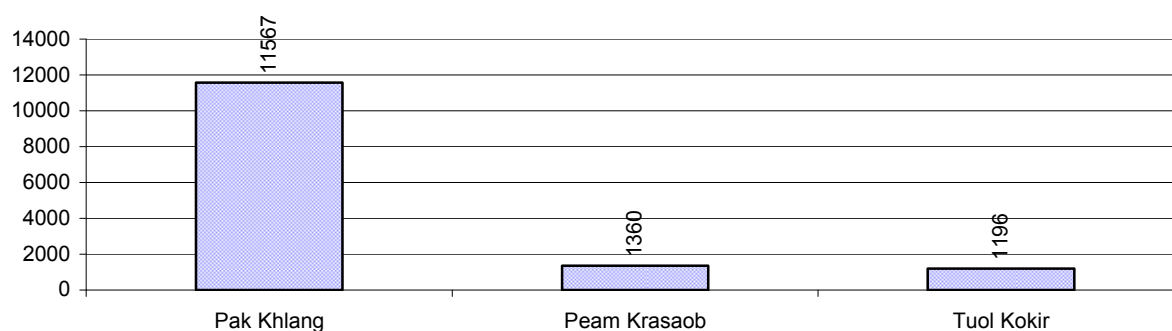
## 1.1 Population of the District

### 1.1.1 Total Population

Number of families	2005	2006	2007	2008
Total number of families	2,698 families	2,770 families	2,733 families	2,733 families
Increase (+)/Decrease (-) in nr of families		3%	-1%	0%
Total population	12,290 pers	15,234 pers	14,323 pers	14,123 pers
Increase (+)/Decrease (-) in nr of people		24%	-6%	-1%
Number of female Headed Households (HH)	327 families	602 families	764 families	442 families

**Note:** Percentages of population and increase/decrease are calculated on basis of the previous year. A negative sign in front of the percentage indicates a decrease in population.

### 1.1.2 Population, by Commune, in 2008



### 1.1.3 Population, by Age Group, over 3 years

Population by age group	2006	2007	2008	
	%	%	%	Number
<b>Age 0-5 years (as percentage of the population)</b>	11%	11%	12%	1,678 persons
Male 0-5 yrs	48%	54%	55%	925 persons
Female 0-5 yrs	52%	46%	45%	753 persons
<b>Age 6-17 (as percentage of the population)</b>	33%	31%	32%	4,496 persons
Male 6-17 yrs	49%	49%	49%	2,201 persons
Female 6-17 yrs	51%	51%	51%	2,295 persons
<b>Age 18-60 (as percentage of the population)</b>	53%	55%	53%	7,514 persons
Male 18-60 yrs	51%	56%	55%	4,147 persons
Female 18-60 yrs	49%	44%	45%	3,367 persons
<b>Age 61 above (as percentage of the population)</b>	3%	3%	3%	435 persons
Male 61	44%	43%	50%	217 persons
Female 61	56%	57%	50%	218 persons

**Note:** The overall percentage for each age group is calculated on the basis of the total population. The gender distribution of each group is calculated on the basis of the population within that particular age group.

## 1.2 Occupations

### 1.2.1 Percentage of families with a particular Occupation over 3 years

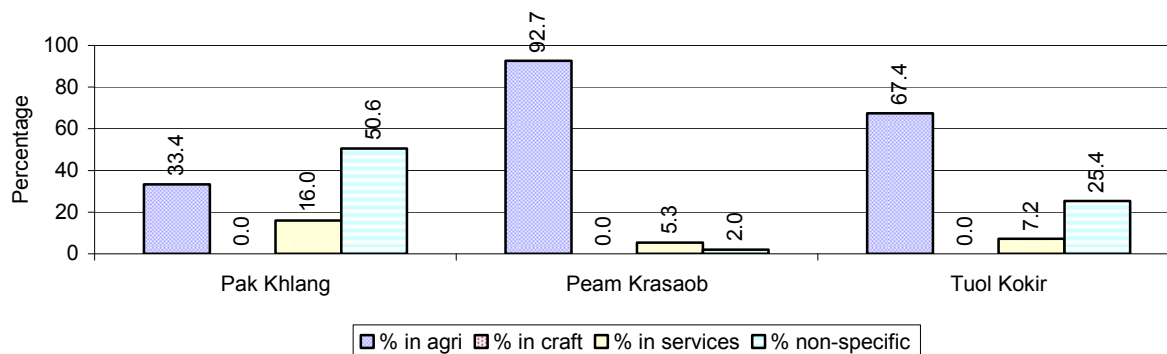
*This table shows the percentage of the population who have a particular occupation (job), for example the percentage of the population in the district who are rice farmers, furniture crafter, trader, etc.*

Description	2006	2007	2008	
	%	%	%	Number
<b>Families whose main occupation is agriculture</b>	49%	46%	43%	1,185 Families
Families whose primary occupation is rice farming	3%	4%	3%	92 Families
Families whose primary occupation is cultivating long-term crops	2%	7%	4%	97 Families
Families whose primary occupation is cultivating short-term crops	4%	6%	3%	89 Families
Families whose primary occupation is cultivating vegetable	3%	4%	2%	66 Families
Families whose primary occupation is fisherman	31%	24%	28%	765 Families
Families whose primary occupation is livestock farmer	6%	3%	3%	76 Families
Families whose primary occupation is NTFP collection	0%	0%	0%	0 Families
<b>Families whose main occupation is craft work</b>	0%	0%	0%	0 Families
Families, whose main occupation is in furniture craft, wooden, rattan, vine, bamboo	0%	0%	0%	0 Families
Families whose main occupation is in metal, aluminum, glass goods production	0%	0%	0%	0 Families
Families whose main occupation is food production	0%	0%	0%	0 Families
Families whose main occupation is tire, plastics and rubber goods production	0%	0%	0%	0 Families
Families whose main occupation is textile, clothing goods production	0%	0%	0%	0 Families
Families whose main occupation is in other production, not listed above	0%	0%	0%	0 Families
<b>Families whose main occupation is services</b>	12%	20%	14%	381 Families
Families whose main occupation is trade	3%	5%	6%	175 Families
Families whose main occupation is repair	1%	1%	1%	24 Families
Families whose main occupation is providing transport services	1%	2%	2%	62 Families
Families whose main occupation is providing other services	6%	12%	4%	120 Families
<b>Families whose main occupation is not clear (or multi)</b>	39%	34%	43%	1,167 Families

**Note:** The occupation percentages are calculated on the basis of the total number of families.

### 1.2.2 Percentage Families that work in one of four occupational sectors, by Commune in 2008

This table indicates the percentage of families involved in one of four occupation types: agriculture, craft, services or non-specific (other). Please note agriculture includes forestry activities such as cutting down trees and gathering gum from the trees.



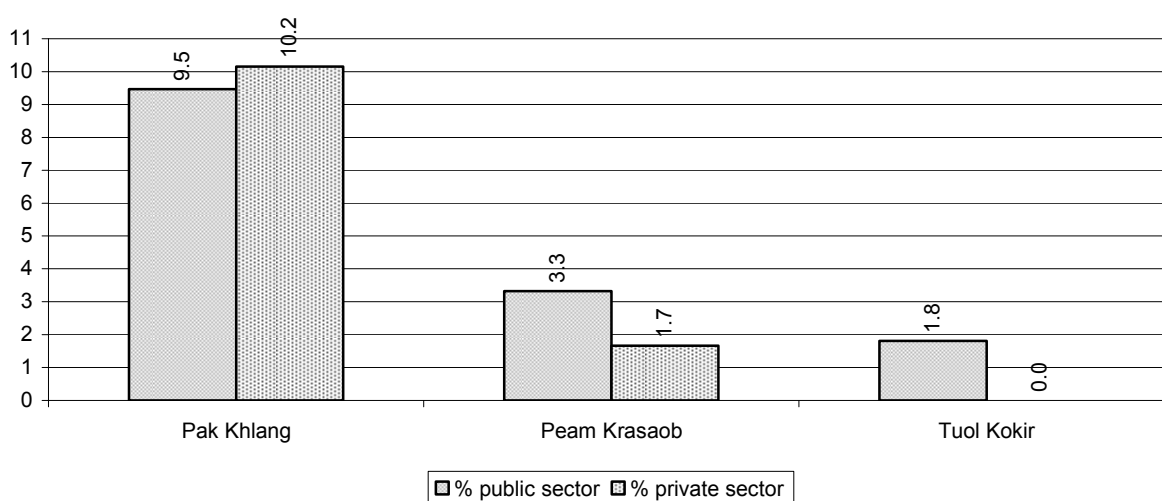
**Note:** Calculated on the basis of the total number of families within a commune.

### 1.2.3 Percentage of Families with public Sector, private Sector or uncertain Jobs, over 3 years

Description	2006	2007	2008	
	%	%	%	Number
Families that have a family member who is a government official, staff or worker	5%	9%	8%	219 families
Families that have a family member who is a private sector staff or worker	4%	8%	8%	224 families
Number of people aged 18-60 with uncertain/irregular jobs	18%	16%	19%	1,433 persons

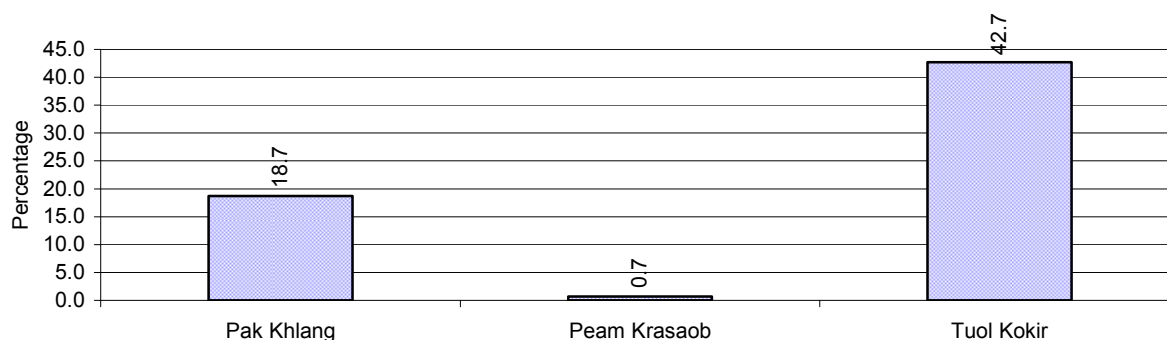
**Note:** In the first two rows percentages are calculated on the basis of the total number of families. In the third row the percentage is calculated on the basis of the total number of people aged 18-60 years.

### 1.2.4 Percentage of Families with public or private Sector Jobs, by Commune in 2008



**Note:** Calculated on the basis of the total number of families in the commune

### 1.2.5 Percentage of People aged 18-60 years with uncertain/irregular Jobs, by Commune, in 2008.



## 1.3 Property

### 1.3.1 Housing types and facilities over 3 years

This table shows the percentage of people living in a certain type of house. It also indicates how many houses have electricity or battery powered lights and how many have TV.

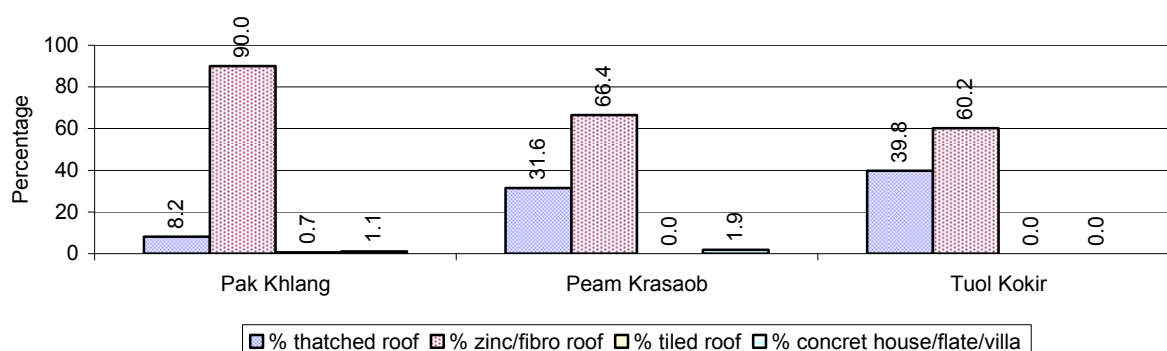
House Type	2006	2007	2008	
	%	%	%	Number
House with thatched roof	21 %	16 %	14 %	372 houses
House with zinc/fibro roof	77 %	82 %	84 %	2,218 houses
House with tiled roof	0 %	1 %	1 %	14 houses
Flats/apartments (with many families living)	0 %	0 %	0 %	5 houses
Concrete house or flat (with one family living)	2 %	1 %	1 %	26 houses
Villa house	0 %	0 %	0 %	0 houses
Houses with electricity	54 %	68 %	69 %	1,823 houses
Houses with battery light	16 %	15 %	19 %	506 houses
Houses with TV	45 %	63 %	62 %	1,639 houses

**Note:** Calculated against the total number of houses

### 1.3.2 Families living on public Land or without a permanent House

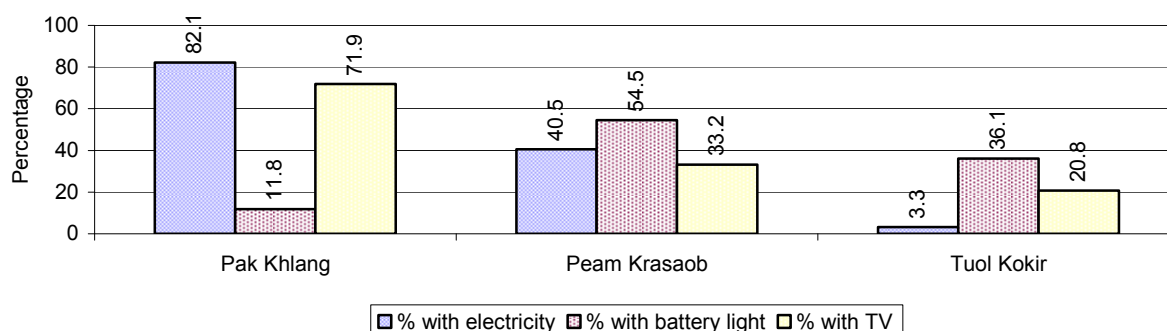
Living situation	2006	2007	2008
Families living in a house on public land	121 families	105 families	58 families
People, without permanent housing	7 person(s)	10 person(s)	5 person(s)

### 1.3.3 Percentage of Population living in a particular type of House, by Commune, in 2008



**Note:** Calculated against the total number of houses in each commune

### 1.3.4 Percentage of Houses with Electricity, Battery Lights and/or TVs, by Commune, in 2008



**Note:** Calculated against the total number of houses in each commune

### 1.3.5 Types of Vehicles and their ratio to Families across 3 years

This table shows the number of families per vehicle in the district. The last column shows the total number of each type of vehicle in the district for 2008.

Description	2006 ratio	2007 ratio	2008	
			Ratio	Number
Bicycle and bicycle with trailer	9	4	4	609
Ox-carts and horse-carts	N/A	N/A	N/A	0
Motorbike/with trailer	7	5	3	794
Motor tri-cycle	2,770	N/A	2,733	1
Large Transportation				
<b>Total number of cars/trucks</b>	41	46	31	88
Locally made vehicles	N/A	N/A	N/A	0
Trucks for goods transport	139	248	182	15
Buses/mini buses for passengers	231	342	182	15
Family cars	79	67	47	58
Agriculture machinery				
Tractors used for plowing	1,385	1,367	1,367	2
Power-tillage used for plowing	198	171	130	21
Other type of machinery				
Other type of machinery	693	161	144	19
Water transportation				
Row boats	21	24	38	71
Total number of motor boats				
Motor boats used for fishing	3	3	3	879
Motor boats used for passengers	554	2,733	88	31
Motor boats used for goods transporting	69	28	23	120

**Note:** Ratio of families to a particular type of vehicle is the result of the total number of families divided by total number of that type of vehicle. Other types of vehicles, such as bulldozer, excavator, rollers etc. are not listed.

## 2 Infrastructure and Economy

### 2.1 Roads in meters over 3 years

Description	2006	2007	2008
Bituminous road	0 m	0 m	0 m
DBST, Macadam road	0 m	0 m	0 m
Concrete road	1,010 m	0 m	960 m
Laterite road	11,931 m	48,776 m	45,961 m
Constructed earth road	5,810 m	8,310 m	10,817 m
Un-constructed earth road	11,310 m	9,626 m	9,346 m

### 2.2 Sewerage Pipes in meters over 3 years

Description	Sewage pipe length		
	2006	2007	2008
Total length of sewage pipe, diameter 30-50 cm	0 m	0 m	0 m
Length of newly constructed sewage pipe, diameter 30-50 cm	0 m	0 m	0 m
Length of sewage pipe, diameter 30-50 cm needs repair/rehabilitation	0 m	0 m	0 m
Total length of sewage pipe, diameter of pipe 60-100 cm	8 m	100 m	142 m
Length of newly constructed sewage pipe, diameter 60-100 cm	17 m	24 m	42 m
Length of sewage pipe, diameter 60-100 cm needs repair/rehabilitation	0 m	0 m	0 m
Sewage pipe, diameter of pipe over 100 cm	49 m	117 m	176 m
Length of newly constructed sewage pipe, diameter over 100 cm	0 m	24 m	55 m
Length of sewage pipe, diameter over 100 cm needs repair/rehabilitation	49 m	49 m	0 m

### 2.3 Drainage and Bridges

Construction Type	2006		2007		2008	
	place(s)	Length	place(s)	Length	place(s)	Length
Single pipe culvert	8	52m	19	165 m	24	189 m
Double-pipe culvert	7	57m	11	91 m	10	93 m
Box pipe culvert	0	0m	8	51m	6	47 m
Wooden bridge	11	951m	10	293m	8	637 m
Concrete bridge	2	290m	2	2,180m	1	130 m
Bale bridge	0	0m	11	262m	1	130 m
Spillway construction	2	100m	0	0m	0	0 m

### 2.4 Services in the District

Descriptions	Number of places by year		
	2006	2007	2008
<b>Public</b>			
Electricity generating stations	2	2	2
Health clinics	0	0	0
<b>Private</b>			
Bicycle and motorcycle repair places	9	10	11
Agricultural machinery, tools and equipment repair places	3	4	4
Electronic tool repair places	6	7	7
Battery-charging services	14	10	9
Handicraft places, wooden furniture and forest by-products	2	2	2
Other handicraft places (excluding furniture)	0	2	2
Small-scale services (hairstylist, phone service, massage,	29	338	56



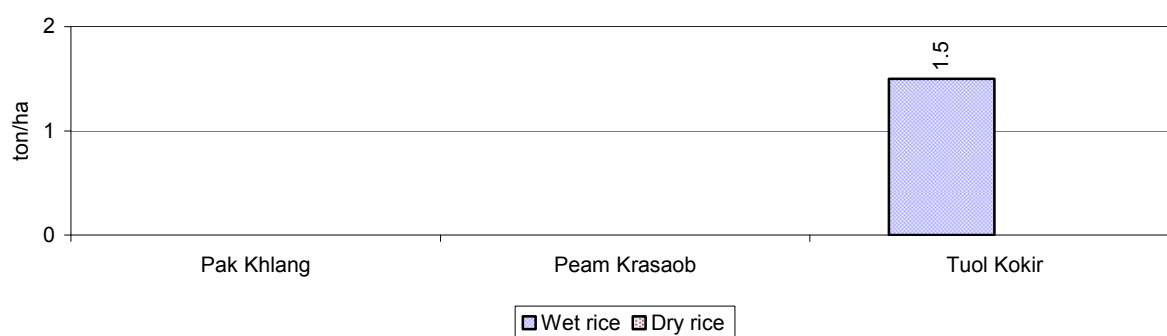
Descriptions	Number of places by year		
	2006	2007	2008
Karaoke, etc)			
Small-scale food shop businesses (Food, groceries, drink shop, etc)	216	138	106
Small-scale rice mills	5	8	8
Medium or large-scale rice mills	0	0	0
Small-scale markets	0	1	1
Large-scale market	2	2	2
Alcohol refinery places	12	10	10
Pharmacies and small drug stores	5	1	2
Hotels	1	1	1
Guest houses	4	3	3
Restaurants	2	4	3
Gasoline stations	1	1	2

## 2.5 Agriculture

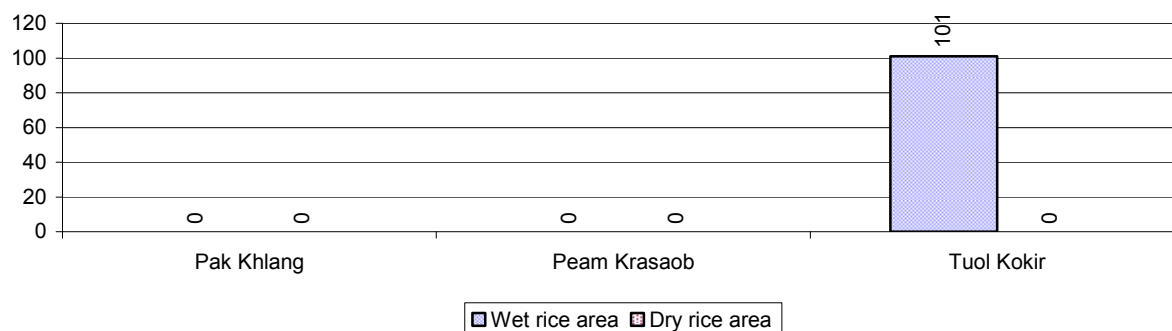
### 2.5.1 Rice cultivation in the District over 3 years

Description	2006	2007	2008
Total dry rice land area	0 ha	0 ha	0 ha
Actual dry rice cultivation area	0 ha	0 ha	0 ha
% actual cultivation to total land	-%	-%	-%
Total dry rice production	- tonne(s)	- tonne(s)	- tonne(s)
Average dry rice yield	- tonne(s)/ha	- tonne(s)/ha	- tonne(s)/ha
Total wet rice land area	324 ha	125 ha	124 ha
Actual wet rice cultivation area	301 ha	99 ha	101 ha
% actual cultivation to total land	93 %	79%	81%
Total wet rice production	227.26 tonne(s)	148.50 tonne(s)	151.50 tonne(s)
Average wet rice yield	0.8 tonne(s)/ha	1.5 tonne(s)/ha	1.5 tonne(s)/ha
Total intensive rice land area	201 ha	1 ha	0 ha
Actual intensive rice cultivation area	- ha	- ha	- ha
Average intensive rice yield	- tonne(s)/ha	- tonne(s)/ha	- tonne(s)/ha
Actual upland rice cultivation area	21 ha	15 ha	17 ha
Total upland rice production	14 tonne(s)	23 tonne(s)	26 tonne(s)
Average upland rice yield	0.7 tonne(s)/ha	1.5 tonne(s)/ha	1.5 tonne(s)/ha

### 2.5.2 Estimated wet and dry Season Rice Yield in tonne(s)/Ha, by Commune, in 2008



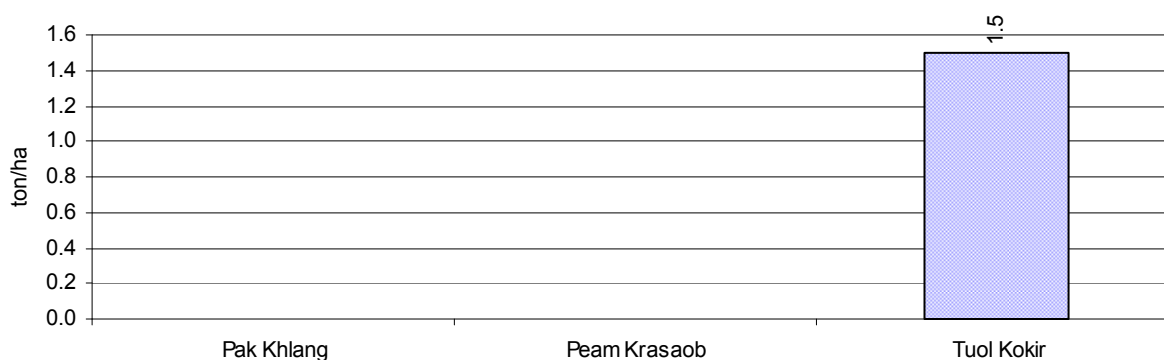
### 2.5.3 Cultivated wet and dry Season Rice areas in Ha, by Commune, in 2008



### 2.5.4 Estimated intensive Rice Yields in tonnes/Ha, by Commune, for 2008

There were no estimated intensive rice yields in this District in 2008

### 2.5.5 Estimated upland Rice Yield in tonnes/Ha, by Commune, for 2008

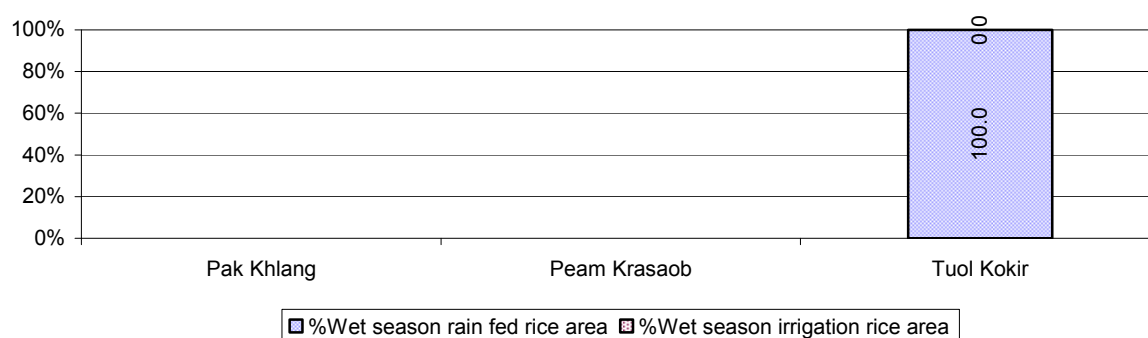


### 2.5.6 Wet season Rice irrigation across 3 years

Description		2006	2007	2008	
		%	%	%	Number
Total area of wet season rain fed rice land		100%	100%	100 %	101 ha
Percentage of wet season rice land that is irrigated; and for 2008 area in Ha		27 %	0 %	0 %	0 ha
Where	Area irrigated from canal/dam	0 %	- %	- %	0 ha
	Area irrigated from river, stream, lake, natural pond	0 %	- %	- %	0 ha
	Area irrigated from drilled well	0 %	- %	- %	0 ha
	Area irrigated from dug pond	0 %	- %	- %	0 ha

### 2.5.7 Water sources for wet Season Rice Cultivation, by Commune, in 2008

This chart shows the percentage of wet season rice cultivation receiving water from rain (natural) and from irrigation.



### 2.5.8 Access to Irrigation

Description	2006	2007	2008	
	%	%	%	Number
Families who have access to irrigation water	33%	0%	0%	0 families
Families who have irrigation wells	3%	3%	3%	3 families

**Note:** Calculated against the total number of families are rice farmers

### 2.5.9 Number of Irrigation Wells over 3 years

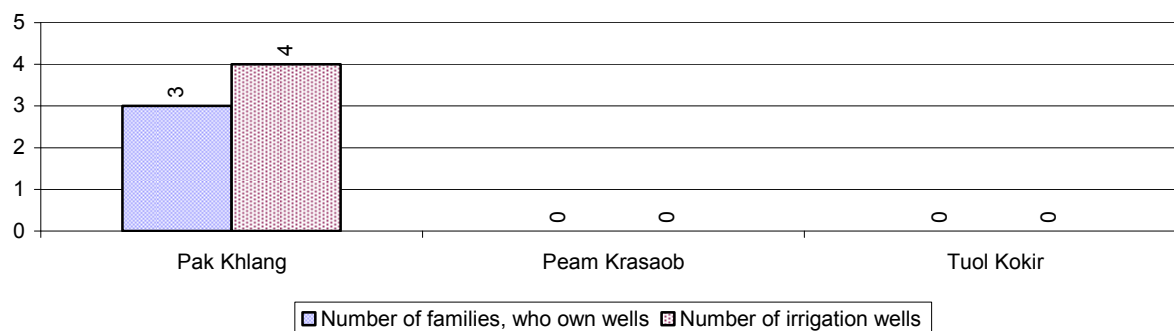
Description	2006	2007	2008
Number of irrigation wells	2 wells	4 wells	4 wells

### 2.5.10 Percentage of Families with access to (supplemental) Irrigation for wet Season Rice cultivation, by Commune, in 2008

There are no families with access to supplemental irrigation for wet season rice irrigation in this District in 2008

**Note:** % of families, with access to irrigation is calculated against the total number of families, whose main occupation is rice farming. Irrigated wet rice land area is calculated against the total actual wet rice land cultivated areas

### 2.5.11 Irrigation Wells, by Commune, in 2008

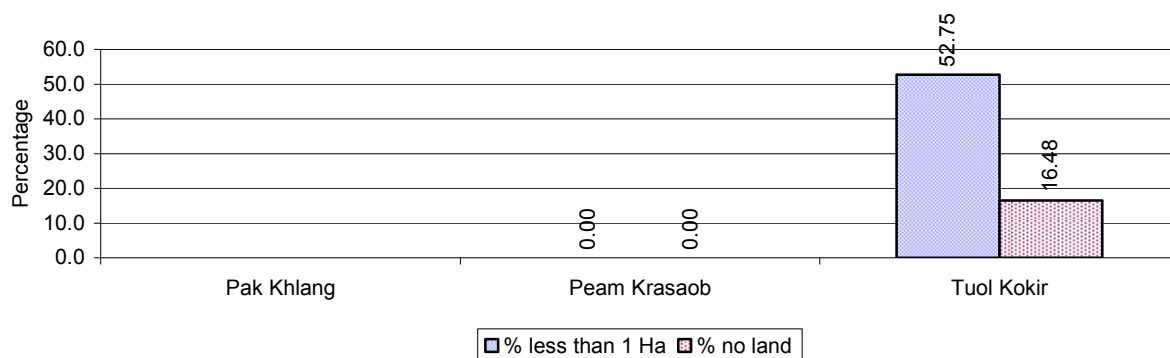


### 2.5.12 Farmers owning less than one hectare of Rice Land

Description	2006	2007	2008	
	%	%	%	Number
Families who have less than one hectare of rice land	37%	57%	52%	48 families
Families who do not own any rice land	47%	19%	16%	15 families

**Note:** Calculated on basis of total number of families who are rice farming

### 2.5.13 Percentage of Farmers with less than one Hectare or no Rice Land, by Commune, in 2008

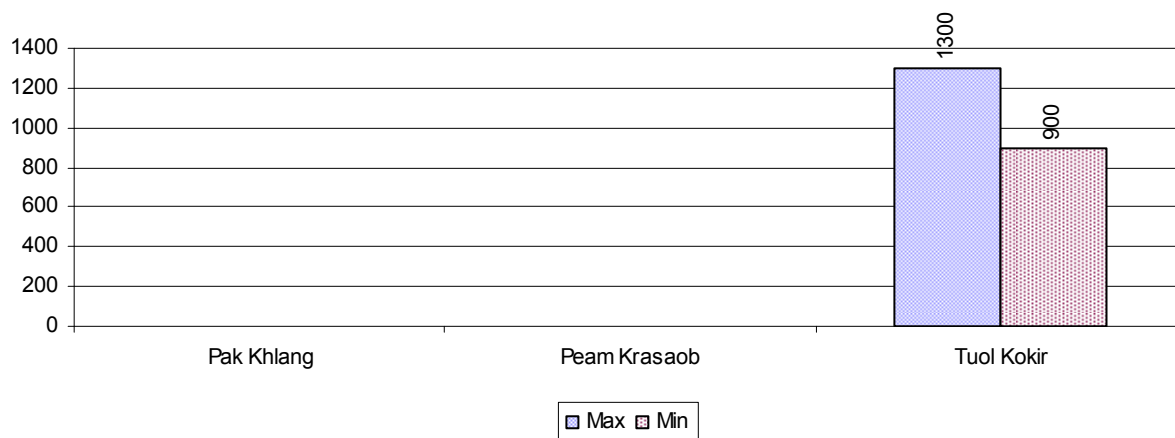


**Note:** Calculated on basis of total number of families who are rice farming

### 2.5.14 Average farm-gate Prices of Rice, over 3 years

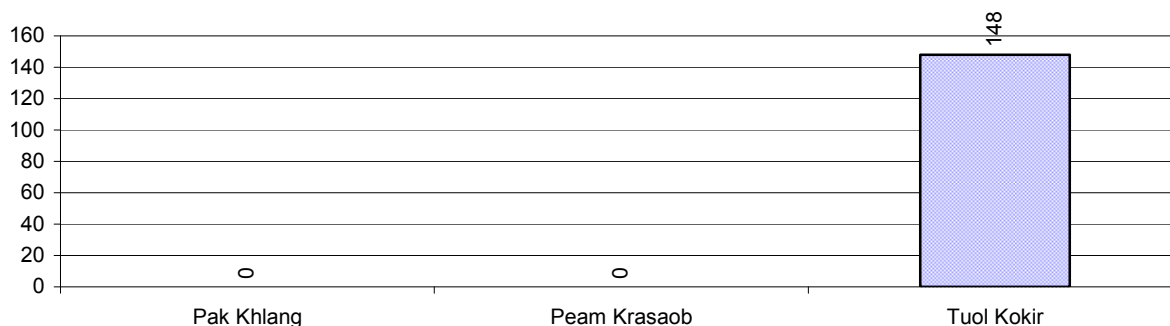
Description	2006	2007	2008
Maximum average farm gate price	675 Riels/Kg	1,350 Riels/Kg	1,300 Riels/Kg
Minimum average farm gate price	550 Riels/Kg	1,100 Riels/Kg	900 Riels/Kg
Average farm gate price	613 Riels/Kg	1,225 Riels/Kg	1,100 Riels/Kg
Average rice production per person	26 Kg/person	12 Kg/person	13 Kg/person

### 2.5.15 Minimum and maximum farm-gate Prices of Rice in Riel/kg, by Commune, in 2008



### 2.5.16 Production of Paddy in Kgs/Person, by Commune, in 2008

This table shows how much paddy (harvested rice) is produced in a year in a commune, in kgs per person.



### 2.5.17 Production of other Crops, over 3 years

Crops	2006	2007	2008
Corn cultivation area	0 ha	0 ha	0 ha
Estimated corn yield	- tonne(s)/ha	- tonne(s)/ha	- tonne(s)/ha
Estimated corn production	- tonne(s)	- tonne(s)	- tonne(s)
Soya bean cultivation area	0 ha	0 ha	0 ha
Estimated Soya bean yield	- tonne(s)/ha	- tonne(s)/ha	- tonne(s)/ha
Estimated Soya bean production	- tonne(s)	- tonne(s)	- tonne(s)
Mungbean cultivation area	0 ha	0 ha	0 ha
Estimated Mungbean yield	- tonne(s)/ha	- tonne(s)/ha	- tonne(s)/ha
Estimated Mungbean production	- tonne(s)	- tonne(s)	- tonne(s)
Peanut cultivation area	0 ha	0 ha	0 ha
Estimated Peanut yield	- tonne(s)/ha	- tonne(s)/ha	- tonne(s)/ha
Estimated Peanut production	- tonne(s)	- tonne(s)	- tonne(s)
Cassava cultivation area	0 ha	0 ha	0 ha
Estimated Cassava yield	- tonne(s)/ha	- tonne(s)/ha	- tonne(s)/ha
Estimated Cassava production	- tonne(s)	- tonne(s)	- tonne(s)
Sweet potatoes cultivation area	0 ha	0 ha	0 ha
Estimated Sweet potatoes yield	- tonne(s)/ha	- tonne(s)/ha	- tonne(s)/ha
Estimated Sweet potatoes production	- tonne(s)	- tonne(s)	- tonne(s)
Sesame cultivation area	0 ha	0 ha	0 ha
Estimated Sesame yield	- tonne(s)/ha	- tonne(s)/ha	- tonne(s)/ha
Estimated Sesame production	- tonne(s)	- tonne(s)	- tonne(s)

### 2.5.18 Yields of Corn, Soya beans and Mungbeans in tonne(s)/ha, by Commune, in 2008

There were no yields for any of these crops in this District in 2008

### 2.5.19 Yields of Peanuts and Cassava in tonne(s)/ha by Commune, in 2008

There were no yields for any of these crops in this District in 2008

### 2.5.20 Yields of Sweet Potatoes and Sesame in tonne(s)/ha, by Commune, in 2008

There were no yields for any of these crops in this District in 2008

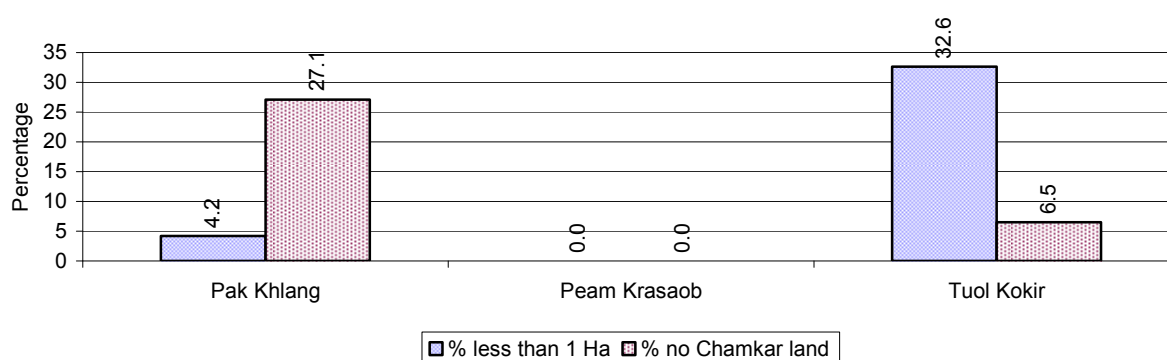
### 2.5.21 Percentage Farmers who own less than 1 Ha or no Chamkar land

Description	2006	2007	2008	
	%	%	%	Number
Families, who own less than 1ha of Chamkar land	5%	49%	9%	22 families
Families, with no Chamkar land	7%	44%	19%	48 families

**Note 1:** Calculated as a percentage of the total number of families whose main occupation is Chamkar (not rice) farming

**Note 2:** Chamkar land is no-rice land, i.e. other crops

### 2.5.22 Percentage Farmers owning less than 1 ha or no Chamkar land, by Commune, in 2008



**Note:** Percentage is calculated among families, who Chamkar farm as a main occupation, not the total population of the commune.

### 2.5.23 Percentage of Families raising Cattle/Buffalo, over 3 years

Description	2006	2007	2008	
	%	%	%	Number
Families raising cattle/buffalo	2%	3%	4%	107 families
Families raising cattle/buffalo as labor forces	2%	2%	2%	54 families

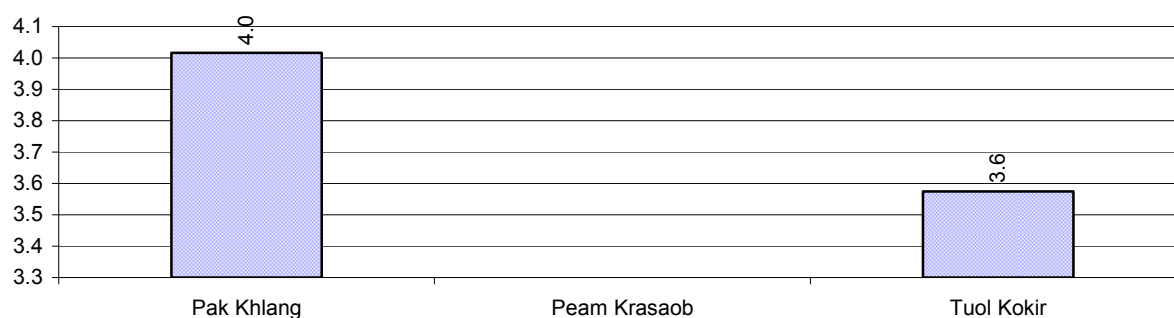
**Note:** Calculated against the total number of families.

### 2.5.24 Number of Cattle/buffalo being raised, over 3 years

Description	2006	2007	2008
Total number of cattle/buffalo	336 head(s)	488 head(s)	409 head(s)
Average cattle/buffalo per families	5.2 head(s)/families	5.5 head(s)/families	4 head(s)/families

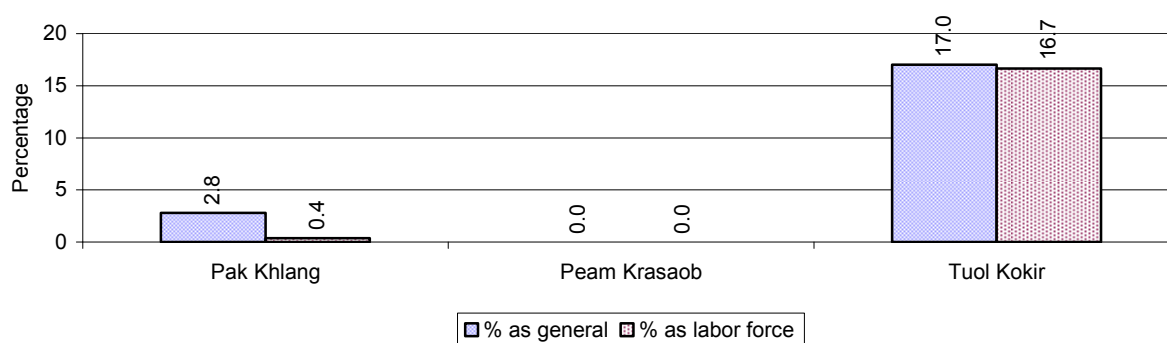
**Note:** Calculated by dividing total number of cattle/buffalo by total number of cattle/buffalo raising families

### 2.5.25 Average number of Cattle/Buffalo per Family, by Commune, in 2008



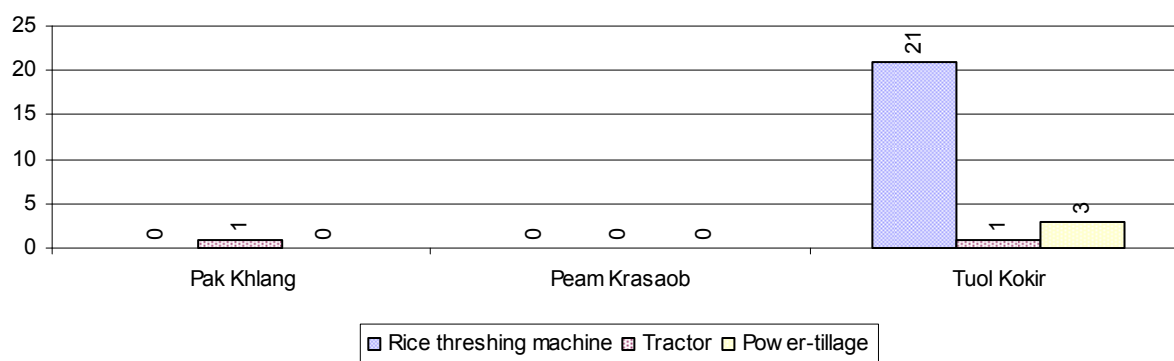
**Note:** Calculated by dividing total number of cattle/buffalo by total number of cattle/buffalo raising families

### 2.5.26 Percentage Families raising Cattle/Buffalo, for general and labor purposes in 2008, by Commune



**Note:** Calculated using the total number of families raising cattle/buffalo against the total number of families.

### 2.5.27 Type and number of agricultural Machines, by Commune, in 2008

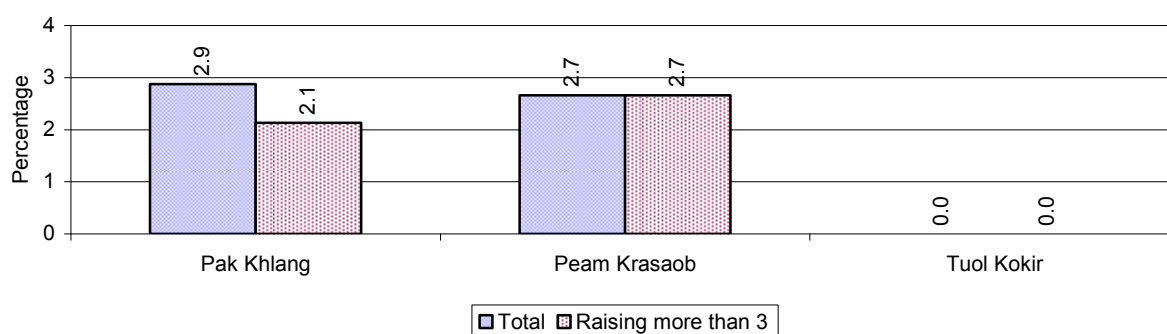


### 2.5.28 Livestock-producing Households over 3 years

Description	2006 %	2007 %	2008	
			%	Number
Total number of families raising pigs	5%	4%	3%	70 families
number of families raising more than 3 pigs	1%	2%	2%	54 families
Total number of families raising chickens	44%	32%	34%	941 families
number of families raising more than 3 chickens	23%	23%	26%	707 families
Total number of families raising ducks	3%	2%	2%	52 families
number of families raising more than 5 ducks	2%	2%	2%	47 families
Total number of families raising goats or sheep	0%	0%	0%	10 families
Total number of families raising horses	0%	0%	0%	0 families

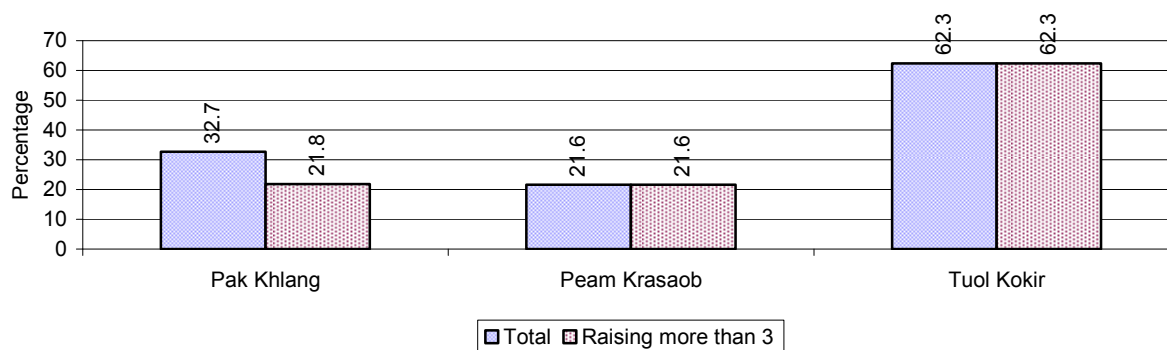
**Note:** Calculated against the total number of families

### 2.5.29 Percentage Families raising Pigs, by Commune, in 2008



**Note:** Calculated against the total number of families in the commune

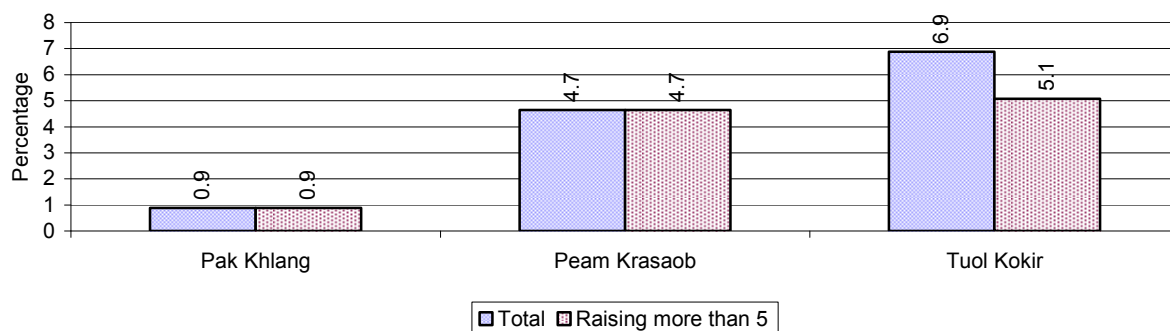
### 2.5.30 Percentage Families raising Chickens, by Commune, in 2008



**Note:** Calculated against the total number of families in the commune

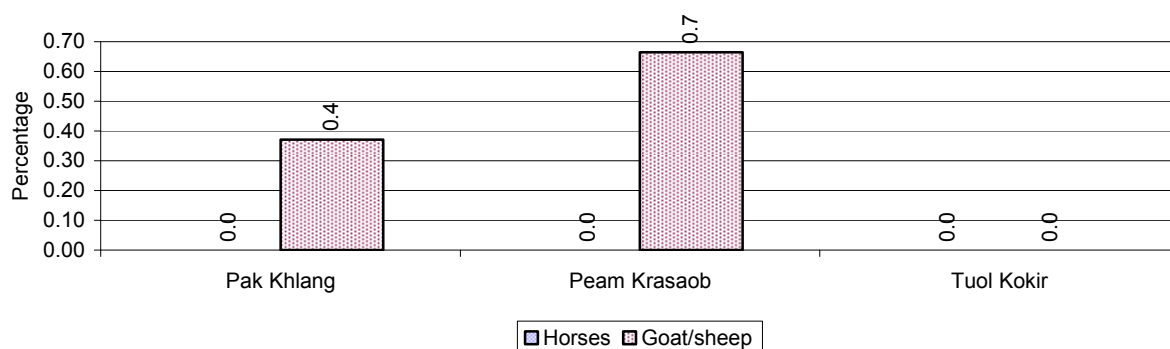


### 2.5.31 Percentage Families raising Ducks, by Commune, in 2008



**Note:** Calculated against the total number of families in the commune

### 2.5.32 Percentage Families raising Horses, Goats or Sheep, by Commune, in 2008

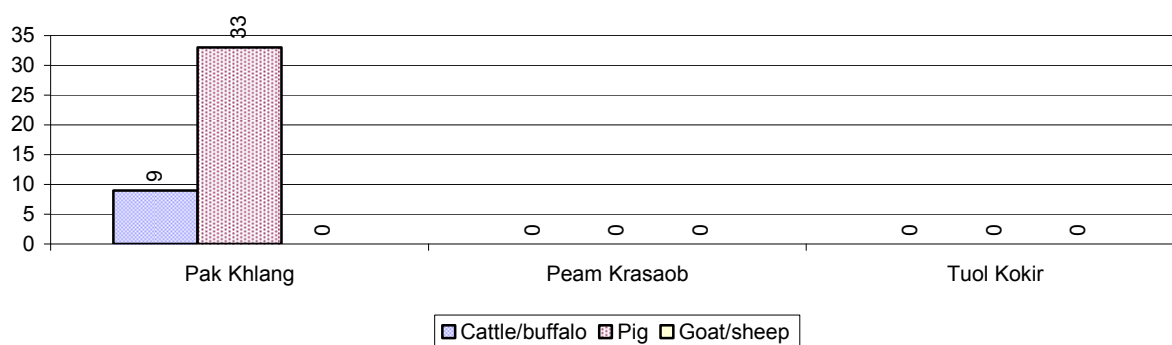


**Note:** Calculated against the total number of families in the commune

### 2.5.33 Livestock Farms over 3 years

Description	2006	2007	2008
Number of cattle/buffalo farms	3 farm(s)	11 farm(s)	9 farm(s)
Number of pig farms	1 farm(s)	6 farm(s)	33 farm(s)
Number of goat/sheep farms	2 farm(s)	4 farm(s)	0 farm(s)
Number of chicken farms	0 farm(s)	1 farm(s)	0 farm(s)
Number of duck farms	2 farm(s)	0 farm(s)	0 farm(s)

### 2.5.34 Number Livestock Farms, by Commune in 2008



**Note:** Number of farms are recorded by the village chief, not by counting number of livestock in each farm

### 2.5.35 Number Chicken and Duck Farms, by Commune, for 2008

There were no farms of this type in this District in 2008

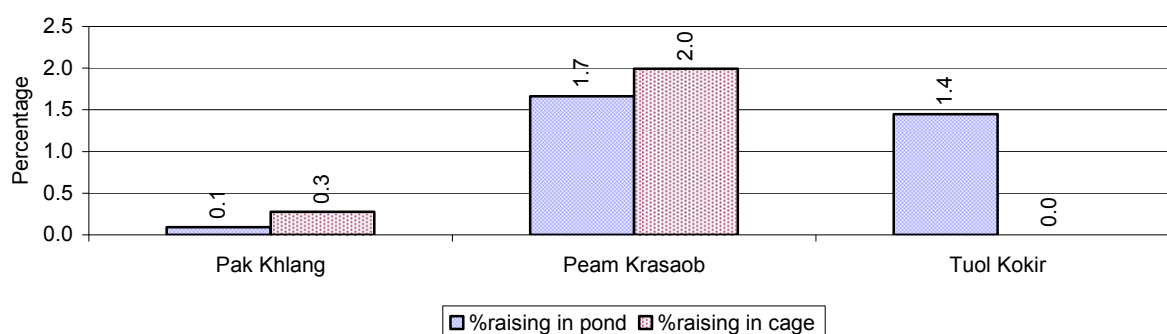
**Note:** Number of farm places recorded by village chief, not by counting number of livestock in each farm

### 2.5.36 Families raising Fish over 3 years

Description	2006	2007	2008
Total number of families raising fish	12 families	11 families	23 families
% families raising fish	0%	0%	1%
Number families raising fish in pond	5 families	4 families	11 families
% families raising fish in pond	0%	0 %	0%
Number fish pond	10 pond(s)	6 pond(s)	11 pond(s)
No. of ponds per family	2.0 pond/families	1.5 pond/families	1.0 pond/families
Number of families raising fish in cage	7 families	7 families	12 families
%families raising fish in cage	0 %	0 %	0%
Number of fish cage	21 cage(s)	20 cage(s)	62 cage(s)
No. of fish cage per family	3.0 cage /families	2.9 cage /families	5.2 cage /families

**Note:** % of families raising fish or fish in ponds or cages is calculated a percentage of the total number of families.

### 2.5.37 Percentage of Families raising Fish, by Commune, in 2008



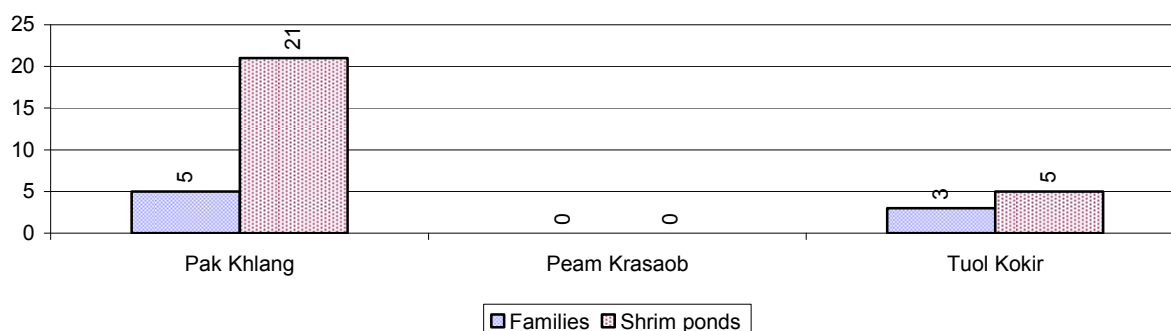
**Note:** Calculated as a percentage of the total number of families in the commune.

### 2.5.38 Shrimp and Prawn Farming over 3 years

Description	2006	2007	2008
Number of families raising shrimps	2 families	28 families	8 families
% Families raising shrimps	0%	1%	0%
Number of shrimp ponds	2 pond	27 pond	26 pond
Total area raising shrimps	2 ha	30 ha	30 ha
Area per family	1ha/families	1ha/families	4ha/families
Number of families raising prawns	0 families	0 families	0 families
% families raising prawns	0%	0%	0%
Number prawn ponds	0 pond	0 pond	0 pond
Ponds per families	- pond/families	-pond/families	-pond/families
Number of prawn cages	0 cage	0 cage	0 cage
Cages per families	0 cage /families	0 cage /families	0 cage /families

**Note:** Percentage of families raising either prawns or shrimp is calculated against the number of families, who do aquaculture farming, NOT the total population.

### 2.5.39 Numbers of Families raising Shrimps and number of Shrimp Ponds, by Commune, in 2008



### 2.5.40 Number of Families raising Prawn and Number of Prawn Ponds/Cages, by Commune, in 2008

There were none of these in this District in 2008

## 3 Social Aspects

### 3.1 Education

#### 3.1.1 Kindergarten in the District over 3 years

Description	2006	2007	2008
Number of community kindergarten schools	1 school(s)	0 school(s)	1 school(s)
Number of community kindergarten class rooms	1 room(s)	0 room(s)	1 room(s)
Number of community kindergarten classes	1 class(es)	0 class(es)	1 class(es)
Number of community kindergarten teachers	1 person(s)	0 person(s)	1 person(s)
Number of women community kindergarten teachers	1 women	0 women	1 women
Number of state and private kindergarten schools	1 school(s)	1 school(s)	1 school(s)
Number of state and private kindergarten class rooms	1 room(s)	2 room(s)	2 room(s)
Number of state and private kindergarten classes	1 class(e)s	2 class(es)	2 class(es)
Number of state and private kindergarten teachers	1 person(s)	2 person(s)	2 person(s)
Number of women state and private kindergarten teachers	1 women	2 women	2 women

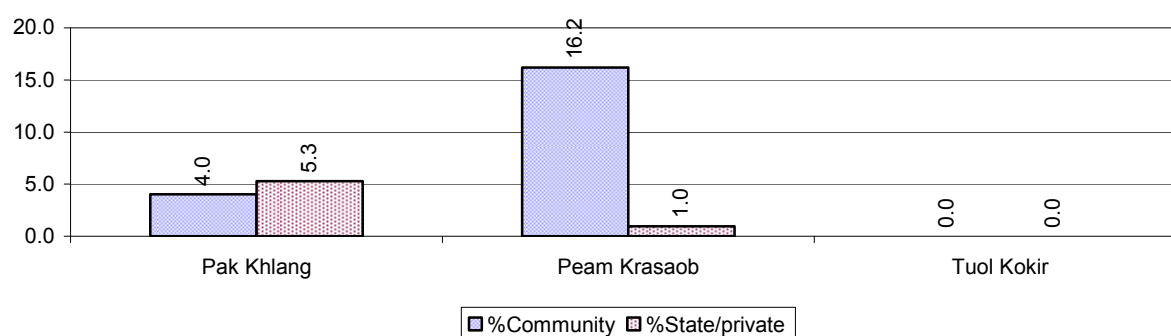
### 3.1.2 Percentage enrolment at Kindergarten level over 3 years

This table shows the percentage of the total 3-5 year old population attending kindergarten.

Description	2006 %	2007 %	2008	
			%	Number
Total percentage of children, 3-5 yrs, go to kindergarten	28%	6%	9%	99 person(s)
Percentage of children, 3-5 yrs, go community kindergarten	9%	3%	5%	52 person(s)
Percentage children, 3-5 yrs, go state/private kindergarten	20%	2%	4%	47 person(s)

**Note:** Calculated against the total for that age group

### 3.1.3 Percentage of Children 3-5 yrs attending Kindergarten, by Commune, in 2008



### 3.1.4 Basic Education over 3 years

#### Primary School

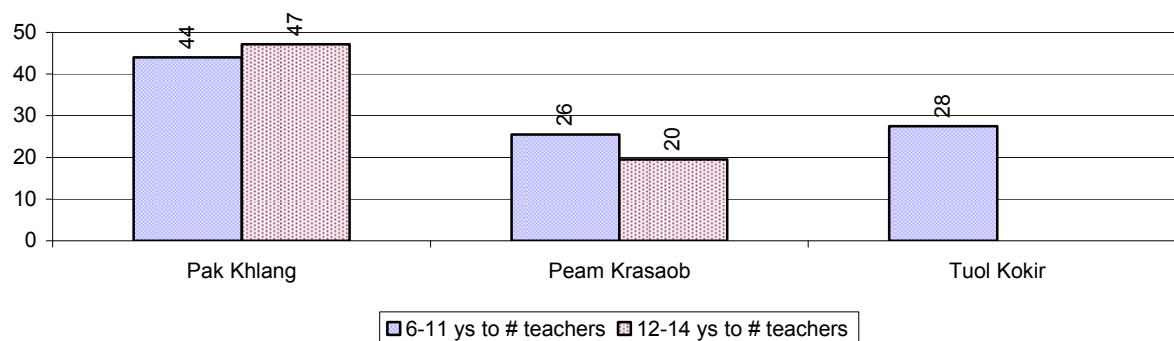
Description	2006	2007	2008
Number of primary schools	10 school(s)	10 school(s)	9 school(s)
Number of primary school rooms	47 room(s)	48 room(s)	45 room(s)
Number of primary classes	63 class(es)	64 class(es)	61 class(es)
Number of primary teachers	44 person(s)	52 person(s)	55 person(s)
Ratio of children 6-11 yrs to school	240	211	241
Ratio of children 6-11 yrs to school room	51	44	48
Ratio of children 6-11 yrs to class	38	33	36
Ratio of children 6-11 yrs to teacher	54	41	39

**Note:** According to education norm, children 6-11 yrs should attend primary school, while 12-14 yrs should be in lower secondary school, but in reality this varies.

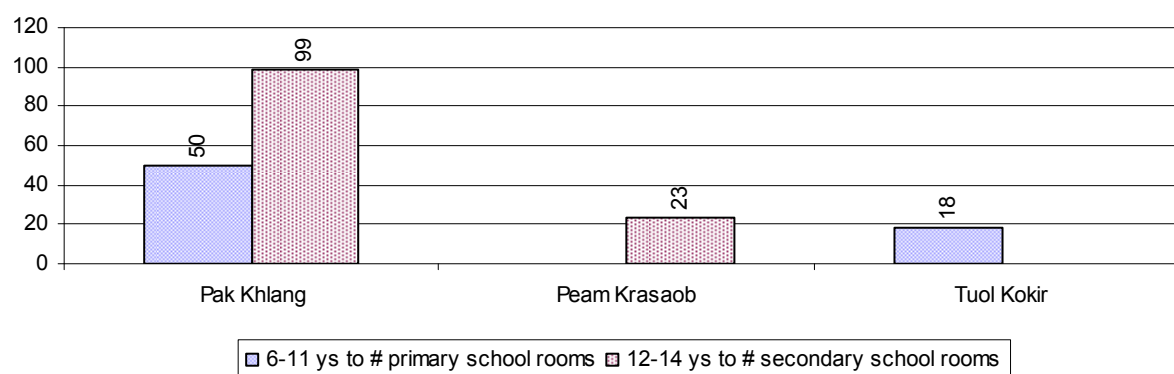
#### Lower Secondary School

Description	2006	2007	2008
Number of lower secondary schools	2 school(s)	2 school(s)	3 school(s)
Number of lower secondary school rooms	5 room(s)	10 room(s)	15 room(s)
Number of lower secondary classes	9 class(es)	10 class(es)	12 class(es)
Number of lower secondary teachers	16 person(s)	21 person(s)	27 person(s)
Ratio children 12-14 yrs to school	684	587	401
Ratio of children 12-14 yrs to school room	273	117	80
Ratio of children 12-14 yrs to class	152	117	100
Ratio of children 12-14 yrs to teacher	85	56	45

### 3.1.5 Ratio of 6-11 year old and 12-14 year old Children to number of Teachers, by Commune, in 2008



### 3.1.6 Ratio of 6-11 year old and 12-14 year old Children to number of School Rooms, by Commune, in 2008



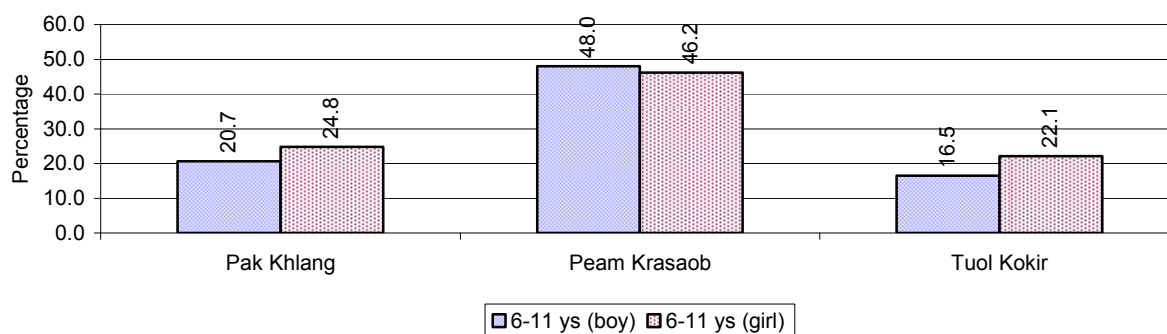
### 3.1.7 Enrolment status at Primary Level over 3 years

Description	2006 %	2007 %	2008	
			%	Number
Total children aged 6-11 years old	16%	15%	15%	2,172 person(s)
Total children aged 6-11 who are in school	77%	79%	75%	1,634 person(s)
Total children aged 6-11 who are not in school	23%	21%	25%	538 person(s)
Total girls aged 6-11 years old	16%	16%	17%	1,107 person(s)
Total girls aged 6-11 who are in school	75%	81%	73%	813 person(s)
Total girls aged 6-11 who are not in school	25%	19%	27%	294 person(s)
Total boys aged 6-11 years old	16%	14%	14%	1,065 person(s)
Total boys aged 6-11 who are in school	78%	77%	77%	821 person(s)
Total boys aged 6-11 who are not in school	22%	23%	23%	244 person(s)

**Note 1:** Percentage is calculated on the basis of the total number of children within 6-11 year age group for the first 3 rows and for the total girls and the total boys aged 6-11 yrs.

**Note 2:** Number of girls aged 6-11 who are in & not in school is calculated against the total number of girls aged 6-11 yrs. Number boys, 6-11 yrs who are in & not in school are calculated against the total number of boys aged 6-11 yrs.

### 3.1.8 Percentage of 6-11 year old Children not in School, by Commune, in 2008



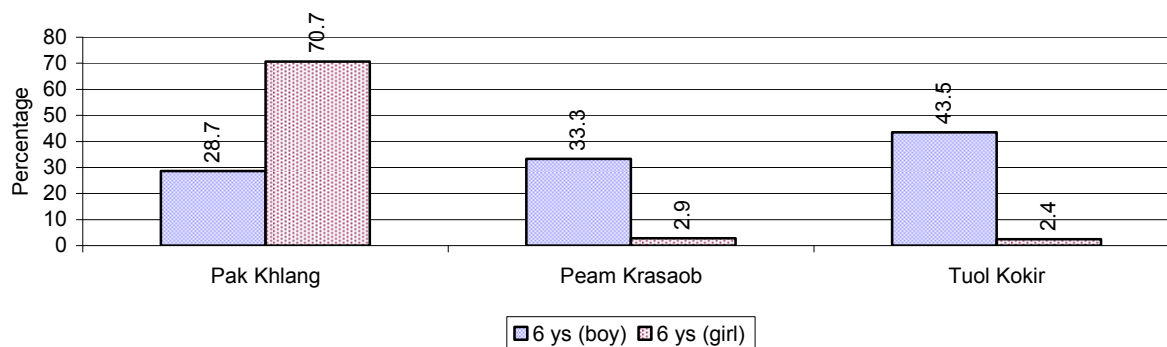
**Note:** calculated on the basis of the total number of children within 6-11 year age group in the commune.

### 3.1.9 Enrolment of 6 year old Children over 3 years

Description	2006 %	2007 %	2008	
			%	Number
Total % and number of children aged 6 years old	5%	4%	4%	614 person(s)
Total % of children aged 6 years old in school	75%	66%	63%	386 person(s)
Total % of children aged 6 years old not in school	25%	34%	37%	228 person(s)

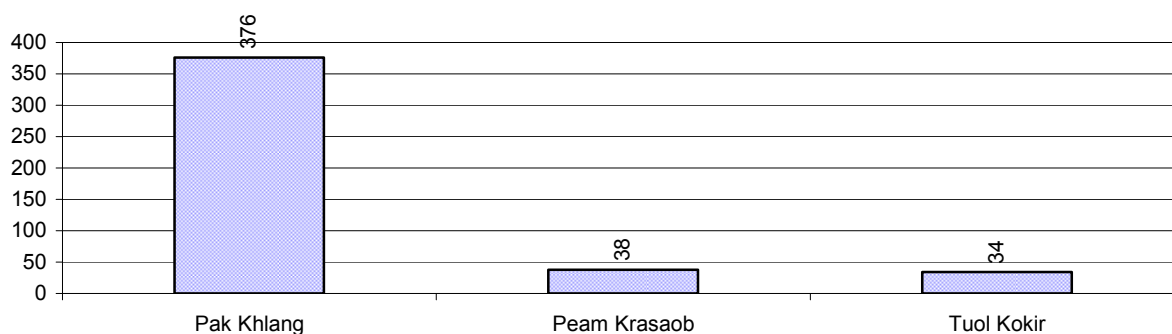
**Note:** First row calculated as a percentage of total population. Second and third row calculated as a percentage of the total number of 6 year olds.

### 3.1.10 Percentage of 6 year old Children not in School, by Commune, in 2008



**Note:** Calculated as a percentage of total 6 year old population

### 3.1.11 Number of 5 year old Children in each Commune in 2008

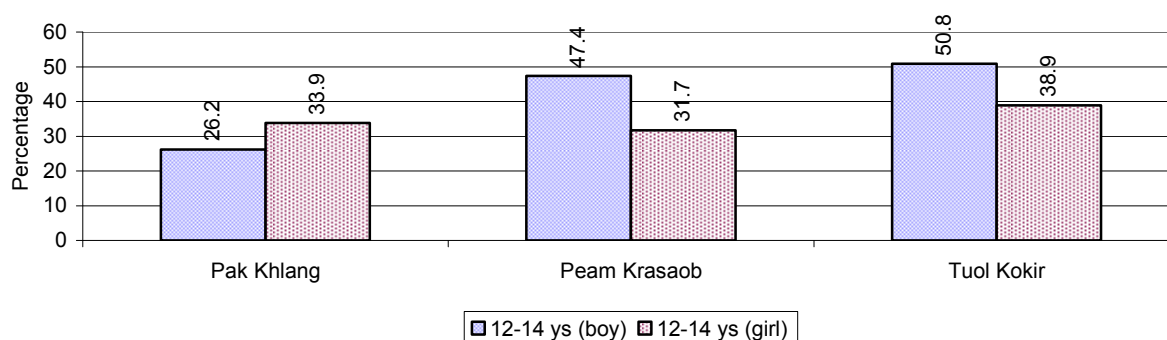


### 3.1.12 Enrolment at Lower Secondary Level over 3 years

Description	2006 %	2007 %	2008	
			%	Number
Total <b>children</b> aged 12-14 years old	9%	8%	9%	1,203 person(s)
Children aged 12-14 years old in school	76%	72%	68%	815 person(s)
Children aged 12-14 years old not in school	24%	28%	32%	388 person(s)
Total <b>girls</b> aged 12-14 years old	9%	9%	9%	598 person(s)
Girls aged 12-14 years old in school	76%	69%	66%	395 person(s)
Girls aged 12-14 years old not in school	24%	31%	34%	203 person(s)
Total <b>boys</b> aged 12-14 years old	9%	7%	8%	605 person(s)
Boys aged 12-14 years old in school	75%	76%	69%	420 person(s)
Boys aged 12-14 years old not in school	25%	24%	31%	185 person(s)

**Note:** Percentage is calculated on the basis of number of the total number of children within 12-14 yrs group, except for the first row of each section which is calculated on the basis of the total population.

### 3.1.13 Percentage of 12-14 year olds not in School, by Commune, in 2008



**Note:** Calculated as a percentage of the total 12-14 year old population in each commune

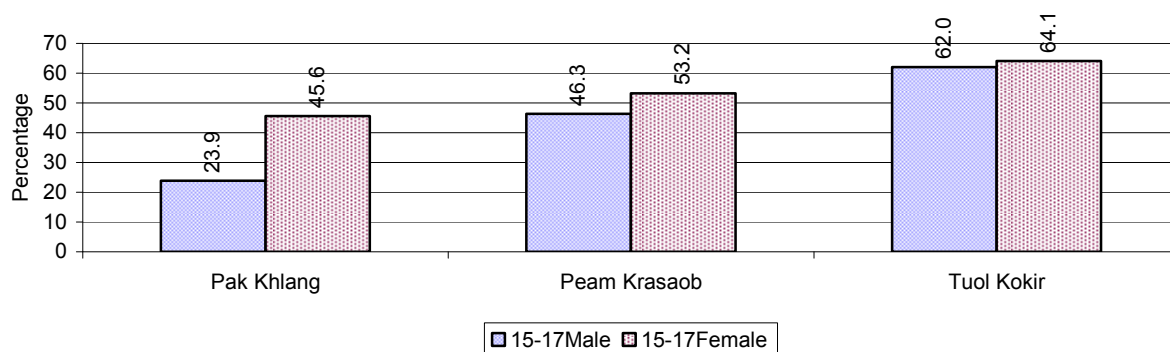
### 3.1.14 Upper Secondary Schools over 3 years

Description	2006	2007	2008
Number of upper secondary schools	0 school(s)	1 school(s)	1 school(s)
Number of upper secondary school rooms	0 room(s)	5 room(s)	5 room(s)
Number of upper secondary classes	0 class(es)	2 class(es)	2 class(es)
Number of upper secondary teachers	0 person(s)	0 person(s)	0 person(s)
Ratio of 15-17 yr olds to number of school	N/A	1,125	1,121
Ratio of 15-17 yr olds to number of school room	N/A	225	224
Ratio of 15-17 yr olds to number of classes	N/A	563	561
Ratio of 15-17 yr olds to number of teacher	N/A	N/A	N/A

### 3.1.15 Enrolment of 15-17 year old teenagers over 3 years

Description	2006	2007	2008
Number of teenage, 15-17 years old	1,255 person(s)	1,125 person(s)	1,121 person(s)
Number of teenage, 15-17 years old, who are not studying	479 person(s)	344 person(s)	435 person(s)
Percentage of teenage, 15-17 years old not studying	38%	31%	39%

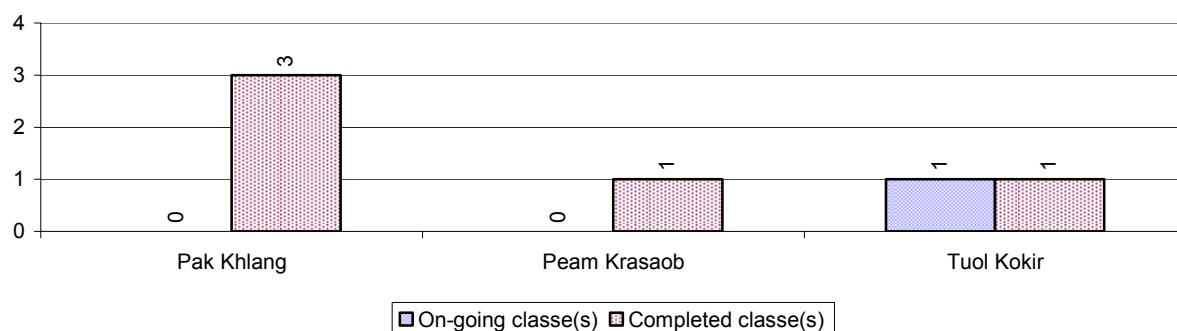
### 3.1.16 Percentage of 15-17 year old Teenagers not at School, by Commune, in 2008



### 3.1.17 Literacy Classes as of 2008

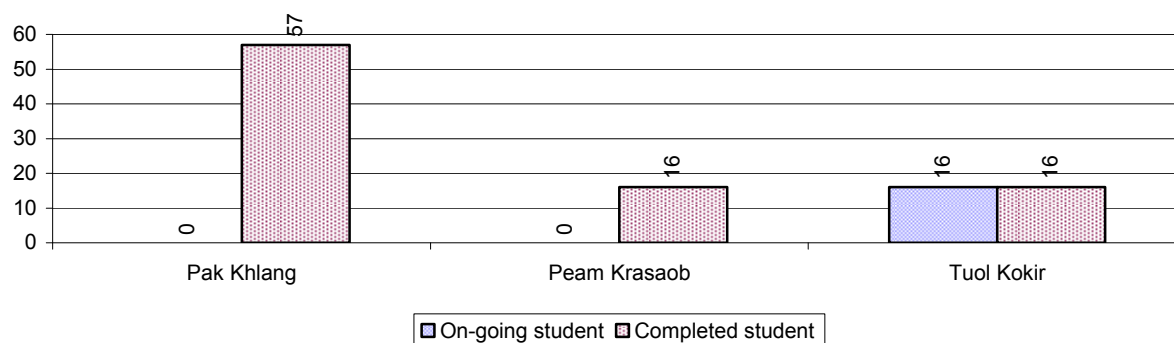
Literacy classes	Organized by:		Other Program(s)	Total
	PDoEYS	NGOs		
Number of On-going literacy classes	1 class(es)	0 class(es)	0 class(es)	1 class(e(s)
Number of literacy students in on-going classes	16 person(s)	0 person(s)	0 person(s)	16 person(s)
Completed literacy class(es)	4 classes	1 classes	0 classes	5 classes
Number of literacy students that have completed literacy classes	73 person(s)	16 person(s)	0 person(s)	89 person(s)
Number of students that passed	71 person(s)	16 person(s)	0 person(s)	87 person(s)

### 3.1.18 Number of on-going and completed Literacy Classes, by Commune, in 2008





### 3.1.19 Students of on-going & completed Literacy Classes, by Commune, in 2008

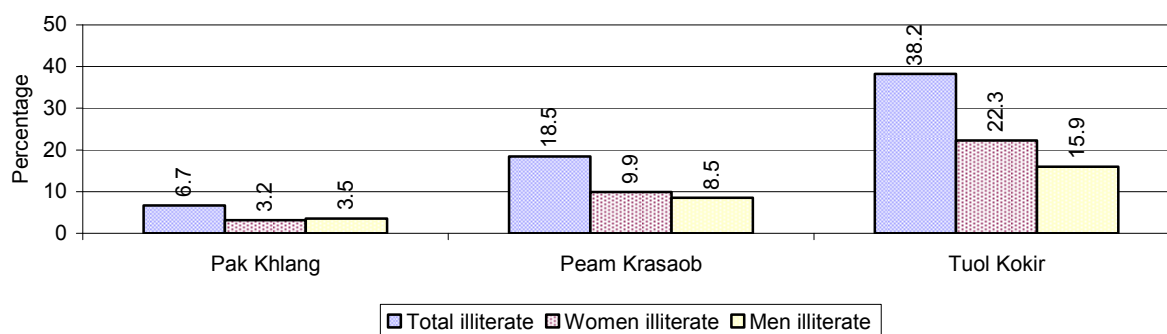


### 3.1.20 Percentage of illiterate People between 15-60, over 3 years

Illiteracy Status	2006 %	2007 %	2008	
			%	Number
Illiterate people, 15-60 years old	14%	13%	10%	905 person(s)
Illiterate females, 15-60 years old	8%	7%	5%	468 person(s)
Illiterate people, 15-17 years old	11%	4%	8%	88 person(s)
Illiterate females, 15-17 years old	7%	1%	3%	32 person(s)
Illiterate people, 18-24 years old	14%	5%	7%	140 person(s)
Illiterate females, 18-24 years old	6%	3%	3%	67 person(s)
Illiterate people, 25-60 years old	15%	19%	12%	677 person(s)
Illiterate females, 25-60 years old	9%	10%	7%	369 person(s)

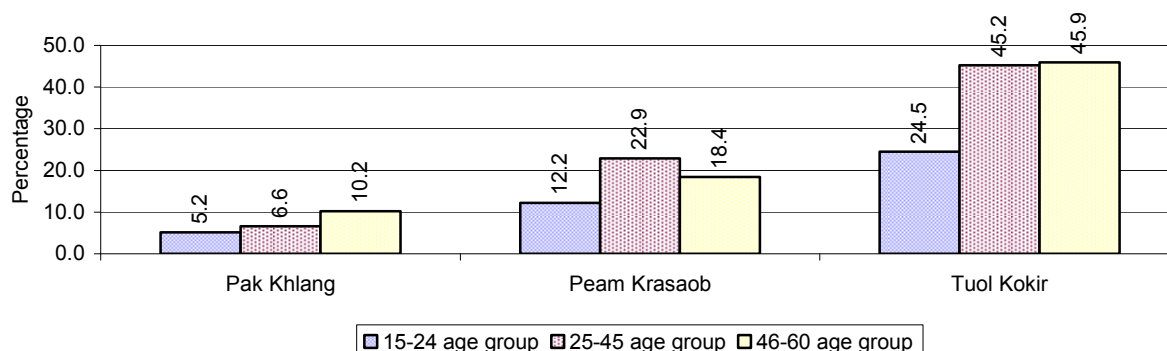
**Note:** Percentage is calculated on the basis of number of people in age each group.

### 3.1.21 Percentage illiterate People among 15-60 yrs old, by Commune, in 2008



**Note:** Percentages are calculated on the basis of number of people in that age group.

### 3.1.22 Percentage illiterate People for 15-24 yrs, 25-45 yrs and 46-60 yrs, by Commune, in 2008



**Note:** Percentage of illiterate people in each age group is calculated on the basis of number of people in that age group.

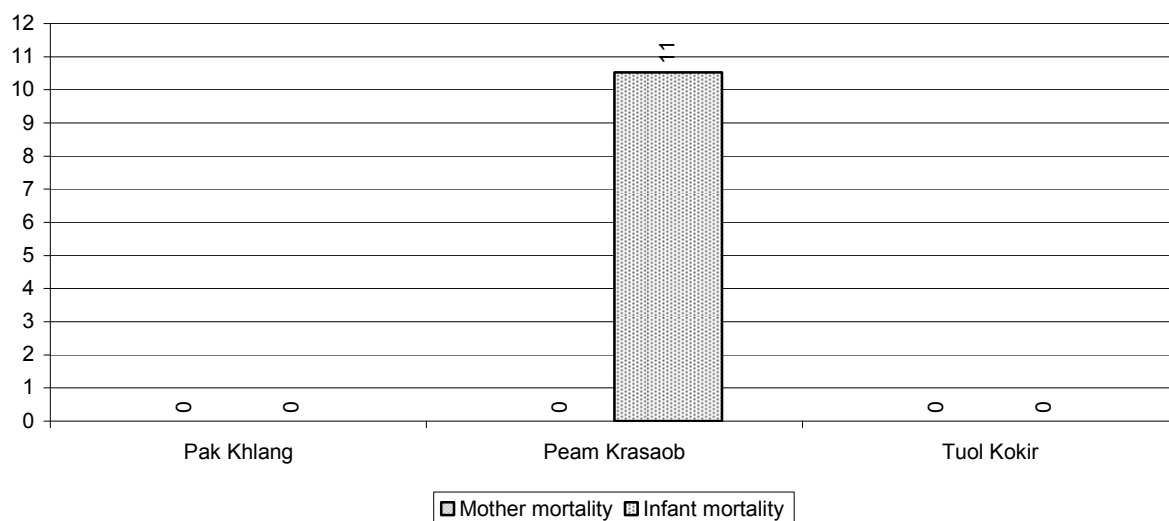
## 3.2 Health

### 3.2.1 Health Situation of Women and Children, over 3 years

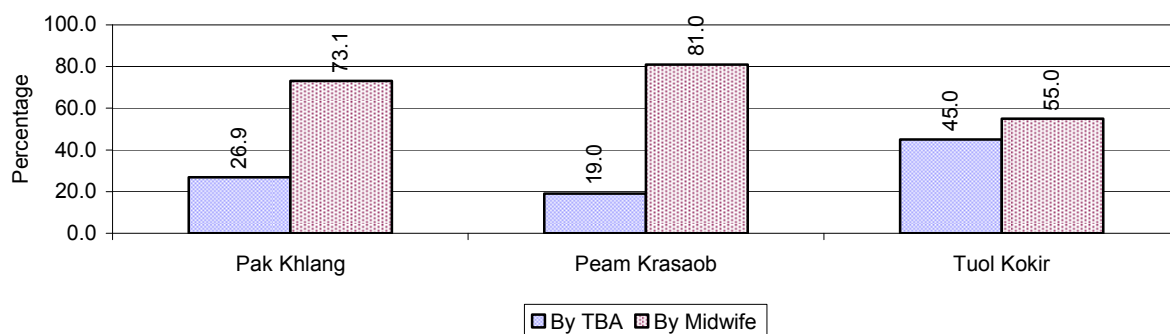
Description	2006	2007	2008
Number families with a birth during the year	235 families	201 families	201 families
Number of women who had their baby delivered by a TBA	11 person(s)	50 person(s)	56 person(s)
Percentage of women who had their baby delivered by a TBA	5 %	25 %	28 %
Number of women who had their baby delivered by a midwife	224 person(s)	151 person(s)	145 person(s)
Percentage of women had their baby delivered by a midwife	95 %	75 %	72 %
Number of mothers who died within 1 month of giving birth	1 person(s)	0 person(s)	0 person(s)
Mothers who died within 1 month of giving birth per 100,000 families having a delivery	426	0	0
Number of infants born during the year	239 person(s)	201 person(s)	201 person(s)
Number of Infants who died within 1 month	1 person(s)	1 person(s)	2 person(s)
Infants mortality within 1 month per 1,000 births	4	5	10
Number of children who died below the age of 5.	7 person(s)	0 person(s)	0 person(s)
Number of infants, aged 9-12 months, born during the year	170 person(s)	154 person(s)	138 person(s)
Nr. infants, aged 9-12 months, not receiving full immunization	27 person(s)	12 person(s)	8 person(s)
% of 9-12 months infants, not receiving full immunization	16 %	8 %	6 %

**Note:** TBA = Traditional Birth Attendant

### 3.2.2 Mothers dying within 0 days to 1 month of giving Birth and Infants dying within 1 month in 2008, by Commune

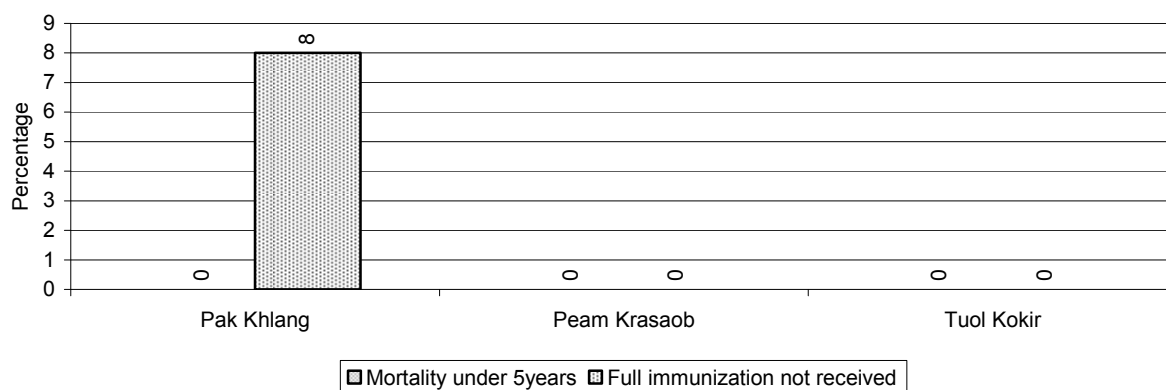


### 3.2.3 Percentage of Women delivering with a TBA or Midwife, by Commune



**Note:** Calculated as a percentage of total deliveries

### 3.2.4 Percentage of Children dying below 5 & of 9-12 months not receiving full Immunization, by Commune, in 2008



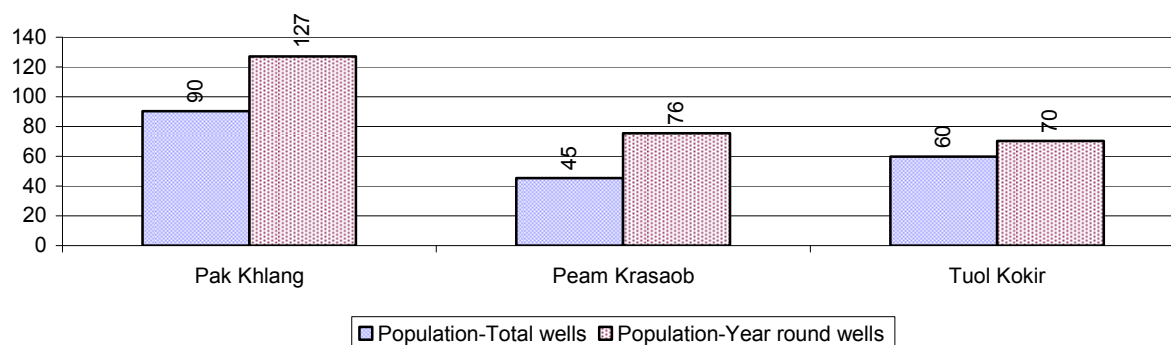
**Note:** Mortality rate calculated as a percentage of the total 5 year old population. Lack of immunization received calculated as a percentage of the total number 9-12 months olds there are

## 3.3 Water and Sanitation

### 3.3.1 Number of different types of Wells over 3 years

Type of wells	Number of wells by year		
	2006	2007	2008
<i>Total number of pumped or mixed wells</i>	37	29	73
Year-round usable pumped or mixed wells	25	12	56
Dry season unusable pump or mixed wells	12	17	17
Pump or mixed wells needing repair/rehabilitation	3	2	10
<i>Total number of ring wells</i>	93	86	105
Year-round usable ring wells	68	55	70
Dry season unusable ring wells	25	31	35
Ring wells needing repair/rehabilitation	14	14	20
<i>Total number of unprotected dug wells</i>	88	108	125
Year-round usable unprotected dug wells	81	95	110
Dry season unusable unprotected dug wells	7	13	15

### 3.3.2 Ratio of People to Wells, by Commune, in 2008

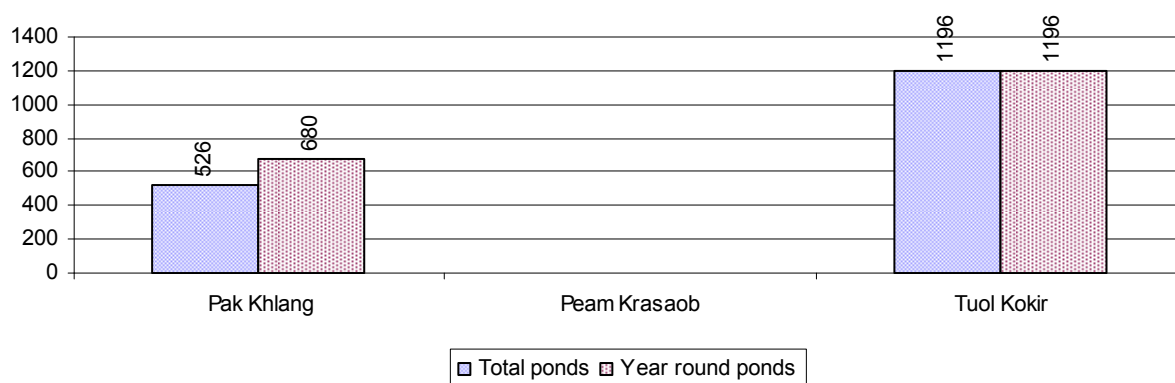


**Note:** Year-round wells excluding unprotected wells

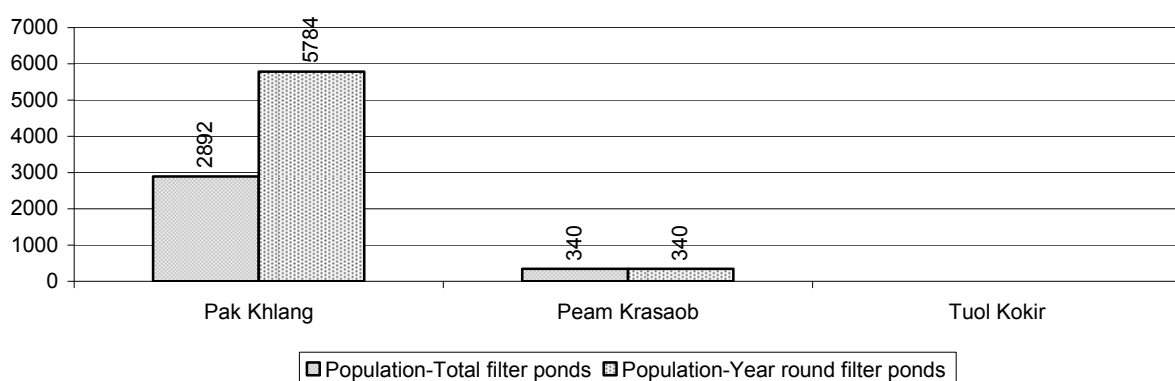
### 3.3.3 Potable Ponds over 3 years

Type of Pond	2006	2007	2008
Total number of normal-type ponds	8 pond	11 pond	23 pond
Year-round usable normal-type ponds	5 pond	7 pond	18 pond
Dry season unusable normal-type ponds	3 pond	4 pond	5 pond
Normal-type ponds needing repair/rehabilitation	4 pond	3 pond	2 pond
Total number of filter ponds	2 pond	2 pond	8 pond
Year-round usable filter ponds	2 pond	2 pond	6 pond
Filter ponds, dry season unusable	0 pond	0 pond	2 pond
Filter ponds needing repair/rehabilitate	0 pond	2 pond	2 pond

### 3.3.4 Ratio of People to normal Ponds, by Commune in 2008



### 3.3.5 Ratio of People to Filter Ponds, by Commune, in 2008

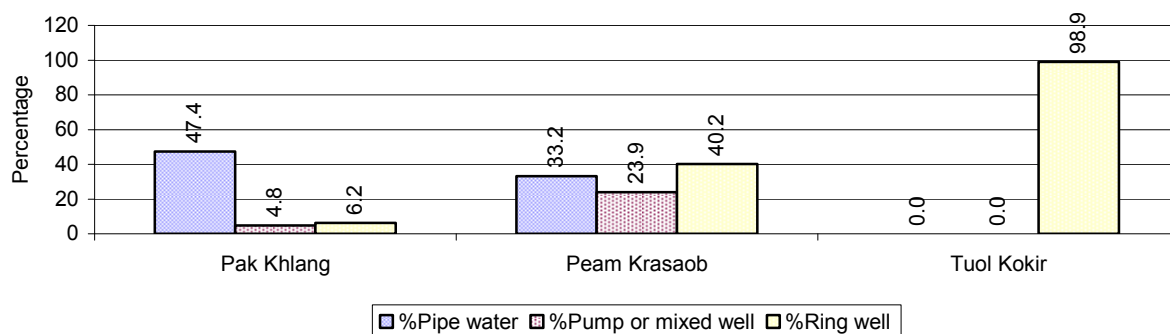


### 3.3.6 Source of potable Water for Households, over 3 years

Water sources	2006	2007	2008	
	%	%	%	Number
Families using water from purification system	10%	33 %	41 %	1,122 families
Families using water from pump, mixed wells	23%	14 %	6 %	176 families
Families using water from ring wells and open dug wells	39%	23 %	19 %	528 families
Families using water from pond	2%	2 %	1 %	39 families
Families using water from rain water storage	2%	13 %	15 %	407 families
Families using water from rivers, lakes, natural ponds and reservoirs	24%	15 %	17 %	461 families

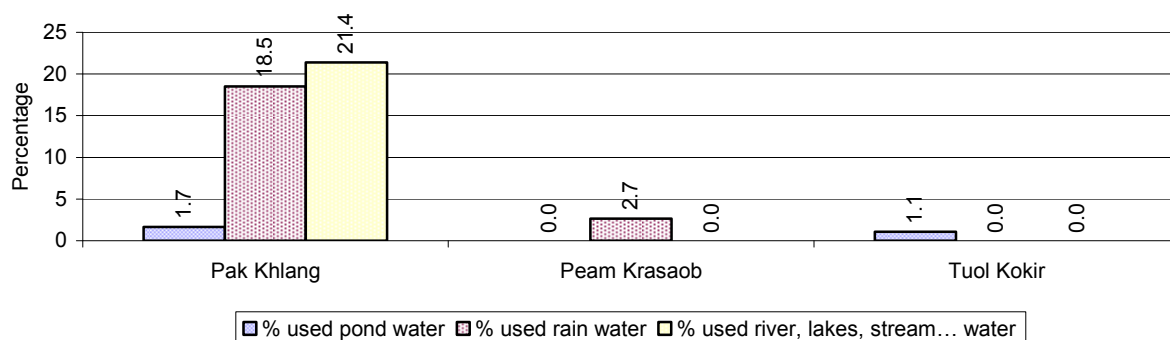
**Note:** Calculated as a percentage of the total number of families.

### 3.3.7 Percentage Families using different Water Sources, by Commune, in 2008



**Note:** Calculated as a percentage of the total number of families in each commune

### 3.3.8 Percentage Families using Water from Rain Water Storage, Ponds and natural Sources (rivers/lakes/natural ponds/reservoirs), by Commune, 2008



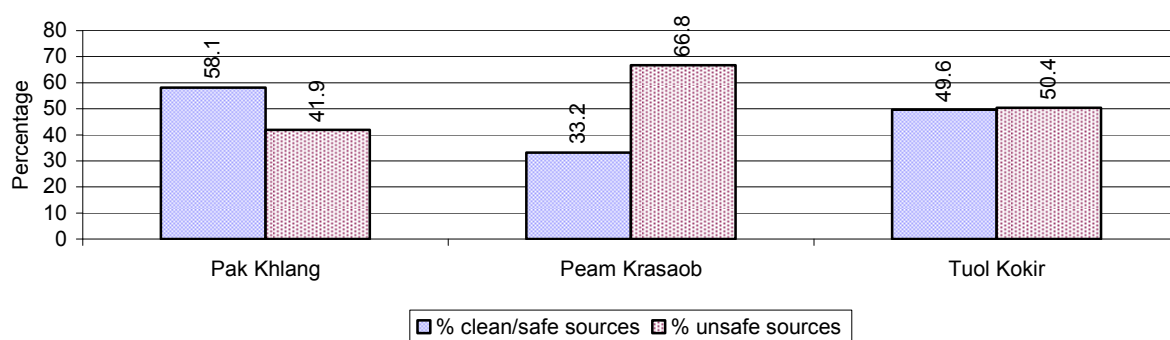
**Note:** Calculated as a percentage of the total number of families in each commune

### 3.3.9 Drinking Water Sources in the dry Season over 3 years

Percentage Families that get drinking water from:	2006	2007	2008	
	%	%	%	Number
from clean/safe sources	38 %	71 %	55 %	1,490 families
from unsafe sources	62 %	29 %	45 %	1,243 families

**Note:** Calculated as a percentage of the total number of families.

### 3.3.10 Percentage Families using safe and unsafe Water Sources in the dry Season, by Commune, in 2008



**Note:** Calculated as a percentage of the total number of families in each commune.

### 3.3.11 Drinking Water Purification by Households, over 3 years

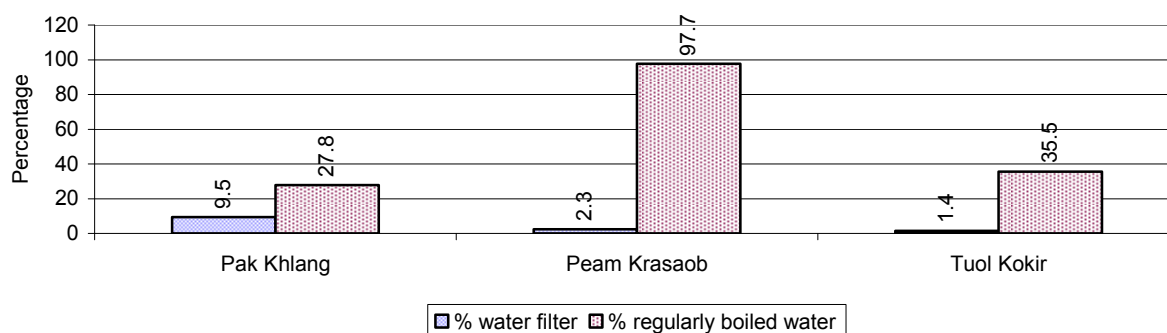
This table shows the different ways families make water safe for drinking.

Families, who:	2006	2007	2008	
	%	%	%	Number
Filter water for drinking	4%	7%	8 %	215 families
Boil water for drinking	16%	29%	36 %	991 families

**Note:** Calculated as a percentage of the total number of families

### 3.3.12 Percentage Families filtering Water or regularly boiling Water, by Commune, in 2008

This graph shows the different ways families make drinking water safe.



**Note:** Calculated on as a percentage of the total number of families in each commune.

### 3.3.13 Families' access to Water, over 3 years

Families access to water	2006	2007	2008	
	%	%	%	Number
Families with water at home or in less then 150m	35%	41%	56 %	1,532 families
Families with water 150m or more away from home	15%	16%	21 %	573 families

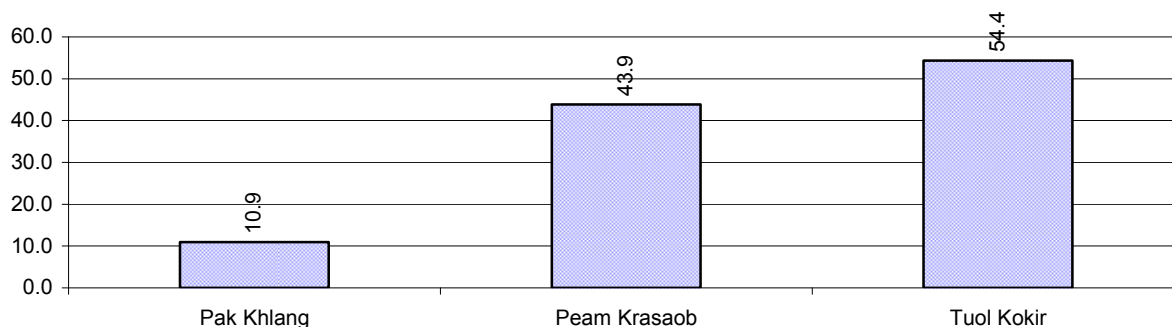
**Note:** Calculated as a percentage of the total number of families

### 3.3.14 Ratio of people to Latrines over 3 years

Description	2006	2007	2008	
	Ratio	Ratio	Ratio	Number
Ratio of people to latrines	13.5	20.3	12.7	1,113.0

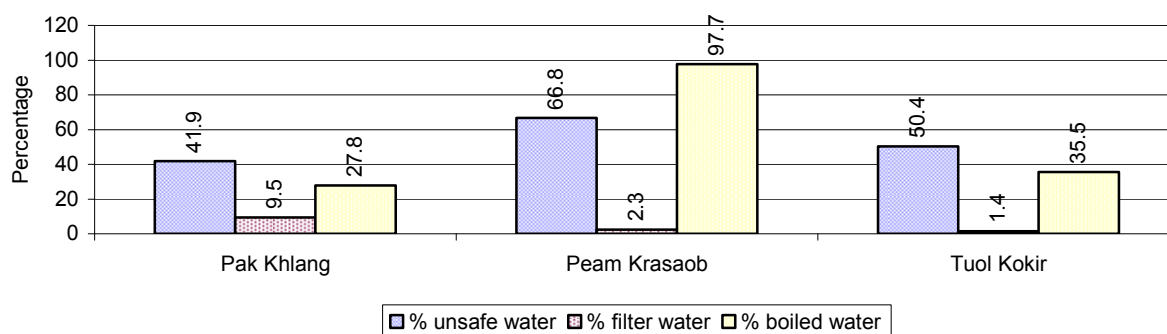
**Note:** Ratio calculated by dividing the number of houses with latrines by the total population

### 3.3.15 Ratio of People to Latrines, by Commune, in 2008



**Note:** Ratio calculated by dividing the number of houses with latrines by the total population in a Commune.

### 3.3.16 Percentage of Families drinking boiled, filtered or unsafe Water, by Commune, in 2008



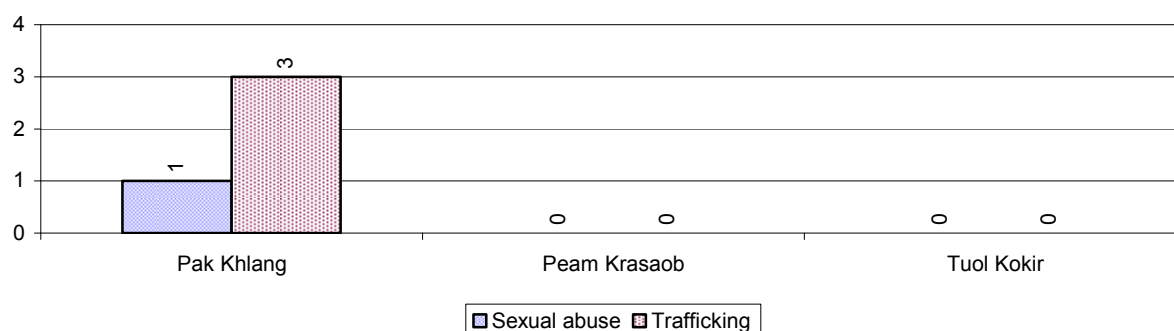
**Note:** Calculated as a percentage of the total number of families in each commune.

## 3.4 Vulnerable groups

### 3.4.1 Vulnerable Groups in need of special Protection over 3 years

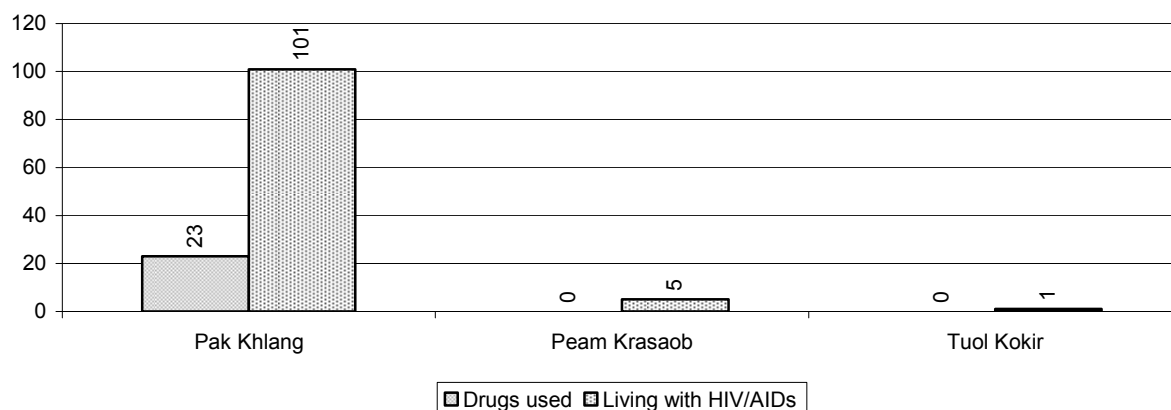
Vulnerable groups	2006	2007	2008
Victims of sexual abuse	0 person(s)	1 person(s)	1 person(s)
Victims of human trafficking	0 person(s)	3 person(s)	3 person(s)
Families with family member(s) using drugs	38 families	36 families	23 families
Families with family member(s) living with HIV/AIDS	57 families	82 families	107 families
Children under 18 yrs old whose parent died of AIDS	34 person(s)	38 person(s)	58 person(s)
Orphaned/abandoned children under 18 yrs old (all cases)	815 person(s)	58 person(s)	51 person(s)
Elderly persons without guardian	7 person(s)	19 person(s)	7 person(s)
Disabled people able to earn an income	8 person(s)	12 person(s)	18 person(s)
Disabled people unable to earn an income	2 person(s)	8 person(s)	8 person(s)
Disabled people under 18 yrs old	1 person(s)	5 person(s)	4 person(s)
Victims of natural disasters	210 families	34 families	79 families
Victims of land mines and unexploded weapons	0 person(s)	0 person(s)	0 person(s)

### 3.4.2 Registered Victims of sexual Abuse or Trafficking, by Commune, for 2008

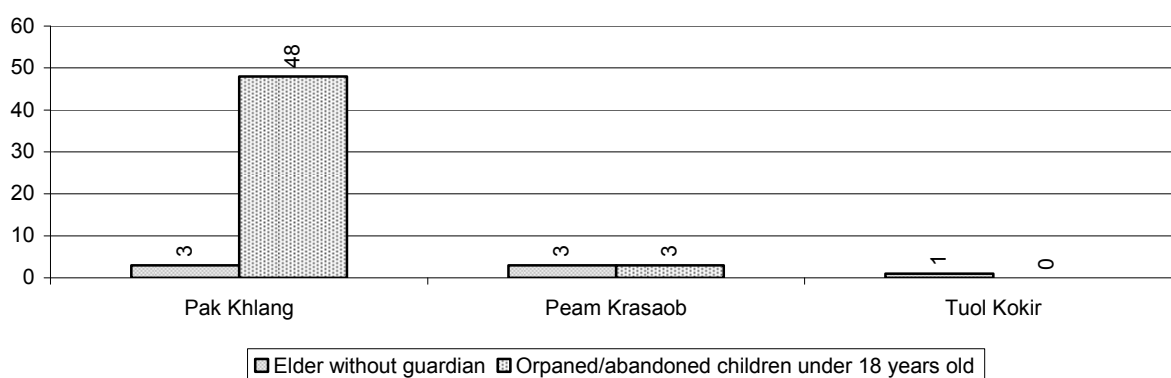




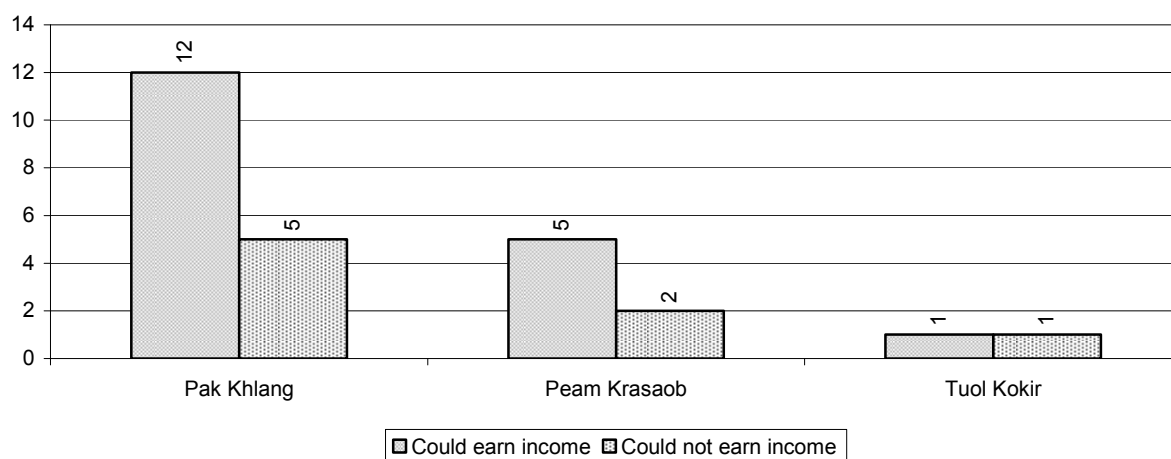
### 3.4.3 Registered Families with Member(s) using Drugs or living with HIV/AIDS, by Commune, for 2008



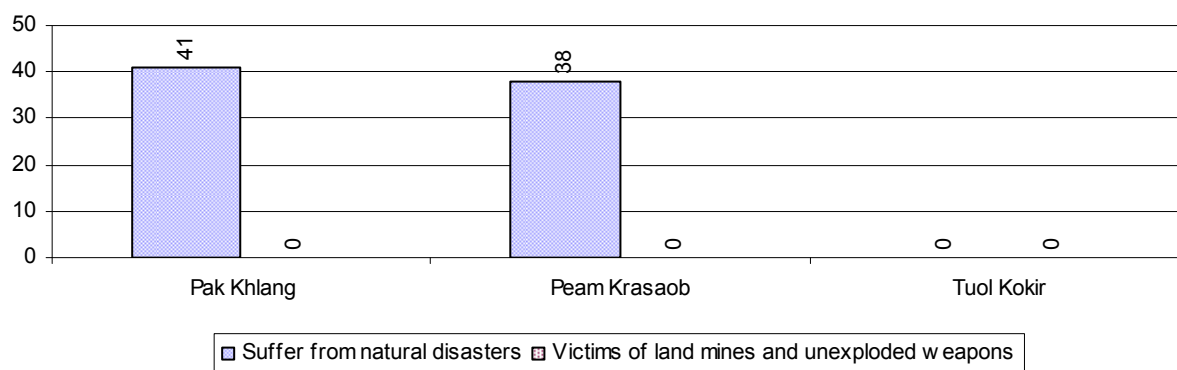
### 3.4.4 Elderly Persons without a Guardian and orphaned/abandoned Children under 18 years old, by Commune, for 2008



### 3.4.5 Number of disabled People who could or could not earn an Income, by Commune, for 2008



### 3.4.6 Number of Families who suffered from natural Disasters, and number of Victims of Land Mines and unexploded Weapons, by Commune, in 2008



## 3.5 Migration

### 3.5.1 Migration over 3 years

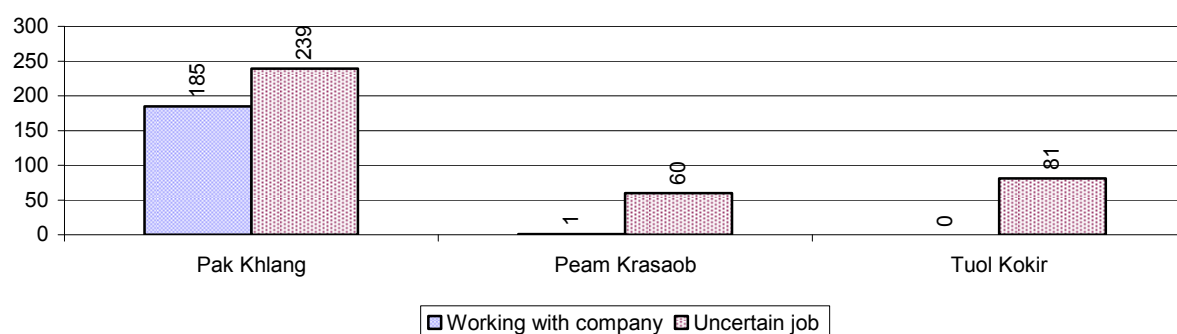
Description	2006	2007	2008
Number of families permanently in-migrated	29 families	52 families	24 families
Total number of people	140 person(s)	219 person(s)	105 person(s)
Total number of female	69 person(s)	107 person(s)	56 person(s)
Number of families permanently out-migrated	32 families	83 families	54 families
Total number of people	148 person(s)	316 person(s)	240 person(s)
Total number of female	74 person(s)	147 person(s)	122 person(s)
Number of families staying temporarily	136 families	121 families	185 families
Total number of people	395 person(s)	380 person(s)	869 person(s)
Total number of female	191 person(s)	168 person(s)	512 person(s)

### 3.5.2 Job Migration

Description	2006	2007	2008
Number of people migrated to work with company/factory	3%	3%	2%
Number of people migrated to work, but have uncertain jobs	3%	4%	5%

**Note:** Calculated as a percentage of the total population of 18-60 year olds

### 3.5.3 Number of People working outside their home Villages in a Company/Factory or with an uncertain Job in 2008

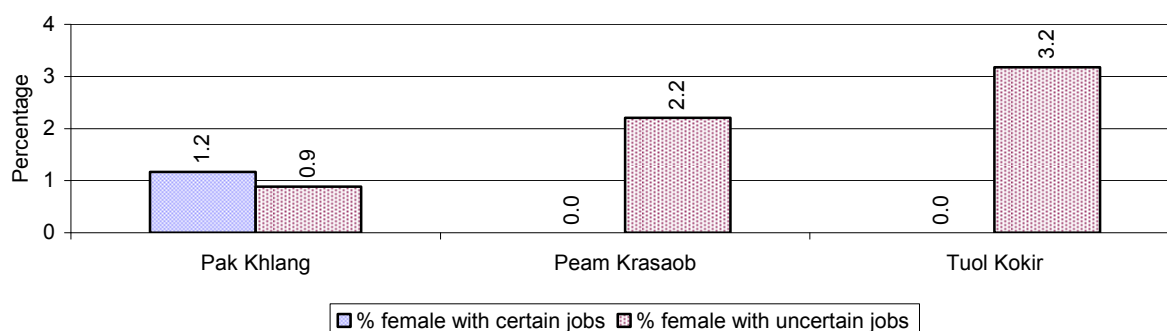


### 3.5.4 Female migration over 3 years

Description	2006 %	2007 %	2008	
			%	Number
Total number of migrants	3.3%	3.9%	4.0%	566 person(s)
Number of female migrants	1.5%	2.0%	2.2%	305 person(s)
Total number of migrants, who go to work with company/factory (with certain jobs)	1.5%	1.5%	1.3%	186 person(s)
Number of female migrants with certain jobs	0.7%	0.9%	1.0%	135 person(s)
Total number of migrants with uncertain jobs	1.8%	2.4%	2.7%	380 person(s)
Number of female migrants with uncertain jobs	0.8%	1.1%	1.2%	170 person(s)

**Note:** Calculated as a percentage of the total population

### 3.5.5 Percentage female Migrants with certain and uncertain Jobs, by Commune, in 2008



**Note:** Calculated as a percentage of the total population of the commune

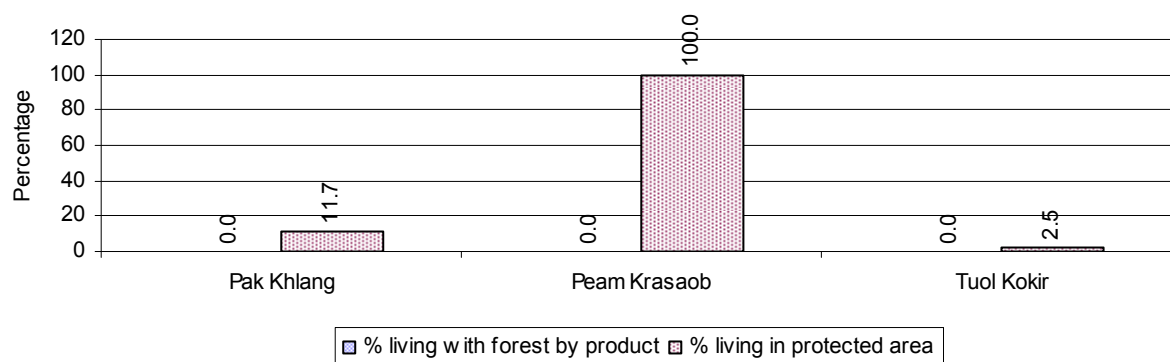
## 4 Natural Resources and Environment (NRE)

### 4.1 Families involved with NRE issues over 3 years

Description	2006 %	2007 %	2008	
			%	Number
Families living with forest by products	0 %	0 %	0 %	0 families
Families living in a protected area	12 %	16 %	20 %	560 families
Houses with access to garbage collection service	6 %	6 %	11 %	301 families
Families affected by environmental pollution	14 %	0 %	0 %	0 families
Families using chemical fertilizer	8 %	3 %	3 %	86 families
Families using chemical pesticide	6 %	4 %	3 %	85 families

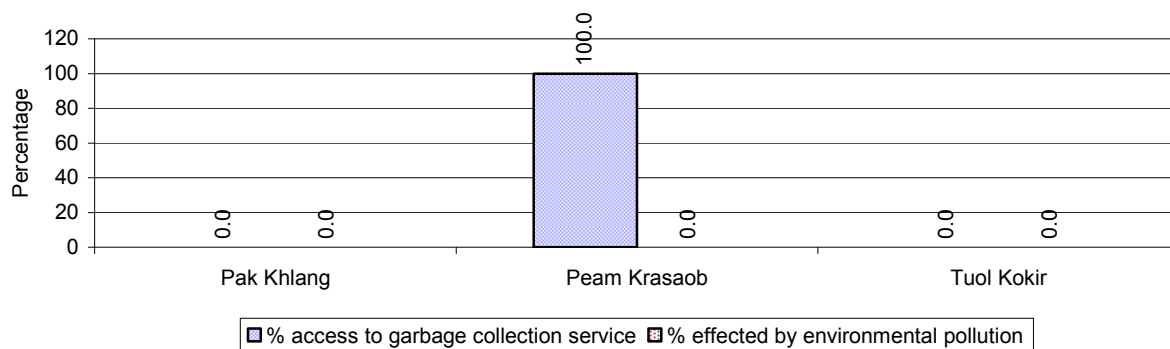
**Note:** Calculated as a percentage of the total number of families

#### 4.2 Percentage of Families involved with Natural Resource issues, by Commune, for 2008



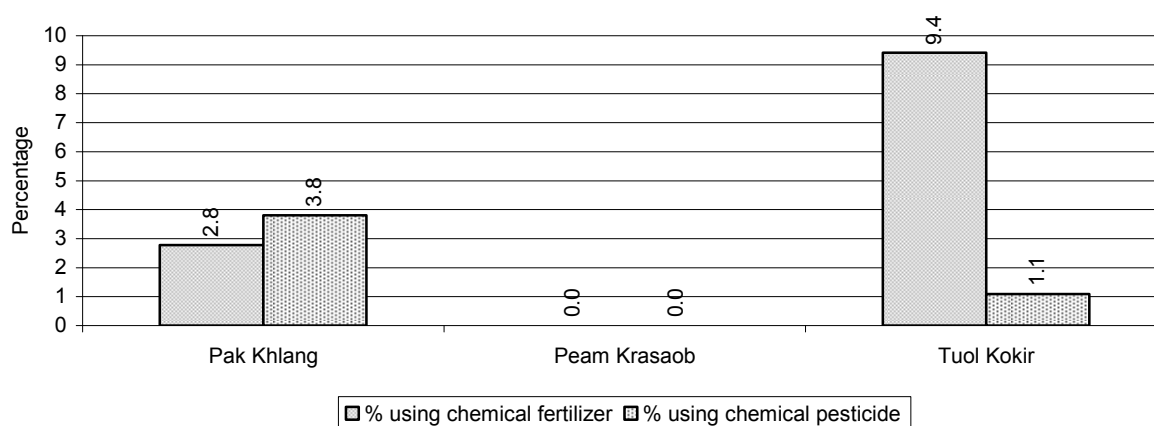
**Note:** Calculated as a percentage of the number of families in each commune

#### 4.3 Percentage Houses with access to Garbage collection and Families affected by environmental Pollution, by Commune, for 2008



**Note:** Garbage collection is calculated as a percentage of the total number of houses in each commune and families affected by environmental pollution is calculated as a percentage of the total number of families in each commune.

#### 4.4 Percentage Families using chemical Fertilizer and chemical Pesticides, by Commune, for 2008



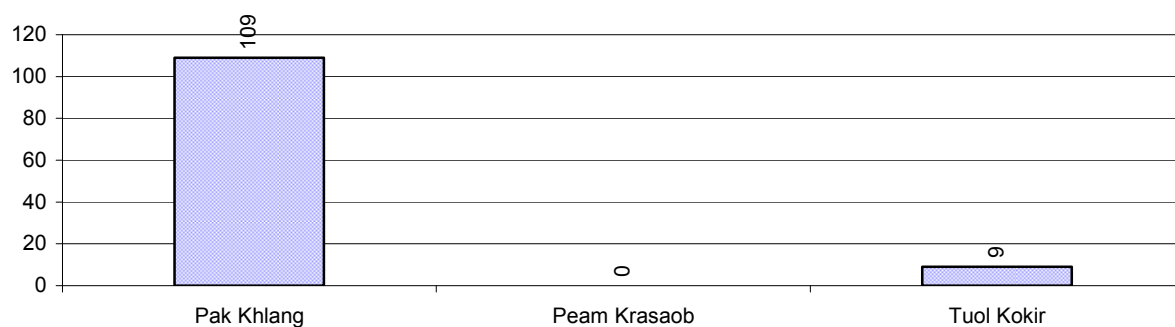
**Note:** Calculated as a percentage of the total number of families in each commune

## 5 Administration and Security

### 5.1 Birth Registration across 3 years

Description	2006	2007	2008
Number of infants to be registered	238 person(s)	200 person(s)	199 person(s)
Number of unregistered infants the year	55 person(s)	87 person(s)	118 person(s)
Percentage of infants unregistered	23 %	44 %	59 %

### 5.2 Number of unregistered Infants born in 2008, by Commune

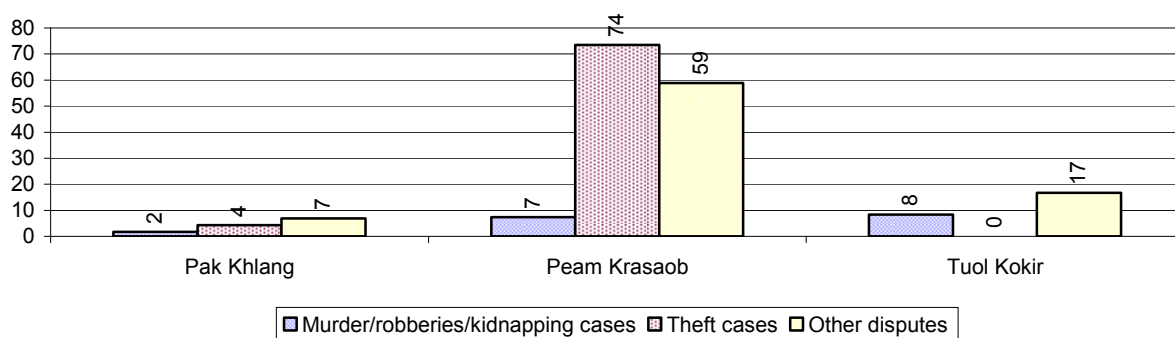


### 5.3 Registered criminal Cases over 3 years

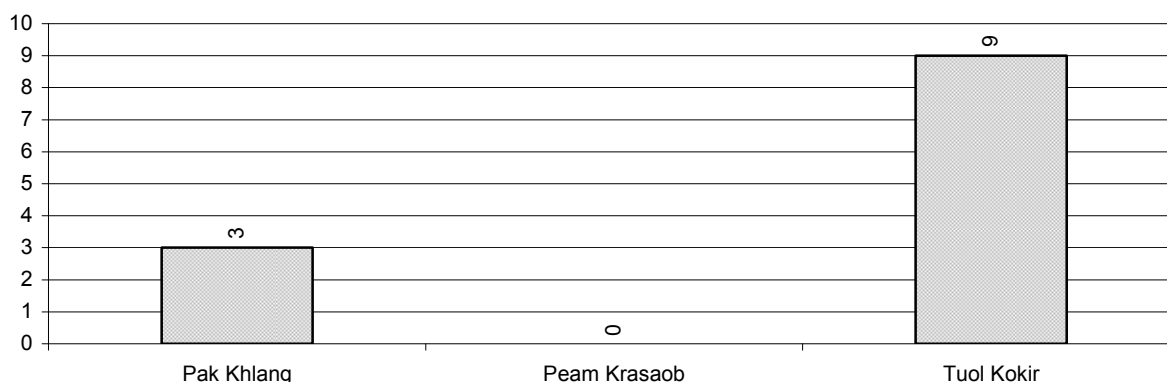
Description	2006	2007	2008
Murders, robberies and kidnapping cases	0 case(s)	1 case(s)	4 case(s)
Theft cases	21 case(s)	16 case(s)	15 case(s)
land dispute cases	24 case(s)	33 case(s)	12 case(s)
Other disputes cases	77 case(s)	106 case(s)	18 case(s)

**Note:** this reflects only registered criminal cases

### 5.4 Registered criminal Cases per 10,000 people, by Commune, for 2008



### 5.5 Number of registered Land Disputes, by Commune, in 2008

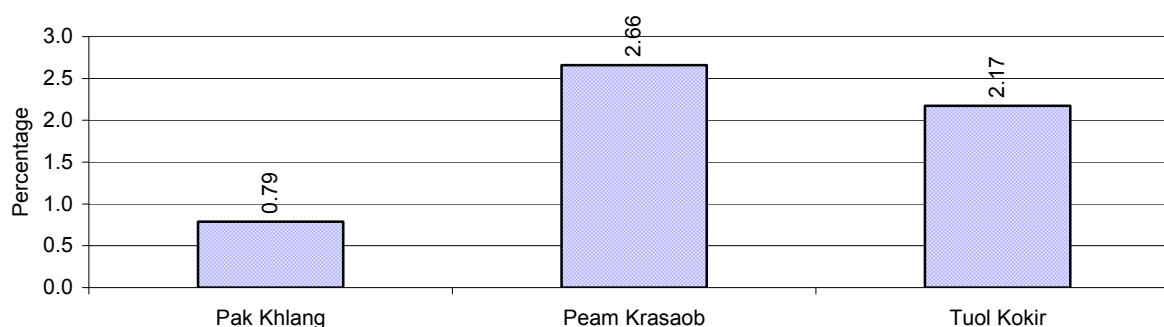


## 6 Gender

### 6.1 Registered Domestic Violence over 3 years

Description		2006	2007	2008
Families experiencing domestic violence		33 families	30 families	31 families(s)
% families experiencing domestic violence		1 %	1 %	1 %
Domestic violence cases reported by village chiefs		21 case(s)	31 case(s)	22 case(s)
Type	Physical violence	11 case(s)	21 case(s)	15 case(s)
	Sexual violence	2 case(s)	1 case(s)	1 case(s)
	Mental violence	4 case(s)	5 case(s)	5 case(s)
	Household economic violence	4 case(s)	4 case(s)	1 case(s)
Number of administrative decisions on domestic violence		13 case(s)	3 case(s)	8 case(s)
% of administrative decisions on domestic violence		62 %	10 %	36 %

### 6.2 Percentage of registered cases of Families experiencing domestic Violence, by Commune, in 2008



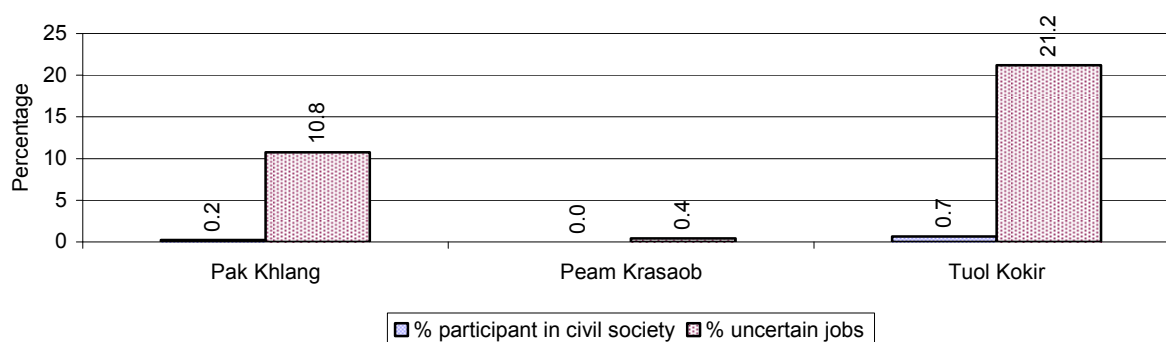
**Note:** Calculated as a percentage of the total number of families in each commune

### 6.3 Women's involvement over 3 years

Description	2006 %	2007 %	2008	
			%	Number
People participating in civil society	7%	1%	1%	75 person(s)
Women participating in civil society	3%	1%	0%	34 person(s)
People, 18-60 yrs, with uncertain/irregular jobs	18%	16%	19%	1,433 person(s)
Women, 18-60 yrs, with uncertain/irregular jobs	10%	7%	11%	803 person(s)

**Note:** Participation can be in NGOs, CBOs, credit groups, women's unions, parties and other civil society organizations. The first section is calculated as a percentage of the total population. The second section is calculated as a percentage of the total 18-60 year old population.

### 6.4 Percentage of Female Participants in Civil Society and of 18-60 year women with uncertain Jobs, by Commune, in 2008



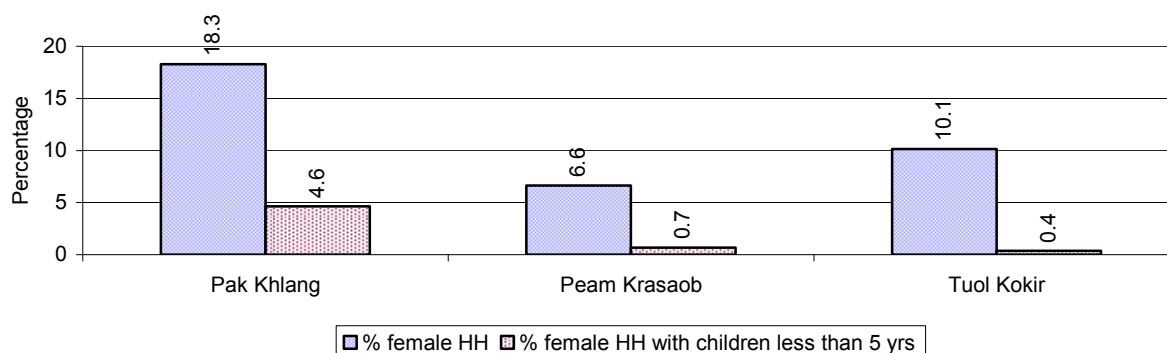
**Note:** Percentage of female participants in civil society is calculated as a percentage of the total population per commune. The percentage of 18-60 years old women with uncertain jobs is calculated as a percentage of the total 18-60 year old population per commune.

### 6.5 Female-headed Households over 3 years

Families with:	2006 %	2007 %	2008	
			%	Number
Households in which a woman is the family head	22%	28%	16%	442 families
Households in which a woman is the family head with children of less than 5 yrs	7%	9%	4%	103 families

**Note:** Calculated as a percentage of the total number of families

## 6.6 Percentage female-headed Households and with Children of less than 5 years old, by Commune, in 2008



**Note:** Calculated as a percentage of the total number of families in each commune  
HH: Headed Household

## 7 Indigenous People in the District

### 7.1 Ethnic Minorities in the District over 3 years

Race of indigenous	2006		2007		2008	
	# families	# population	# families	# population	# families	# population
Phnong	0 families	0 person(s)	0 families	0 person(s)	0 families	0 person(s)
Kouy	0 families	0 person(s)	0 families	0 person(s)	0 families	0 person(s)
Stieng	0 families	0 person(s)	0 families	0 person(s)	0 families	0 person(s)
Mil	0 families	0 person(s)	0 families	0 person(s)	0 families	0 person(s)
Kroal	0 families	0 person(s)	0 families	0 person(s)	0 families	0 person(s)
Thmorn	0 families	0 person(s)	0 families	0 person(s)	0 families	0 person(s)
Khaonh	0 families	0 person(s)	0 families	0 person(s)	0 families	0 person(s)
Tompouonn	0 families	0 person(s)	0 families	0 person(s)	0 families	0 person(s)
Charay	0 families	0 person(s)	0 families	0 person(s)	0 families	0 person(s)
Kroeung	0 families	0 person(s)	0 families	0 person(s)	0 families	0 person(s)
Kavet	0 families	0 person(s)	0 families	0 person(s)	0 families	0 person(s)
Saouch	0 families	0 person(s)	0 families	0 person(s)	0 families	0 person(s)
Lun	0 families	0 person(s)	0 families	0 person(s)	0 families	0 person(s)
Kachak	0 families	0 person(s)	0 families	0 person(s)	0 families	0 person(s)
Praov	0 families	0 person(s)	0 families	0 person(s)	0 families	0 person(s)
Others	0 families	0 person(s)	0 families	0 person(s)	0 families	0 person(s)
<b>Total</b>	0 families	0 person(s)	0 families	0 person(s)	0 families	0 person(s)

**Note:** "Others" refer to other ethnic groups which are not listed.

### 7.2 Other Minorities in the District over 3 years

Minority	2006		2007		2008	
	# families	# population	# families	# population	# families	# population
Khmer Islamic	47 families	244 person(s)	3 families	15 person(s)	3 families	15 person(s)
Vietnamese	60 families	245 person(s)	33 families	134 person(s)	33 families	127 person(s)
Laos	0 families	0 person(s)	0 families	0 person(s)	0 families	0 person(s)

**Note:** Number of indigenous and minority population are additional data, so some village may not recorded.



## **SECTION C: PLANS AND PROJECTS**



## 8 Priorities and Plans

### 8.1 Priorities of Commune Councils for 2009 in the District by Sector

The District Priority Activity Matrix (DPAM) data are taken from the CDPD. The DPAM is used for the District Integration Workshop (DIW), to show what kind of projects the commune has proposed in their Commune Investment Plan (CIP) for 2009. Donors, departments and other agencies then consider which projects they want to support and which projects they are not interested in. This results in Temporary Agreements between the Commune Council and the Supporter (NGO, Department, private donor, etc), as shown in table 8.2

No.	Project Name	Pak Khlang	Peam Krasaob	Tuol Kokir	Req.Project
		90501	90502	90503	Total
Economic					
1	Compost fertilizer training			1 training	1
2	Chemical and pesticide application training	2 training		1 training	2
3	Mixed farming system training		20 person		1
4	Soil improvement techniques training			1 training	1
5	Subsidiary cropping technique training			40 family	1
6	Mushroom growing training			1 training	1
7	Natural rice cultivation practice	2 training		1 training	2
8	Animal raising training	7 training			1
9	Rice seed request			400 Kg	1
10	Sow for raising request	140 Head			1
11	Pesticide request			2 Time	1
12	Vegetable seeds request			40 family	1
13	Chicken request	2100 Head			1
14	Livestock raising request		350 Head		1
15	Family fish pond construction		100 place		2
16	Fish raising training		20 person		1
17	Fish fingerling request	8000 fingerling			1
18	Fish processing training		20 person		1
19	Snail/Shellfish raising technique training		130 family		1
20	Boat landing place construction/repair			1 place	1
21	Road maintenance committee			4 Team	1
22	Laterite/natural gravel road construction	25000 m			1
23	Culvert construction		2 place		2
24	Bridger construction		1000 m	1 place	4
25	Mass concrete road construction	686 m			2

District Data Book 2009: District Profile

No.	Project Name	Pak Khlang	Peam Krasaob	Tuol Kokir	Req.Project
		90501	90502	90503	Total
26	Port construction		1 place		1
27	Earth road repairing			4 km	1
28	Laterite/natural gravel road repairing	6700 m	800 m		2
29	Culvert repairing	21 place			1
30	Canal construction			2 km	1
31	Dam construction		1000 m	0 km	2
32	Spillway construction		500 m		1
33	Irrigation pond construction		2 place		1
34	Canal repairing		1 place	1 place	2
35	Livestock bank			20 family	1
36	Saving group association strengthening		5 Team		1
37	Development of natural tourism area		20 place	20 place	3
<b>Social</b>					
1	Family planning	7 training			1
2	Reproductive health awareness education		25 person		1
3	Reproductive health training for VHV	14 training			1
4	HIV/AIDS awareness education	14 time			1
5	Health/hygiene education for local people	7 training			1
6	Sexual worker health education campaign	7 training			1
7	Leaflets and posters distribution			1 training	1
8	Children immunization provision	14 time			1
9	Health local service provision for women-children			12 Time	1
10	Health network creation/strengthening			2 time	1
11	TBA training			8 person	1
12	Latrine construction	70 building	10 place		2
13	Village health post construction	1 building	1 building	1 person	3
14	Water supply		2000 m		1
15	Ring wells construction		6 place		1
16	Ponds construction		1 place		1
17	Literacy class	7 class	20 person	4 class	3
18	Literacy teacher support	7 person			1
19	School building	5 building	2 building		2
20	Kindergarten school construction/repair	5 building	2 building	2 room	4
21	Pre-school teacher/kid keeper support			2 person	1
22	Teacher/volunteer teacher need	14 person		1 time	2

District Data Book 2009: District Profile

No.	Project Name	Pak Khlang	Peam Krasaob	Tuol Kokir	Req.Project
		90501	90502	90503	Total
23	Education for all dissemination	14 time			1
24	Parent's school support committee			1 time	1
25	Scholarship provision to poor pupils			4 person	1
26	Dormitory construction for teacher/pupils	5 person	2 place		2
27	Vocational training	7 training			1
28	Skill training project			4 class	1
29	School supporting committee formation/operation			1 time	1
30	Food/materials support to orphan	21 Cupboard			1
31	Orphan center construction	1 building			1
32	Vulnerable people aid/support			4 person	1
<b>NREM</b>					
1	Environmental awareness and law education	14 time			1
2	Fishery law education			1 training	1
3	Forestry law education			1 training	1
4	Flooded forest rehabilitation/planting		20 ha	4 place	2
5	Illegal fishing prevention		40 Tree		1
6	Strengthening fishery community		10 person	3 place	2
7	Flooded forest clearance prevention			4 Team	1
8	Fishery community boundary identification			25 piece	1
9	Mangrove forest protection strengthening			20 family	1
10	Community forestry activities support			1 place	1
11	Waste dumping creation/improvement	140 Garbage bin	1 place		3
12	Public rubbish bin sitting		10 Garbage bin		1
13	Waste collection service creation/improvement	7 car			2
14	Market/urban place sanitation control		3 training		1
15	Waste control measurement	7 place			1
<b>Administration and Security</b>					
1	Civil registration encouragement	7 time			1
2	Human rights and law training			4 training	1
3	Village/commune data collection strengthening	60 day			1
4	Project implementation/administration strengthening		1000 Tree		2
5	Commune office construction/renovation		1 building		1
6	Village office construction/renovation			1 building	1
7	Transportation mean requesting		1 set		1
8	Commune yard earth elevation		150 m		1

District Data Book 2009: District Profile

No.	Project Name	Pak Khlang	Peam Krasaob	Tuol Kokir	Req.Project
		90501	90502	90503	Total
9	Land law dissemination			1 training	2
10	Provision of land titles/certificates	1326 doc			1
11	Land registration dissemination/enforcement			1 time	1
12	Village/commune border identification			1 time	1
13	Public land takeover prevention	21 time			1
14	Land conflict resolution committee strengthening	7 time			1
15	Forest protection boundary identification	3 time			1
16	Social land concession project	3 place		1 place	2
17	People guard activities formation/strengthening			10 case	2
18	Drug and related law education	4 training			1
19	Local security strengthening			60 time	1
20	Gambling control/elimination activation	4 time			1
21	Drug business/use prevention	4 time			1
22	Local police capacity building/strengthening			5 person	1
23	Law/regulation dissemination	7 training			1
24	Information board provision/creation/built		2 Info-board		1
<b>Gender</b>					
1	Gender mainstreaming among local people			32 training	1
2	Tailor skill training	2 training	1 training	1 training	3
3	Lady makeup/hair dressing skill training		1 training		2
4	Law against domestic violence dissemination	7 training		1 training	2
5	Law against trafficking dissemination	7 training			1

**Source:** CDPD – District Priority Matrix

## 8.2 Temporary Agreements by Commune, for 2009<sup>2</sup>

At the District Integration Workshop (DIW) the Supporters (donors, agencies, private donors, NGOs, etc.) identify which projects/activities they would like to support or they put forward their own projects to be implemented in a particular commune. Once there is agreement between Commune Councils and Supporters on specific projects a **Temporary Agreement** is signed by the commune and the Supporter to show their mutual commitment to the identified projects/activities.

It is important to keep in mind that such Temporary Agreements do not necessarily result in implementation.

### 8.2.1 Temporary Agreements for 2009 as per DIW 2008 for Commune: Pak Khlang

Commune GIS	Commune	Temporary Agreements				Supporter	Fundi ng Sour ce	Listed in CIP befor DIW
		Project Name	Quantity	Unit	Est.Cost (K.Riels)			
Economic								
90501	Pak Khlang	Community committee training on marketing and community production chain	1	Course/year	1200	WildAid		<input type="checkbox"/>
90501	Pak Khlang	Bird bio-safety raising technique promotion (technical supervision and facilitation)	6	Time	1057.68	CARE International in Cambodia		<input type="checkbox"/>
90501	Pak Khlang	Pesticide spraying support	1	Time	0	Department of Agriculture Forestry and Fisheries		<input type="checkbox"/>
90501	Pak Khlang	Livestock vaccinating and curing support	1	Course/year	0	Department of Agriculture Forestry and Fisheries		<input type="checkbox"/>
90501	Pak Khlang	Livestock raising technique training and seed provision	1	Time	0	Department of Agriculture Forestry and Fisheries	PIF	<input type="checkbox"/>
90501	Pak Khlang	Small fund support responding to community needs	1	time	8000	WildAid		<input type="checkbox"/>
90501	Pak Khlang	Cash management training workshop	1	Course/year	1200	WildAid		<input type="checkbox"/>
Social								
90501	Pak Khlang	Breastfeeding world week organizing	1	Time	0	CARE International in Cambodia		<input type="checkbox"/>
90501	Pak Khlang	TB education at secondary school	1	Time	0	Department of Health		<input type="checkbox"/>
90501	Pak Khlang	Malaria, HIV/AIDS, sexual disease, tuberculosis, bird flue and nutrition education	1	Time	0	CARE International in Cambodia		<input type="checkbox"/>

<sup>2</sup> Not all the data from the CDPD has been translated to English, this has resulted in some cells in the TA tables being blank.

District Data Book 2009: District Profile

Commune GIS	Commune	Temporary Agreements				Supporter	Funding Source	Listed in CIP before DIW
		Project Name	Quantity	Unit	Est.Cost (K.Riels)			
90501	Pak Khleng	Peer education training to couple who is knowledgeable on reproductive health and HIV/AIDS	1	Time	0	CARE International in Cambodia		<input type="checkbox"/>
90501	Pak Khleng	Tuberculosis cases searching and monitoring	1	Time	0	Department of Health		<input type="checkbox"/>
90501	Pak Khleng	Support monthly meeting of couple those are knowledgeable on reproduction health, HIV/AIDS	4	Time	0	CARE International in Cambodia		<input type="checkbox"/>
90501	Pak Khleng	Impregnated mosquitoes net distribution and re-impregnating	2	Time	0	Department of Health		<input type="checkbox"/>
90501	Pak Khleng	Health committee quarterly meeting on emergency system	4	Time	0	CARE International in Cambodia		<input type="checkbox"/>
90501	Pak Khleng	HIV/AIDS home based attendant group support to serve carriers and families affected	12	Time	0	CARE International in Cambodia		<input type="checkbox"/>
90501	Pak Khleng	Mental support to HIV/AIDS carriers through monks and other religious leaders	12	Time	0	CARE International in Cambodia		<input type="checkbox"/>
90501	Pak Khleng	Mental support training through village chiefs, monks, religious leaders and self-help group leaders	1	Time	0	CARE International in Cambodia		<input type="checkbox"/>
90501	Pak Khleng	Support peer local education program for couple those are knowledgeable on reproduction health, HIV/AIDS	12	Time	0	CARE International in Cambodia		<input type="checkbox"/>
90501	Pak Khleng	HIV/AIDS home based attendant group support to serve carriers and families affected	12	Time	0	CARE International in Cambodia		<input type="checkbox"/>
90501	Pak Khleng	World TB combat week organizing	1	Time	0	Department of Health		<input type="checkbox"/>
90501	Pak Khleng	Community DOTS application monitoring training to watchdog group	1	Time	0	CARE International in Cambodia		<input type="checkbox"/>
90501	Pak Khleng	Transportation means support for forewarn pregnancy women	12	Month	0	CARE International in Cambodia		<input type="checkbox"/>
90501	Pak Khleng	Community DOTS strategy implementation by village health group to cure TB	12	Month	0	CARE International in Cambodia		<input type="checkbox"/>
90501	Pak Khleng	Quarterly TBA meeting support	4	Time	0	CARE International in Cambodia		<input type="checkbox"/>



## District Data Book 2009: District Profile

Commune GIS	Commune	Temporary Agreements				Supporter	Funding Source	Listed in CIP before DIW
		Project Name	Quantity	Unit	Est.Cost (K.Riels)			
90501	Pak Khlang	Birth spacing materials distributors monthly meeting	12	Time	0	CARE International in Cambodia		<input type="checkbox"/>
90501	Pak Khlang	Monthly village health volunteer meeting support	12	Time	0	CARE International in Cambodia		<input type="checkbox"/>
90501	Pak Khlang	Health center management committee bi-monthly meeting	6	Time	0	CARE International in Cambodia		<input type="checkbox"/>
90501	Pak Khlang	Vitamin A and deworming pills supply to children during May-November	1	Time	0	Department of Health		<input type="checkbox"/>
90501	Pak Khlang	Outdoor medical consultation	2	Time	0	Department of Health		<input type="checkbox"/>
90501	Pak Khlang	Vaccination support, pregnancy medical check, birth spacing and ferrous medicines provision	2	Time	0	Department of Health		<input type="checkbox"/>
90501	Pak Khlang	Village level dissemination workshop	3	Time	1284	Partners for Development		<input type="checkbox"/>
90501	Pak Khlang	Community skill teacher training	1	Time	5064	Partners for Development		<input type="checkbox"/>
90501	Pak Khlang	World TB combat week organizing	1	Time	0	Department of Health		<input type="checkbox"/>
90501	Pak Khlang	Reproductive health dissemination	6	Course/year	7200			<input type="checkbox"/>
90501	Pak Khlang	Bird flue dissemination materials support, posters, booklet, video spot	1	set	420	CARE International in Cambodia		<input type="checkbox"/>
90501	Pak Khlang	Bird flue awareness and roles of village watchdog in preparing respond to bird flu outbreak training	1	Course/year	4462	CARE International in Cambodia		<input type="checkbox"/>
90501	Pak Khlang	Village meeting support to promote bird flue awareness, importance of roles and responsibility of village watchdog team	7	Time	1054.84	CARE International in Cambodia		<input type="checkbox"/>
90501	Pak Khlang	Primary school construction	1	building	0	Department of Education Youth and Sports		<input type="checkbox"/>
90501	Pak Khlang	Sanitation and hygiene dissemination	1	Course/year	0	Department of Rural Development		<input type="checkbox"/>
90501	Pak	DOTS implementation watch monthly meeting	12	Time	0	CARE International in		<input type="checkbox"/>

Commune GIS	Commune	Temporary Agreements				Supporter	Funding Source	Listed in CIP before DIW
		Project Name	Quantity	Unit	Est.Cost (K.Riels)			
	Khlang	support				Cambodia		
90501	Pak Khlang	Latrine construction materials supply	15	toilet	0	Department of Rural Development		<input type="checkbox"/>
90501	Pak Khlang	TB world day organizing support	1	bottle	0	CARE International in Cambodia		<input type="checkbox"/>
90501	Pak Khlang	Birth health care training to VHV and TBA	1	Time	0	CARE International in Cambodia		<input type="checkbox"/>
90501	Pak Khlang	Life skills class training to out school teenage	3	class	15420	Partners for Development		<input type="checkbox"/>
90501	Pak Khlang	Tuberculosis cases searching within community	4	Time	0	CARE International in Cambodia		<input type="checkbox"/>
90501	Pak Khlang	Roles and responsibilities of bird flue watchdog villagers promotion on dissemination, reporting epidemic of flue	12	Time	1057.68	CARE International in Cambodia		<input type="checkbox"/>
90501	Pak Khlang	Dengue fever outbreak control activities	1	Time	0	CARE International in Cambodia		<input type="checkbox"/>
90501	Pak Khlang	Village service delivery mission support, nearer than 10 km	12	Time	0	CARE International in Cambodia		<input type="checkbox"/>
90501	Pak Khlang	Mother contest on awareness of pregnant care, birth preparation and birth spacing	4	Time	0	CARE International in Cambodia		<input type="checkbox"/>
90501	Pak Khlang	World breastfeeding week organizing	1	Time	0	CARE International in Cambodia		<input type="checkbox"/>
<b>NREM</b>								
90501	Pak Khlang	Environmental awareness and law education	1	time	0	Department of Environment		<input type="checkbox"/>
<b>Administration and Security</b>								
90501	Pak Khlang	Cadastral law dissemination	1	training	0	Department of Land Management, Urban Planning & Construction		<input type="checkbox"/>
90501	Pak Khlang	Drug addict impact awareness education	1	Course/year	0	Provincial Office of Parliament and the Senate relation		<input type="checkbox"/>
90501	Pak Khlang	Environmental, fishery, forestry and land laws workshop training	1	Course/year	1200	WildAid		<input type="checkbox"/>

Commune GIS	Commune	Temporary Agreements				Supporter	Funding Source	Listed in CIP before DIW
		Project Name	Quantity	Unit	Est.Cost (K.Riels)			
90501	Pak Khleng	Community committee training workshop on CDP and budget plan formulation	1	Course/year	1200	WildAid		<input type="checkbox"/>
90501	Pak Khleng	Community study tour organizing	1	Time	1600	WildAid		<input type="checkbox"/>
90501	Pak Khleng	Khmer rouge trial dissemination	1	training	0	Partners for Development		<input type="checkbox"/>
90501	Pak Khleng	Village boundary demarcation	1	Time	0	Department of Land Management, Urban Planning & Construction		<input type="checkbox"/>
90501	Pak Khleng	Laws dissemination and legal consultation services	2	time	0	Partners for Development		<input type="checkbox"/>
<b>Gender</b>								
90501	Pak Khleng	Gender mainstreaming dissemination	6	Course/year	4800			<input type="checkbox"/>
90501	Pak Khleng	Planning and reporting skills training	1	time	0	Department of Women		<input type="checkbox"/>
90501	Pak Khleng	Gender workshop with village education committee and CC members	1	Time	1068	Partners for Development		<input type="checkbox"/>
90501	Pak Khleng	Gender mainstreaming strengthening meeting to CWCC	1	time	0	Department of Women		<input type="checkbox"/>

### 8.2.2 Temporary Agreements for 2009 as per DIW 2008 for Commune: Peam Krasaob

Commune GIS	Commune	Temporary Agreements				Supporter	Funding Source	Listed in CIP befor DIW
		Project Name	Qua ntity	Unit	Est.Cost (K.Riels)			
Economic								
90502	Peam Krasaob	Cash management training workshop	1	Time	1200	Partners for Development		<input type="checkbox"/>
90502	Peam Krasaob	Small fund support responding to community needs	0		8000	Partners for Development		<input type="checkbox"/>
90502	Peam Krasaob	Community committee training on marketing and community production chain	1	Time	1200	Partners for Development		<input type="checkbox"/>
Social								

District Data Book 2009: District Profile

Commune GIS	Commune	Temporary Agreements				Supporter	Funding Source	Listed in CIP before DIW
		Project Name	Quantity	Unit	Est.Cost (K.Riels)			
90502	Peam Krasaob	Fever, inflammation respiration disease and diarrhea consultation by VHV	0		0	CARE International in Cambodia		<input type="checkbox"/>
90502	Peam Krasaob	HIV/AIDS world day organizing	2	village	0	Department of Health		<input type="checkbox"/>
90502	Peam Krasaob	Literacy class	30	person	0	Department of Education Youth and Sports		✓
90502	Peam Krasaob	Health post re-generating	1	village	0	Department of Health		<input type="checkbox"/>
90502	Peam Krasaob	Malaria, HIV/AIDS, sexual disease, tuberculosis, bird flue and nutrition education	1	Time	0	CARE International in Cambodia		<input type="checkbox"/>
90502	Peam Krasaob	TB awareness education at secondary school	0		0	Department of Health		<input type="checkbox"/>
90502	Peam Krasaob	Breastfeeding world week organizing	2	village	0	CARE International in Cambodia		<input type="checkbox"/>
90502	Peam Krasaob	Tuberculosis cases searching and monitoring	2	village	0	Department of Health		<input type="checkbox"/>
90502	Peam Krasaob	World TB combat week organizing	2	village	0	Department of Health		<input type="checkbox"/>
90502	Peam Krasaob	World TB combat week organizing	1	Time	0	Department of Health		<input type="checkbox"/>
90502	Peam Krasaob	Impregnated mosquitoes net distribution and re-impregnating	2	village	0	Department of Health		<input type="checkbox"/>
90502	Peam Krasaob	Transportation means support for forewarn pregnancy women	2	village	0	CARE International in Cambodia		<input type="checkbox"/>
90502	Peam Krasaob	HIV/AIDS carriers home based care	2	village	0	Department of Health		<input type="checkbox"/>
90502	Peam Krasaob	Diarrhea and mononucleosis treatment bi-monthly supervision	6	Time	0	CARE International in Cambodia		<input type="checkbox"/>
90502	Peam Krasaob	HIV/AIDS education during water festival	2	village	0	Department of Health		<input type="checkbox"/>
90502	Peam Krasaob	Quarterly TBA meeting support	4	Time	0	CARE International in Cambodia		<input type="checkbox"/>
90502	Peam Krasaob	Monthly birth spacing distributors meeting support	12	Time	0	CARE International in Cambodia		<input type="checkbox"/>

District Data Book 2009: District Profile

Commune GIS	Commune	Temporary Agreements				Supporter	Funding Source	Listed in CIP befor DIW
		Project Name	Quantity	Unit	Est.Cost (K.Riels)			
90502	Peam Krasaob	Monthly village health volunteer meeting support	12	Time	0	CARE International in Cambodia		<input type="checkbox"/>
90502	Peam Krasaob	Health center management committee bi-monthly meeting	6	Time	0	CARE International in Cambodia		<input type="checkbox"/>
90502	Peam Krasaob	Vitamin A and deworming pills supply to children during May-November	2	village	0	Department of Health		<input type="checkbox"/>
90502	Peam Krasaob	Outdoor medical consultation	2	village	0	Department of Health		<input type="checkbox"/>
90502	Peam Krasaob	Vaccination support, pregnancy medical check, birth spacing and ferrous medicines provision	2	village	0	Department of Health		<input type="checkbox"/>
90502	Peam Krasaob	Reproductive health awareness education	6	training	1200	Provincial Local Administration Unit		✓
90502	Peam Krasaob	Latrine construction	15	place	0	Department of Environment		✓
90502	Peam Krasaob	School building	1	building	0	Provincial Office		✓
90502	Peam Krasaob	Community DOTS strategy implementation by village health group to cure TB	2	village	0	CARE International in Cambodia		<input type="checkbox"/>
90502	Peam Krasaob	Dengue fever outbreak control activities	1	Time	0	CARE International in Cambodia		<input type="checkbox"/>
90502	Peam Krasaob	Dengue fever outbreak control activities	1	Time	0	CARE International in Cambodia		<input type="checkbox"/>
90502	Peam Krasaob	Mother contest on awareness of pregnant care, birth preparation and birth spacing	4	Time	0	CARE International in Cambodia		<input type="checkbox"/>
90502	Peam Krasaob	Diarrhea and mononucleosis control training to VHSG	1	Time	0	CARE International in Cambodia		<input type="checkbox"/>
90502	Peam Krasaob	Baby care skills training to TBA	1	Time	0	CARE International in Cambodia		<input type="checkbox"/>
90502	Peam Krasaob	Community DOTS application monitoring training	1	Time	0	CARE International in Cambodia		<input type="checkbox"/>
90502	Peam Krasaob	HIV/AIDS carrier searching out	2	village	0	Department of Health		<input type="checkbox"/>
90502	Peam	DOTS implementation watch monthly	12	Time	0	CARE International in		<input type="checkbox"/>

## District Data Book 2009: District Profile

Commune GIS	Commune	Temporary Agreements				Supporter	Funding Source	Listed in CIP befor DIW
		Project Name	Quantity	Unit	Est.Cost (K.Riels)			
	Krasaob	meeting support at health center				Cambodia		
90502	Peam Krasaob	Mother contest on awareness of pregnant care, birth preparation and birth spacing	4	Time	0	CARE International in Cambodia		<input type="checkbox"/>
90502	Peam Krasaob	Diarrhea and mononucleosis control training to VHSG	1	Time	0	CARE International in Cambodia		<input type="checkbox"/>
90502	Peam Krasaob	Birth health care training to VHV and TBA	1	Time	0	CARE International in Cambodia		<input type="checkbox"/>
90502	Peam Krasaob	Support peer local education program for couple those are knowledgeable on reproduction health, HIV/AIDS	12	Time	0	CARE International in Cambodia		<input type="checkbox"/>
90502	Peam Krasaob	Tuberculosis cases searching within community	4	Time	0	CARE International in Cambodia		<input type="checkbox"/>
90502	Peam Krasaob	Peer education training to couple who is knowledgeable on reproductive health and HIV/AIDS	1	Course/year	0	CARE International in Cambodia		<input type="checkbox"/>
90502	Peam Krasaob	Community DOTS application monitoring training to watchdog group	1	Time	0	CARE International in Cambodia		<input type="checkbox"/>
90502	Peam Krasaob	Support monthly meeting of couple those are knowledgeable on reproduction health, HIV/AIDS	4	Time	0	CARE International in Cambodia		<input type="checkbox"/>
90502	Peam Krasaob	Village health committee quarterly meeting on emergency rescue system	4	Time	0	CARE International in Cambodia		<input type="checkbox"/>
90502	Peam Krasaob	HIV/AIDS home based attendant group support to serve carriers and families affected	12	Time	0	CARE International in Cambodia		<input type="checkbox"/>
90502	Peam Krasaob	Mental support to HIV/AIDS carriers through monks and other religious leaders	12	Time	0	CARE International in Cambodia		<input type="checkbox"/>
90502	Peam Krasaob	Mental support training through village chiefs, monks, religious leaders and self-help group leaders	1	Time	0	CARE International in Cambodia		<input type="checkbox"/>
90502	Peam Krasaob	HIV/AIDS home based attendant group support to serve carriers and families affected	12	Time	0	CARE International in Cambodia		<input type="checkbox"/>
90502	Peam	Monthly meeting of DOTS community	12	Time	0	CARE International in		<input type="checkbox"/>

District Data Book 2009: District Profile

Commune GIS	Commune	Temporary Agreements				Supporter	Funding Source	Listed in CIP before DIW
		Project Name	Quantity	Unit	Est.Cost (K.Riels)			
	Krasaob	watchdog at health center				Cambodia		
90502	Peam Krasaob	Tuberculosis cases searching within community	4	Time	0	CARE International in Cambodia		<input type="checkbox"/>
<b>NREM</b>								
90502	Peam Krasaob	Public rubbish bin sitting	20	Garbage bin	0	Department of Environment		✓
90502	Peam Krasaob	Environmental, fishery, forestry and land laws workshop training	1	training	1200	Partners for Development		<input type="checkbox"/>
90502	Peam Krasaob	Environmental, fishery, forestry and land laws workshop training	1	training	1200	Partners for Development		<input type="checkbox"/>
<b>Administration and Security</b>								
90502	Peam Krasaob	Laws dissemination and legal consultation services	2	time	0	Partners for Development		<input type="checkbox"/>
90502	Peam Krasaob	Sketch mapping and land use identification	2	training	0	Department of Land Management, Urban Planning & Construction	PIF	<input type="checkbox"/>
90502	Peam Krasaob	Village boundary demarcation	2	training	0	Department of Land Management, Urban Planning & Construction		<input type="checkbox"/>
90502	Peam Krasaob	Cadastral law dissemination	2	training	0	Department of Land Management, Urban Planning & Construction		<input type="checkbox"/>
90502	Peam Krasaob	Community study tour support	1	time	1600	Partners for Development		<input type="checkbox"/>
90502	Peam Krasaob	Planning and reporting skills training	1	training	0	Department of Women		<input type="checkbox"/>
<b>Gender</b>								
90502	Peam Krasaob	Gender mainstreaming dissemination	6	training	800	Provincial Local Administration Unit		<input type="checkbox"/>

### 8.2.3 Temporary Agreements for 2009 as per DIW 2008 for Commune: Tuol Kokir

Commune GIS	Commune	Temporary Agreements				Supporter	Funding Source	Listed in CIP befor DIW
		Project Name	Quantity	Unit	Est.Cost (K.Riels)			
Economic								
90503	Tuol Kokir	Bio safety animal raising technique, on-farm supervision support	6	Time	0	CARE International in Cambodia		<input type="checkbox"/>
90503	Tuol Kokir	Pesticide request	1	Time	0	Department of Agriculture Forestry and Fisheries	PIF	✓
90503	Tuol Kokir	Bird bio safety raising technique, on-farm consultation service provision	6	Course/year	0	CARE International in Cambodia		<input type="checkbox"/>
90503	Tuol Kokir	Chemical and pesticide application training	1	training	0	Department of Agriculture Forestry and Fisheries	PIF	✓
90503	Tuol Kokir	Livestock vaccinating support	2	time	0	Department of Agriculture Forestry and Fisheries		<input type="checkbox"/>
Social								
90503	Tuol Kokir	Dengue fever control activities	1	Time	0	CARE International in Cambodia		<input type="checkbox"/>
90503	Tuol Kokir	Health education, mother contest on pregnancy medical check and birth spacing awareness	4	Time	0	CARE International in Cambodia		<input type="checkbox"/>
90503	Tuol Kokir	Community DOTS application monitoring training to watchdog group	1	Time	0	CARE International in Cambodia		<input type="checkbox"/>
90503	Tuol Kokir	Monthly meeting of DOTS community watchdog at health center	12	Time	0	CARE International in Cambodia		<input type="checkbox"/>
90503	Tuol Kokir	Mental support training through village chiefs, monks and religious leaders	1	Time	0	CARE International in Cambodia		<input type="checkbox"/>
90503	Tuol Kokir	Mental support to HIV/AIDS carriers through monks	12	Time	0	CARE International in Cambodia		<input type="checkbox"/>
90503	Tuol Kokir	Vaccination support, pregnancy medical check, birth spacing and ferrous medicines provision	12	Time	0	Department of Health		<input type="checkbox"/>
90503	Tuol Kokir	Quarterly meeting with village health committee on emergency services	4	Time	0	CARE International in Cambodia		<input type="checkbox"/>
90503	Tuol Kokir	Inflammation respiration disease and diarrhea control training	1	Time	0	CARE International in Cambodia		<input type="checkbox"/>



## District Data Book 2009: District Profile

Commune GIS	Commune	Temporary Agreements				Supporter	Funding Source	Listed in CIP befor DIW
		Project Name	Quantity	Unit	Est.Cost (K.Riels)			
90503	Tuol Kokir	Leaflets and posters distribution	6	training	0	Provincial Local Administration Unit		✓
90503	Tuol Kokir	TBA training	1	person	6	CARE International in Cambodia		✓
90503	Tuol Kokir	Health network creation/strengthening	6	time	0	Department of Health		✓
90503	Tuol Kokir	Health local service provision for women-children	12	Time	0	CARE International in Cambodia		✓
90503	Tuol Kokir	Literacy class	1	class	0	Department of Education Youth and Sports		✓
90503	Tuol Kokir	HIV/AIDS carrier home based support group	12	Time	0	CARE International in Cambodia		□
90503	Tuol Kokir	World TB combat week organizing	1	Time	0	Department of Health		□
90503	Tuol Kokir	Bird flue epidemic awareness training	1	training	0	CARE International in Cambodia		□
90503	Tuol Kokir	Tuberculosis cases searching within community	4	Time	0	CARE International in Cambodia		□
90503	Tuol Kokir	Bird flue dissemination materials support, posters, pictures, booklet and video spots	1	set	0	CARE International in Cambodia		□
90503	Tuol Kokir	Capacity improvement to intervene during bird flue outbreak	12	training	0	CARE International in Cambodia		□
90503	Tuol Kokir	Bird flue awareness meeting and bird flue watchdog group	4	Time	0	CARE International in Cambodia		□
90503	Tuol Kokir	Tuberculosis cases searching and monitoring	1	Time	0	Department of Health		□
90503	Tuol Kokir	Consultation and curing services	12	Time	0	Department of Health		□
90503	Tuol Kokir	Impregnated mosquitoes net distribution and re-impregnating	1	Time	0	Department of Health		□
90503	Tuol Kokir	Community DOTS strategy implementation by village health group to cure TB	3	Time	0	Department of Health		□
90503	Tuol Kokir	Quarterly meeting of TBA	4	Time	0	Department of Health		□
90503	Tuol Kokir	Monthly birth spacing distributors meeting support	12	Time	0	Department of Health		□
90503	Tuol Kokir	Monthly village health volunteer meeting	12	Time	0	Department of Health		□

District Data Book 2009: District Profile

Commune GIS	Commune	Temporary Agreements				Supporter	Funding Source	Listed in CIP befor DIW
		Project Name	Quantity	Unit	Est.Cost (K.Riels)			
		support						
90503	Tuol Kokir	Health center management committee bi-monthly meeting	6	Time	0	Department of Health		<input type="checkbox"/>
90503	Tuol Kokir	Vitamin A supply to children and deworming during May-November	2	Time	0	Department of Health		<input type="checkbox"/>
90503	Tuol Kokir	Malaria, HIV/AIDS, sexual disease, tuberculosis, bird flue and nutrition education	1	Time	0	Department of Health		<input type="checkbox"/>
<b>NREM</b>								
90503	Tuol Kokir	Forestry law education	1	training	0	Save Cambodia's Wildlife		✓
90503	Tuol Kokir	Environmental law	1	time	0	WildAid		<input type="checkbox"/>
90503	Tuol Kokir	NREM education campaign	2	time	0	Save Cambodia's Wildlife		<input type="checkbox"/>
90503	Tuol Kokir	Fishery law education	1	training	0	Provincial Office of Parliament and the Senate relation		✓
90503	Tuol Kokir	Fishery law education	1	training	0	WildAid		✓
<b>Administration and Security</b>								
90503	Tuol Kokir	Land law dissemination	1	family	0	Department of Land Management, Urban Planning & Construction		✓
90503	Tuol Kokir	Land law dissemination	1	training	0	Department of Land Management, Urban Planning & Construction		✓
90503	Tuol Kokir	Land law dissemination	1	training	0	Save Cambodia's Wildlife		✓
90503	Tuol Kokir	Village/commune border identification	1	time	0	Department of Land Management, Urban Planning & Construction		✓
90503	Tuol Kokir	Community product and chain production dissemination	1	time	0	WildAid		<input type="checkbox"/>
90503	Tuol Kokir	Planning skills training	1	time	0	Department of Women		<input type="checkbox"/>
90503	Tuol Kokir	Human rights and law training	2	training	0	Partners for Development		✓
90503	Tuol Kokir	Budget management dissemination	1	time	0	Save Cambodia's Wildlife		<input type="checkbox"/>
<b>Gender</b>								
90503	Tuol Kokir	Law against domestic violence	1	training	0	Department of Women		✓

District Data Book 2009: District Profile

Commune GIS	Commune	Temporary Agreements				Supporter	Funding Source	Listed in CIP before DIW
		Project Name	Quantity	Unit	Est.Cost (K.Riels)			
		dissemination						
90503	Tuol Kokir	Gender mainstreaming among local people	7	training	0	Provincial Local Administration Unit		✓

**Source:** CDPD, District Level Detail TA resulting from DIW

### 8.3 Outputs, estimated and actual costs of C/S Fund Projects between 2005 and 2008, by Commune

Commune	Project Type	Budget Year	Output		Quantity	Unit	Unit Cost MR	
			Description	Type			Estimate	Actual
Pak Khlang	Rural Transport	2005	Laterite road	Repair	0.853	Km	5.77	29.17
Pak Khlang	Rural Transport	2005	Laterite road	New	0.2	Km	3.50	29.17
Pak Khlang	Rural Transport	2005	Concrete road	New	0.191	Km	22.01	29.17
Pak Khlang	Rural Transport	2006	Double pipe culvert	New	1	Place	2.79	3.00
Pak Khlang	Rural Transport	2006	Double cell box culvert	New	1	Place	20.20	21.00
Pak Khlang	Rural Transport	2006	Boat landing place	New	1	Place	12.92	13.00
Pak Khlang	Rural Transport	2006	Laterite road	Repair	0.55	Km	10.63	11.50
Pak Khlang	Rural Transport	2006	Laterite road	New	0.3	Km	7.31	8.00
Pak Khlang	Rural Transport	2006	Laterite road	Repair	0.253	Km	3.27	3.70
Pak Khlang	Rural Transport	2006	Laterite road	New	0.2	Km	4.65	4.80
Pak Khlang	Rural Transport	2006	Laterite road	Repair	0.6	Km	10.09	12.50
Pak Khlang	Rural Transport	2007	Double pipe culvert	New	1	Place	10.02	10.00
Pak Khlang	Urban transport	2007	Concrete road	New	0.096	Km	29.01	29.00
Pak Khlang	Rural Transport	2008	Concrete road	New	9.90E-02	Km	32.76	33.37
Pak Khlang	Rural Transport	2008	Laterite road	New	0.152	Km	6.35	6.67
Peam Krasaob	Rural Transport	2005	Laterite road	New	2.565	Km	38.16	38.00
Peam Krasaob	Rural Transport	2006	Inland waterway	Repair	1	Km	16.00	16.00
Peam Krasaob	Rural Transport	2008	Laterite road	New	1.523	Km	56.73	56.73
Tuol Kokir	Rural Transport	2005	Laterite road	Repair	0.726	Km	16.40	14.88
Tuol Kokir	Irrigation	2005	Single pipe Culvert with gate	New	1	Place	5.43	5.43
Tuol Kokir	Rural Transport	2007	Double cell box culvert	Repair	1	Place	2.04	3.34
Tuol Kokir	Rural Transport	2007	Single cell box culvert	Repair	1	Place	1.30	3.34
Tuol Kokir	Rural Transport	2007	Laterite road	Repair	0.98	Km	20.94	20.93
Tuol Kokir	Irrigation	2007	Single pipe Culvert with gate	New	1	Place	9.13	9.13
Tuol Kokir	Rural Transport	2007	Laterite road	New	1.356	Km	36.78	36.78
Tuol Kokir	Rural Transport	2008	Gravel road	New	0.94	Km	25.03	25.00

Source: PID

#### 8.4 Total Expenditure on C/S Fund Projects by sector and commune between 2005 and 2008

Sector	Total Cost in Million Riels		
	Pak Khlang	Peam Krasaob	Tuol Kokir
Irrigation			14.56
Rural Transport	156.71	110.73	100.93
Urban transport	29.00		

Source: PID

#### 8.5 Actual 2009 C/S Fund projects by Commune

Commune	Project Type	Project Output		Quantity	Unit	Fund Source (Riels)		
		Description	Type			Total	C/S	Local Contribution
Pak Khlang	Rural Transport	Laterite road	Repair	0.915	km	33,424,691	33,424,691	0
Pak Khlang	Rural Transport	Laterite road	Repair	0.445	km	21,346,309	21,346,309	0
Peam Krasaob	Rural Transport	Natural Gravel road	Repair	0.676	km	35,845,260	35,845,260	0
Peam Krasaob	Rural Transport	Earth road	Repair	0.75	km	36,090,600	36,090,600	0
Peam Krasaob	Rural Transport	Earth road	Repair	0.409	km	20,637,800	20,637,800	0
Tuol Kokir	Rural Transport	Steel-reinforced concrete road	New	0.035	km	34,044,358	33,844,358	200,000

Source: PID

## 9 District level Projects from 2006 to 2009

District Initiative Projects (DIPs) are funded by Danida, DFID and PSDD (UNDP, DFID and SIDA).

### **Funding for 2006-2008**

Between 2006 and 2008 there were 14 provinces funded by PSDD and 10 by Danida and DFID. The list of provinces and who funded these is below

#### *Danida and DFID funded DIPs:*

Kampong Cham	Kampong Speu	Koh Kong	Kratie	Monduliri
Pursat	Ratanakiri	Siem Reap	Sihanoukville	Kep

#### *PSDD funded DIPs:*

Banteay Meanchey	Battambang	Kampong Chhnang	Kandal	Phnom Penh
Prey Veng	Svay Rieng	Takeo	Kampong Thom	Preah Vihear
Stung Treng	Kampot	Oddar Meanchey	Pailin	

### **Funding for 2009**

In 2009 there was a change to the number of provinces funded by the two streams. Danida and DFID were still funding the same 10 provinces they had been funding the previous three years, but two more provinces were added *Kampong Thom and Kampot*. Now PSDD funds 12 provinces and Danida and DFID fund 12.

## 9.1 District Initiative Infrastructure Projects from 2006 to 2009

### 9.1.1 District Initiative Infrastructure Projects for 2006 to 2008

Date	Project Name	Implementing Agencies	Budget (US\$)	Project Output & Capacity	Number of Beneficiaries
2007	Construct concrete boxes for fish and posts	Inter-commune	3,059.00		
2007	Construct bridge and tower for natural tourism	Inter-commune	22,182.00		
2008	Construction of eco-tourism of Peam Krasob	Inter-commune	24,000.00	1 building	3 communes, 500 families

### 9.1.2 District Initiative Infrastructure Projects in 2009

*No District Initiative Infrastructure Projects have been implemented in this district for 2009*

## 9.2 District Initiative Service Projects from 2006 to 2009

### 9.2.1 District Initiative Service Projects for 2006 to 2008

Date	Project Names	Implementing agencies	Budget (US\$)	Project Output & Capacity	Number of Beneficiaries
2007	Training on fishery law	DAFF	498.00		
2007	Training on agri technique and demonstration	DAFF	1,296.50		
2008	Training on souvenir making using sea and forest NTFP	Dept of Culture	1,800.00	2 trainings	total = 30 Ps, F = 20 Ps
2008	Education and dissemination on sanitation and environment	Dept of Environment	800.00	3 trainings	total = 300 Ps, F = 150 Ps

### 9.2.2 District Initiative Service Projects in 2009

Project Name	Sector	Implementing Agency	Budget	Project outputs/ capacities	No. of Beneficiaries		Progress	Remarks on Issues of Progress
					Total	Female		
Training on animal raising and demonstration	AGR	PDA	\$1,130.00	2 courses	50	25	0%	Not yet done
Training on fishery processing	AGR	Fisheries Admin	\$281.00	1 course	25	15	0%	Not yet done
Dissemination on land conflict resolution	LUM	PDoNASRI	\$1,738.00	1 course	300	150	0%	Not yet done
Training on souvenir making using sea products	CUL	PDoCFA	\$1,140.00	1 course	15	10	100%	
Education and dissemination on sanitation and environment	NRM	PDoE	\$1,617.00	3 courses	240	150	0%	Not yet done

### 9.3 Inter Commune Council Projects in 2008 and 2009

#### 9.3.1 ICC Projects in 2008

Districts	Project Location	Beneficiary Commune/ Sangkat	Outputs	Project Size	Unit	Contract Cost	Fund Sources	
							ICC Fund	Community
<b>Botum Sakor</b>	Thmasa, Andong Tik	Thmasa, Andong Tik, Tanuon	Road box-culvert construction (1 triple)	2	Unit	\$29,900.00	\$29,750.00	\$150.00
<b>Total for Botum Sakor</b>						<b>\$29,900.00</b>	<b>\$29,750.00</b>	<b>\$150.00</b>
<b>Khemara Phoumin</b>	Dang Tung, Smach Meanchey	Dang Tung, Smach Meanchey	Drainage system construction	540	Metre	\$11,717.00	\$11,617.00	\$100.00
	Dang Tung, Smach Meanchey	Dang Tung, Smach Meanchey	Concret road construction	180	Metre	\$18,500.00	\$18,300.00	\$200.00
<b>Total for Khemara Phoumin</b>						<b>\$30,217.00</b>	<b>\$29,917.00</b>	<b>\$300.00</b>
<b>Total Koh Kong Province</b>						<b>\$60,117.00</b>	<b>\$59,667.00</b>	<b>\$450.00</b>



### 9.3.2 ICC Projects in 2009

Districts	Project Location	Beneficiary Commune/ Sangkat	Outputs	Project Size	Unit	Contract Cost	Fund Sources	
							ICC Fund	Community
Khemarak Phumin	Dang Tung, Smach Mean Chey, Stueng Veng	Dang Tung, Smach Mean Chey, Stueng Veng	Concrete Road Construction	500	Meter	Contract not yet signed		
	Smach Mean Chey	Dang Tung, Smach Mean Chey, Stueng Veng	Dissemination on Water Sanitation, Hygiene, and Environment	4	Course	Contract not yet signed		
<b>Total for Khemarak Phumin Municipality</b>						\$0.00	\$0.00	\$0.00
Bothum Sakor	Thmor Sor	Andoung Tuek, Thmor Sor, Ta Nuon, Kan Daul	Concrete Road (for high school)	2	place	Contract not yet signed		
	Thmor Sor	Andoung Tuek, Thmor Sor, Ta Nuon, Kan Daul	Technical Training on Machinery Repair	1	Course	Contract not yet signed		
	Andoung Tuek	Andoung Tuek, Thmor Sor	Technical Training on Lobster/Shrimp Conservation	1	Course	Contract not yet signed		
<b>Total for Botum Sakor</b>						\$0.00	\$0.00	\$0.00
Sre Ambel	Sre Ambel	Boueng Preav, Sre Ambel	Concrete Road Construction	150	Meter	Contract not yet signed		
	Chi Khor Loue, Chi Khor Kroam	Chi Khor Loue, Chi Khor Kroam	Dissemination on Water Sanitation, Hygiene, and Environment	6	Course	Contract not yet signed		
	Chi Kor Kraom, Chhroy Svay	Chi Khor Kroam, Chhroy Svay	Technical Training on Fish, Crab and Shrimp Raising	2	Course	Contract not yet signed		
	Dang Peng	Dang Peng, Sre Ambel, Chi Khor Luer.	Bridge Construction	35	Meter	Contract not yet signed		
<b>Total For Sre Ambel</b>						\$0.00	\$0.00	
<b>Total for Kah Kong</b>						<b>Contract not yet signed</b>		

**Source:** ICC project, Ministry of Interior (DoLA), -UNDP project for Local Governance – DDLG

## **9.4 Other Projects in 2008 and 2009**

### **9.4.1 RPRP**

*There are no RPRP projects being implemented in this district or province at this time. The RPRP is only being implemented in Svay Rieng and Prey Veng*

#### **9.4.1.1 RPRP Projects from 2006 to 2008**

*No RPRP projects in this district at this time*

#### **9.4.1.2 RPRP Projects in 2009**

*No RPRP projects in this district at this time*

### **9.4.2 Seth Korma**

#### **9.4.2.1 Seth Koma 2007**

*There are no Seth Korma projects being implemented in this district or province at this time.*  
**Source:** UNICEF

#### **9.4.2.2 Seth Koma 2008**

*There are no Seth Korma projects being implemented in this district or province at this time.*  
**Source:** UNICEF

#### **9.4.2.3 Seth Koma 2009**

*There are no Seth Korma projects being implemented in this district or province at this time.*  
**Source:** UNICEF

## **SECTION D: SERVICES AND ORGANIZATIONS**



## 10 Infrastructure

### 10.1 Length of and Expenditure on Roads in 2008, by District

Roads	KKG	Bothumsakor	kirisakor	Koh Kong	Khemarak phumen	Mondul sema	Sre Ambel	Thmabang
Length of paved road in the district	141	25	0	46	27	2	41	0
Length of unpaved roads in the district	803	91	3	38	140	101	368	62
Amount spent on construction of roads in 2008 (\$)	1,840,380	153,969	271,986	193,930	288,662	162,610	407,894	361,329
Amount spent on repair and rehabilitation of roads in 2008 (\$)	12,857						12,857	

**Note 1:** Please note that these data are not necessarily complete or correct. The data are derived from government agencies at provincial and district level which used different recording systems, did not always have complete data or were, sometimes, less than willing to share their data.

**Note 2:** Please be aware that these data are incomplete due to the fact that the amounts for the construction, repair and rehabilitation recorded reflect only funds provided by the government, not the contributions by any other parties.

### 10.2 Scale of and Expenditure on Irrigation in 2008, by District

Irrigation	KKG	Bothumsakor	kirisakor	Koh Kong	Khemarak phumen	Mondul sema	Sre Ambel	Thmabang
Number of irrigation schemes operating in 2008	5	2	0	0	0	0	3	0
Total nr of hectares under irrigation in dry season 2008	-	0	0	0	0	0	0	0
Total funds spent in 2008 on construction of irrigation systems (\$)	31,000	0	0	0	0	0	31,000	0
Total funds spent in 2008 on rehabilitation/repair of irrigation systems (\$)	77,488	77,488	0	0	0	0	0	0
Total funds spent in 2008 on operation and maintenance (\$)	3,221	3,221	0	0	0	0	0	0

**Note 1:** Please note that these data are not necessarily complete or correct. The data are derived from government agencies at provincial and district level which used different recording systems, did not always have complete data or were, sometimes, less than willing to share their data.

**Note 2:** Please be aware that the data above are incomplete as these only reflect funds provided by the government, not the contributions by farmers or other parties.

**10.3 Power Supply in 2008, by District**

Electricity	KKG	Bothumsakor	kirisakor	Koh Kong	Khemarak phumen	Mondul sema	Sre Ambel	Thmabang
Total number of electricity connections to households	19	6	2	1	1	2	5	2
Total number of electricity connections to agencies, companies, organizations	3	0	0	0	1	0	2	0
Total volume in KWh of electricity consumed last in 2008	108,650	39,000	22,275	1,875	n/a	n/a	45,500	n/a
Total amount collected from users for consumed electricity (\$)	68,202	24,375	7,593	2,109	n/a	n/a	34,125	n/a
Per capita electricity consumption in 2008 in Kwh	4	2	3	0	n/a	n/a	10	n/a

**Note 1:** Please note that these data are not necessarily complete or correct. The data are derived from government agencies at provincial and district level which used different recording systems, did not always have complete data or were, sometimes, less than willing to share their data.

**Note 2:** These data only record electricity provided by electricity companies and does not include homes powered by generators or batteries (for this information see Section B: General Profile, Part 1: General Information; table 1.3.1 and chart 1.3.4).

**Note 3:** In most provinces electricity is only provided through town-based networks

**Note 4:** Per capita consumption is calculated by dividing the total volume of electricity produced in 2008 by the number of people living in each district as per the 2008 census (for the provincial data it is calculated against the number of people living in the province)

## 11 Health Facilities

*Please note that the Operational District (health) boundaries are different to the administrative district boundaries. Therefore the data provided here shows the facilities, staff, NGOs etc in each Operational District within the province NOT the administrative district.*

### Acronyms

<b>Com Cov</b>	Commune Covered	<b>MW2</b>	Secondary Midwives
<b>CPA</b>	Complementary Package of Activities	<b>NU1</b>	Primary Nurse
<b>Dr</b>	Doctor	<b>NU2</b>	Secondary Nurse
<b>FDH</b>	Former District Hospital	<b>OD</b>	Operational District
<b>HC</b>	Health Center	<b>Others</b>	Other Staff
<b>HC (NB)</b>	Health Center no building	<b>PHD</b>	Provincial Health Department
<b>HP</b>	Health Post	<b>Pop 04-05</b>	Population Covered 2004 or 2005
<b>MA</b>	Medical Assistant	<b>RH</b>	Referral Hospital
<b>MPA</b>	Minimum Package of Activities	<b>Vil Cov</b>	Village Covered
<b>MW1</b>	Primary Midwives	<b>VIL-HC</b>	Distance from Village to Health Center

### 11.1 Health Facilities in the Province, by Operational District

Koh Kong	OD	RH	HC	HP
Smach Meanchey	1	1	6	3
Sre Ambel	1	1	7	
<b>Total</b>	<b>2</b>	<b>2</b>	<b>13</b>	<b>3</b>

### 11.2 Health Facilities and Staff in the province, by Operational District

This table shows health facilities, staff and coverage of health facilities in each operational district.

No	Facility Name	Type	Class	Dr	Ma	Nu2	Nu1	Mw2	Mw1	Others	Com Cov	Vil Cov	Pop. 04-05
<b>Smach Meanchey</b>													
1	Bak Khlang	HC	MPA	0	1	7	1	3	0	0	3	11	8,239
2	Kaoh Kapi	HP	Nil	0	0	0	0	0	0	1	1	3	3,261
3	Kiri Sakor	FDH	MPA	0	1	4	1	1	0	0	3	9	5,465
4	Neang Kok	HC(NB)	None	0	0	0	0	0	0	0	1	2	5,582
5	Ruessei Chrum	HP	Nil	0	0	0	0	0	0	4	4	13	1,778
6	Smach Mean Chey	HC(NB)	None	0	0	0	2	3	2	0	2	8	20,610
7	Steung Veng	HC(NB)	None	0	0	0	0	0	0	0	2	3	9,449
8	Ta Tai Kraom	HP	Nil	0	0	0	0	0	0	1	1	2	810
<b>Total:</b>				<b>0</b>	<b>2</b>	<b>11</b>	<b>4</b>	<b>7</b>	<b>2</b>	<b>6</b>	<b>17</b>	<b>51</b>	<b>55,194</b>
<b>Sre Ambel</b>													
1	Trapeang Rung	FDH	MPA	0	1	2	0	0	0	0	4	11	7,290
2	Andaung Teuk	FDH	MPA	0	0	1	1	1	0	0	2	11	7,044
3	Boeng Preav	HC	MPA	0	0	1	3	0	0	0	2	11	8,751
4	Chiphat	FDH	MPA	0	0	1	1	0	1	0	1	4	2,819
5	Kaev Phos	HC	None MPA	0	0	1	0	0	0	0	1	4	2,330
6	Srae Ambel	HC	MPA	0	0	2	2	1	0	0	4	22	23,009
7	Takavit	HC	MPA	0	0	1	1	0	0	3	4	13	13,307
<b>Total:</b>				<b>0</b>	<b>1</b>	<b>9</b>	<b>8</b>	<b>2</b>	<b>1</b>	<b>3</b>	<b>18</b>	<b>76</b>	<b>64,550</b>
<b>Total All</b>				<b>0</b>	<b>3</b>	<b>20</b>	<b>12</b>	<b>9</b>	<b>3</b>	<b>9</b>	<b>35</b>	<b>127</b>	<b>119,744</b>

Source: MEDiCAM – Infrastructure - ([http://www.medicam-cambodia.org/hsi/health\\_system/srch/index.asp?cboLcn=6&cmdSearch=Search&cboCHName=&cboType=](http://www.medicam-cambodia.org/hsi/health_system/srch/index.asp?cboLcn=6&cmdSearch=Search&cboCHName=&cboType=))

### 11.3 Deliveries in 2007 in the Province, by Operational District

OD	Deliveries	Deliveries at home		Deliveries	Total deliveries	Total deliveries
	at HC	By Health Staff	ByTBAs	at RH	by Health Staff	by health staff and TBAs
Smach Mean Chey	234	171	385	366	771	1156
Srae Ambel	336	216	476	115	667	1143
<i>Sub-total</i>	<i>570</i>	<i>387</i>	<i>861</i>	<i>481</i>	<i>1438</i>	<i>2299</i>

Source: MoH, Annual Statistics 2007



## 12 Education<sup>3</sup>

### 12.1 Schools, Classes, Students, Staff, for all levels, for 2007/2008 by District

District	Number of Schools	Disadv. Schools	Number of Classes	Classes in Pagoda	Enrollment		Repeaters		Teaching Staff		Non-Teaching Staff		Total Staff	
					Total	Girl	Total	Girl	Total	Female	Total	Female	Total	Female
Botum Sakor	16	0	105	2	4,527	2,129	457	211	91	17	9	2	100	19
Kampong Seila	18	0	125	0	4,785	2,208	371	159	97	17	2	1	99	18
Kiri Sakor	8	0	55	0	1,911	925	208	108	34	4	2	2	36	6
Koh Kong	10	0	54	0	1,581	740	132	62	42	7	2	0	44	7
Mondul Seima	14	0	89	0	3,121	1,459	419	174	70	30	10	1	80	31
Smach Meanchey	11	1	151	0	6,513	2,936	373	176	190	66	24	8	214	74
Sre Ambel	42	1	276	4	10,300	4,754	1,131	480	220	54	18	7	238	61
Thmar Baing	11	0	49	0	1,602	691	206	95	24	1	1	0	25	1
<b>Whole Province</b>	130	2	904	6	34,340	15,842	3,297	1,465	768	196	68	21	836	217
- Urban Area	11	1	151	0	6,513	2,936	373	176	190	66	24	8	214	74
- Rural Area	76	1	506	6	19,612	9,091	1,959	850	408	88	29	10	437	98
- Remote Area	43	0	247	0	8,215	3,815	965	439	170	42	15	3	185	45

### 12.2 Characteristics of Schools and School Principals for 2007/2008 by Commune

Commune	Number of Schools				2 - Shift	Floating	Schools	Attached	Schools Without		Characteristics of School Principals (Incharge)			
	Pre-Sch	Primary	College	Lycee	Schools	Schools	in Pagoda	Pre-Sch	Water Sup.	Latrine	Avg. Age	Avg. Service	U.Sec+ Ed.	Female
Pak Khlang	1	5	1	1	5	0	0	1	5		37.3	17.3	2	0
Peam Krasaob	0	2	1	0	1	0	0	0	1	1	28.9	7.7	1	0
Tuol Kokir	0	3	0	0	2	0	0	0	2	2	35.3	14.7	0	0

<sup>3</sup> All the data for section 12 comes from the Ministry of Education, Youth and Sport (MoEYS)

**12.3 Enrolment by Level of Education, 2006/2007 by Commune**

Commune	School	Pre school		Primary School		Lower Secondary School		Upper Secondary School		Enrolment	
		Total	Female	Total	Female	Total	Female	Total	Female	Total	Female
Pak Khlang	8	72	31	2170	1028	342	129	0	0	2584	1188
Peam Krasaob	2	0	0	323	174	0	0	0	0	323	174
Tuol Kokir	3	0	0	232	117	0	0	0	0	232	117

**12.4 Enrolment by Level of Education, 2007/2008 by Commune**

Commune	School	Pre school		Primary School		Lower Secondary School		Upper Secondary School		Enrolment	
		Total	Female	Total	Female	Total	Female	Total	Female	Total	Female
Pak Khlang	8	68	30	2018	951	355	152	58	19	2499	1152
Peam Krasaob	3	0	0	354	176	25	12	0		379	188
Tuol Kokir	3	0	0	243	119	0	0	0		243	119

**12.5 Aspects of Enrolment for 2007/2008 by Commune**

Commune	% Repeaters (Total)			% Over-age Enrollment (Total)			% Repeaters (Girl)			% Over-age Enrollment (Girl)		
	Primary	L.Sec.	U.Sec.	Primary	L.Sec.	U.Sec.	Primary	L.Sec.	U.Sec.	Primary	L.Sec.	U.Sec.
Pak Khlang	15.2	0.8	0.0	30.9	49.6	39.7	13.8	0.0	0.0	29.9	40.8	26.3
Peam Krasaob	15.3	0.0	0.0	26.8	52.0	0.0	13.1	0.0	0.0	25.6	50.0	0.0
Tuol Kokir	22.6	0.0	0.0	23.9	0.0	0.0	16.8	0.0	0.0	23.5	0.0	0.0

**12.6 School Buildings for all schools in the District for 2007/2008, by Commune**

Commune	Total Number of		Concrete/Brick Structure		Wooden Structure		Bamboo Structure		New Buildings		Buildings Without Good		
	Buildings	Rooms	Buildings	Rooms	Buildings	Rooms	Buildings	Rooms	Repaired	Constructed	Floor	Roof	Wall
Pak Khlang	10	45	8	42	2	3	0	0	0	3	0	0	0
Peam Krasaob	3	11	2	8	0	0	1	3	0	1	0	0	0
Tuol Kokir	3	8	1	4	2	4	0	0	0	0	0	0	0

**12.7 Conditions of Classrooms and Existence of Separate School Office and Library, by Commune**

Commune	Number of Class rooms	Number of Classrooms			Classrooms Without Good			Number of Furniture needed				Schools with Separate	
		in Pagoda	New Repaired	New Constr.	Floor	Roof	Wall	Desks	Chairs	Black-board	Teacher Table	Office	Library
Pak Khlang	37	0	0	11	0	0	0	19	10	1	1	6	4
Peam Krasaob	8	0	0	5	0	0	0	30	0	2	0	0	0
Tuol Kokir	25	0	0	0	0	0	0	10	0	1	1	0	0

**12.8 Community Participation and Financing across all schools in the District for 2007/2008 by Commune**

Commune	Parent Association				Commu. Teachers	Teaching Monks	PAP Fund (Riel)		Number of Schools Obtaining Funds from				
	Exists	Held Meet	Total	Female			per Student	per School	Sch. Income	Community	Gvt. For building	Abroad	IOs/NGOs
Pak Khlang	7	4	5	1	0	0	13,576	4,672,534	0	0	0	0	0
Peam Krasaob	2	1	5	1	0	0	9,545	2,415,000	0	1	0	0	0
Tuol Kokir	3	2	3	0	0	0	20,095	1,567,400	0	0	0	0	0

**12.9 Percentage Student Flow Rates and Graduation by level 2006/2007, by Commune**

Commune	Primary Level (Grades 1-6)			Lower Secondary Level (Grades 7-9)			Upper Secondary Level (Grades 10-12)			Successful Candidates		
	Promotion	Repetition	Dropout	Promotion	Repetition	Dropout	Promotion	Repetition	Dropout	Grade 6	Grade 9	Grade 12
Pak Khlang	72.1	14.1	13.8	79.2	0.9	19.9	0.0	0.0	0.0	199	67	0
Peam Krasaob	86.4	16.7	-3.1	0.0	0.0	0.0	0.0	0.0	0.0	21	0	0
Tuol Kokir	46.1	23.7	30.2	0.0	0.0	0.0	0.0	0.0	0.0	4	0	0

## 13 Staff and Resources at the District

*This chapter presents data from the District Information System, collected around the middle of 2009 unless otherwise specified.*

### 13.1 District Councilors elected in 2009

Name	Sex	Year of Birth	Function	Phone
ស្រី ឈីហា	M	1949	Chairperson of The Council	016-240 880
ចេង វណ្ណី	F	1958	Councillor	015-350 025
ដៅ ហេង	M	1953	Councillor	016-841 877
ប៊ុន ម៉ី	M	1953	Councillor	016-958 745
ធំ សំអាត	M	1957	Councillor	016-700 247
ស៊ីម វណ្ណារ៉ា	M	1958	Councillor	011-285 344
តាត់ ម៉ាសិស	M	1962	Councillor	016-752 731

### 13.2 Committees of the Council

*Please note at the time of producing the district data books the composition of the committees was not known for all district councils and therefore data were not available for 13.2.1, 13.2.2, 13.2.3.*

#### 13.2.1 Technical Facilitation Committee

#### 13.2.2 Women's and Children's Affairs Committee

#### 13.2.3 Procurement Committee

### 13.3 Board of Governors

### 13.4 Offices under Sala Krong, Sala Srok and Sala Khan

Office Name	Chief		Deputy Chief		No. of Staff				Office Area (m2)	No of vehicle (public or program)	
					State		Contract				
	M	F	M	F	M	F	M	F		vehicle	moto
District/ Khan Cabinet	1	0	0	0	0	0	0	0	Borrow	0	0
Adminnistration Office	0	0	0	0	5	0	0	0	Borrow	0	1
Economy Office	0	0	0	0	3	0	0	0	Borrow	0	0
Social Affair Office	1	0	0	0	2	0	0	0	Borrow	0	0

### 13.5 Municipality/District/Khan line offices

Office Name	Chief		Deputy Chief		No. of Staff				Office Area (m2)	No of vehicle (public or program)	
					State		Contract				
	M	F	M	F	M	F	M	F		vehicle	moto
District/ Khan Police Headquarter	1	0	4	0	43	1	0	0	Borrow	0	1
District/ Khan Military Police Headquarter	1	0	2	0	3	0	0	0	225	1	0
District/ Khan Military Subregion	1	0	2	0	139	0	0	0	200	1	1
Environment Office	1	0	0	0	0	0	2	0	Borrow	0	0
Education Office	1	0	0	0	3	2	0	0	Borrow	0	0
Agriculture Office	0	0	1	0	0	0	0	0	Borrow	0	0
Social Affairs Office	0	0	0	0	0	0	1	0	Borrow	0	0
Lan Management Office	1	0	2	0	1	0	0	0	70	0	0

### 13.6 Properties and Equipment of District Administration

#### 13.6.1 Buildings

Description	Unit	Number	Remark
Office building type			
- Concrete	building	1	
- Wood	building	0	
- Mixed	building	0	
Total floor space	m2		
- Concrete	m2	280	
- Wood	m2	0	
- Mixed	m2	0	
Building condition			
- Concrete	%	80	
- Wood	%	0	
- Mixed	%	0	
Office reserved land area	m2	280	
Total office land area	m2	8,999	

#### 13.6.2 Means of Transport available at the District Administration

Description	Unit	Number	Remark
Vehicle (type, size and condition)	Vehicle	0	
Motorcycle (type, size and condition)	Motor	0	

**13.6.3 Equipment in District Offices**

Description	Unit	Number	Remark
Generator	per set	0	
Photocopy machine at the office	per set	0	
Private photocopy machine at the district town	place	0	
Telephone network (mobile line service)	network	4	097,016,012,011
Telephone network (land line service)	network	0	
Fax (include Fax number)	per set	0	
Computer	per set	1	
Printer	per set	1	
Scanner	Per set	0	
Number of computers those can access Internet and email services in the municipality/ district/khan office (including the technical line offices (please provide the email address)	set	0	
Typewriters (including the technical line offices)	per set	0	
Staff of Municipality/district/khan office can use computer	person	5	

**13.6.4 Equipment and facilities at the District Town**

Description	Unit	Number	Remark
Availability of electricity at noon	Nr Hours	12	
Private internet and email services in the municipality/ district/khan town.	place	0	

**13.7 Registered Revenue of the District Administration in 2008<sup>4</sup>**

Sources of Revenue	Revenue Collecting Agency	Estimated annual revenue (In Riels)
Shopping Store	District/ Khan Taxation Unit	10,800,000
Land (Tax, Certification and Tenure)	Provincial Department of Land Management	42,000,000
Lodging Tax (Guest House and Hotel)	Provincial Department of Tourism	72,000,000
Transportation Tax	Provincial Taxation Branch	6,425,000
Border Check-Point	Custom and Levy	16,111,500
Tax imposed on merchants	Department of Economy and Finance	2,000,000

<sup>4</sup> Please note that the data in this table are at best estimates. If the table appears blank it does not mean there is no revenue, just that the data have not been recorded/entered.

## 13.8 Services in the District

### 13.8.1 Public Sector Services

Type of Infrastructure/services	Unit	Number	
		Public	Private
Schools			
Pre-school	room		
Primary School	room	38	0
Secondary school	room	12	0
High School	room	3	0
University	room		
Health			
Health post	place		
Health center	place	2	0
Referral Hospital	bed		

## 13.9 Civil Society Organizations active in the District

### 13.9.1 NGOs, Associations, Programs and Projects

Name	Abbr.	Sector Activities	No. of Target Communes	No. of Target Villages	Office in District
Care	Care	ផ្សព្វផ្សាយសុខភាពបន្តពូជ និងសុខភាពផ្លូវភេទ	3	13	No
NA	NA	ផែនការអភិវឌ្ឍន៍ខេត្ត កម្មវិធីពង្រឹងតួនាទីថ្នាក់ស្រុក និងកម្មវិធីវិនិយោគ	0	0	No
LICADO	LICADO	ហ្វឹកហ្វឺន ផ្សព្វផ្សាយអំពីសិទ្ធិកុមារ ច្បាប់ ការជួញដូរមនុស្ស	3	13	No
MARISOTP	MARISTOP	អង្កេតលើយុវវ័យចាប់ពីអាយុ ១៥- ២៤ ឆ្នាំ ទាក់ទងជំងឺអេដស៍ ធ្វើតេស្តឈាម	3	13	No
RACHHA	RACHHA	អនុវត្តគម្រោងកំណត់សហគមន៍	0	0	No
NA	RAC	មូលនិធិសមធម៌សំរាប់ សុខភាពបន្តពូជ	3	13	No

### 13.9.2 Political Parties active in the Municipality, District and Khan

Name	Abbr.	Office in District
Cambodian People Party	CPP	Yes
FUNCINPEC Party	FUNCINPEC	Yes
SAM RAINSY Party	Sam Rainsy Party	Yes

### 13.10 Private Sector Organizations

#### 13.10.1 Registered Companies in 2008, by District

On private sector at commune and/or district level	KKG	Bothumsakor	kirisakor	Koh Kong	Khemarak phumen	Mondul sema	Sre Ambel	Thmabang
<b>Businesses and Companies</b>								
Number of registered agricultural enterprises (except family farms)	1	0	0	0	0	0	1	
Number of registered shops, restaurants, transporters and other services	540	29	10	52	121	168	108	25
Number of manufacturing companies	29	5	0	1	13	2	8	0
Number of registered forestry enterprises	16	0	0	0	6	2	8	0
Number of registered mining companies	7	0	0	0	0	3	4	0
Number of financial institutions	7	1	0	1	1	1	3	0
Number of other commercial institutions		0	0	0	0	0	0	0
Estimated number of informal enterprises (not registered)	664	146	41	16	47	20	359	35
<b>Employment</b>								
Number of people employed in 2008 by companies or any other enterprises	2,300						2,300	
<b>Investment</b>								
Amount invested in 2008 by private sector (\$)	n/a	n/a	n/a	n/a	n/a	n/a	n/a	n/a
<b>Markets</b>								
Number of markets, operating at least weekly	11	3	1	1	1	3	2	

**Note:** These data are not comprehensive as different companies and business are registered with different departments and not all departments were able or willing to provide detailed information. The number of informal enterprises reflects a rough estimate, made at provincial level and could not be verified.

**Source:** Unofficially collected at Provincial Level

#### 13.10.2 Farmers in 2008, by District

Credit	KKG	Bothumsakor	kirisakor	Koh Kong	Khemarak phumen	Mondul sema	Sre Ambel	Thmabang
Volume of credit provided to farmers in 2008 (\$)	27,489	n/a	n/a	13,384	0	14,105	n/a	n/a
Number of farmers receiving credit in 2008	52	n/a	n/a	34	0	18	n/a	n/a
Volume of credit provided to companies in 2008 (\$)	128,235	n/a	n/a	0	40,000	88,235	n/a	n/a

**Note:** Please note that these data are not necessarily complete or correct. The data are derived from government agencies at provincial and district level which used different recording systems, did not always have complete data or were, sometimes, less than willing to share their data.

**Source:** Unofficially collected at Provincial Level



## **SECTION E: POVERTY DATA**



## 14 Data on Poverty

### 14.1 Predicted Poverty Rates for 2009, by commune

The **Predicted Family Poverty Rate** is based on a statistical model (robust multilevel mixed effect regression) at village level developed by the NCDD M&E Unit and uses CDB data for making an estimate of the predicted poverty rate (this is: *the portion of total families in the district or commune who are expected to be poor*) for the following year using current year data.

The basis for this predicted poverty rate also uses IDPoor (a project of the Ministry of Planning with technical assistance provided by GTZ) data

Commune	2004	2009
Pak Khlang	27.20%	17.90%
Peam Krasaob	24.50%	26.40%
Tuol Kokir	35.80%	27.90%

### 14.2 Poverty data from survey

#### 14.2.1 Identification of Poor Households Program (IDPoor)

The Ministry of Planning IDPoor Program has developed standardized Procedures for Identification of Poor Households in rural areas. These Procedures are implemented using a participatory and consultative process by sub-national government structures and community representatives.

The IDPoor Program is managed by the Ministry of Planning (MOP), in cooperation with the Ministry of Interior's Department of Local Administration (DOLA). The program is supported by the Federal Republic of Germany, with technical assistance provided by German Technical Cooperation (GTZ). In 2009, AusAID also provided funding support to the Program.

#### Objective

The IDPoor Program aims to implement the Procedures for Identification of Poor Households in rural areas as widely as possible, in order to provide data on the level of poverty of areas and households that can be used by a large range of institutions and organizations for targeting services and development assistance to poor areas and poor households.

**Coverage:** During 2007, 2008 and 2009 the IDPoor Procedures have been implemented in 18 provinces (with partial or complete coverage), covering a total of around 7000 rural villages. The MOP and a number of NGO partners who are Health Equity Fund Operators have collaborated in collecting this data from different areas.

**Categorization:** Identified poor households are classified under two poverty categories: Poor Level 1 (very poor), and Poor Level 2 (poor). Households are classified based on data collected using a standard questionnaire, together with consideration by villagers of these households' special circumstances.

**Further information:** Please go to the IDPoor Program webpage at [www.mop.gov.kh/Projects/IDPoor/tabid/154/Default.aspx](http://www.mop.gov.kh/Projects/IDPoor/tabid/154/Default.aspx)

*This District has not yet been covered by IDPoor*

